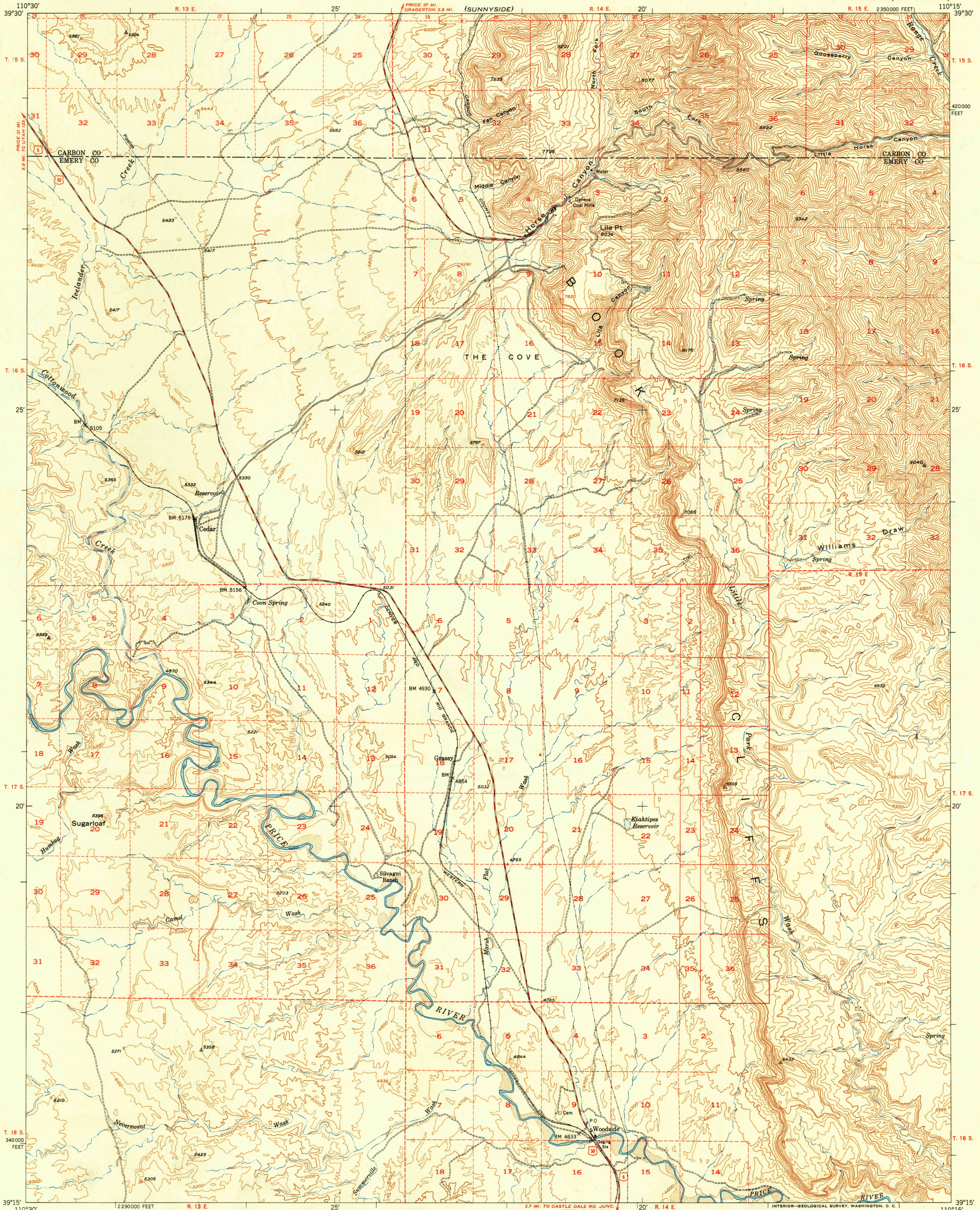


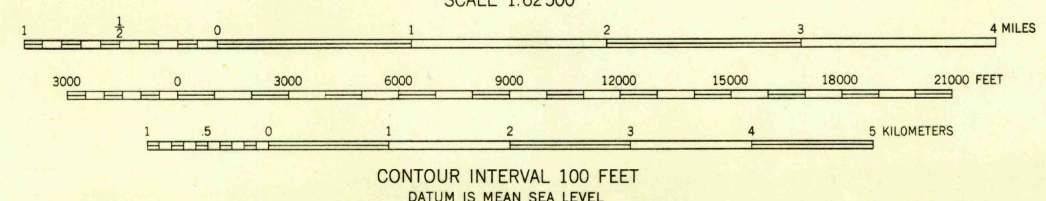
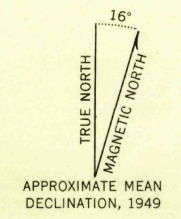
(WELLINGTON)

UNITED STATES
DEPARTMENT OF THE INTERIOR
GEOLOGICAL SURVEY

WOODSIDE QUADRANGLE
UTAH
15 MINUTE SERIES (TOPOGRAPHIC)



Mapped, edited, and published by the Geological Survey
Basic control by USGS and USC&GS
Supplemental control by plane-table and photo alidade
Planimetry by the Soil Conservation Service
Topography from aerial photographs by Mahan plotter methods
Aerial photographs taken 1938 and 1947. Field check 1949
Polyconic projection. 1927 North American datum
10,000-foot grid based on Utah coordinate system,
central zone
Unchecked elevations are shown in brown
Dashed land lines indicate approximate location



ROAD CLASSIFICATION

HARD-SURFACE ALL WEATHER ROADS	DRY WEATHER ROADS
Heavy-duty — 2 LANE LANE	Improved dirt —
Medium-duty — 2 LANE LANE	Unimproved dirt —
Loose-surface, graded, or narrow hard-surface —	
U. S. Route	State Route

WOODSIDE, UTAH
N3915-W11015/15
EDITION OF 1950

FOR SALE BY U. S. GEOLOGICAL SURVEY, FEDERAL CENTER, DENVER, COLORADO OR WASHINGTON 25, D. C.
A FOLDER DESCRIBING TOPOGRAPHIC MAPS AND SYMBOLS IS AVAILABLE ON REQUEST

USGS Library
Reston, VA.
Topo Archive