

TOPOGRAPHY  
RECONNAISSANCE

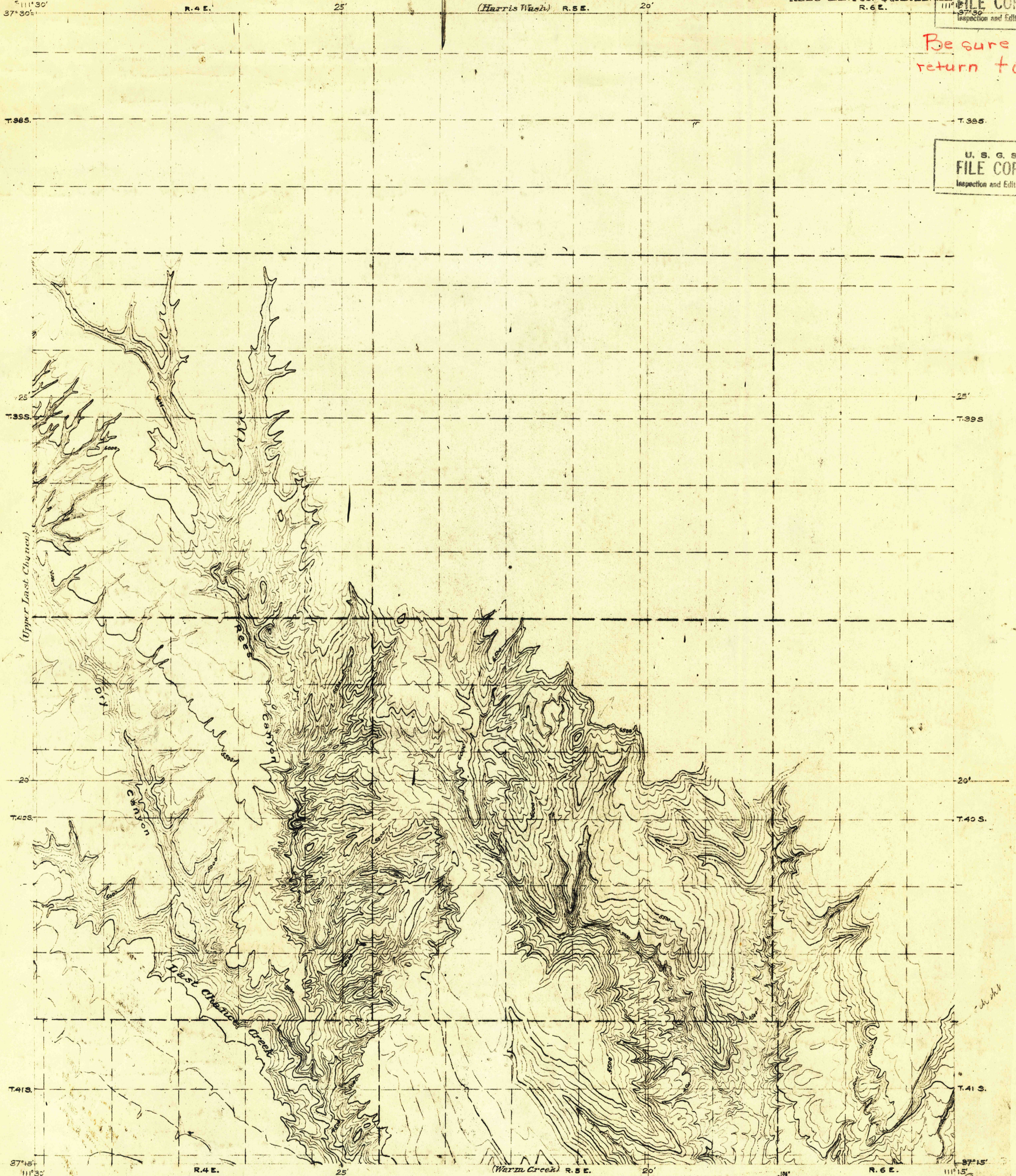
UTAH  
REES CANYON QUADRANGLE  
R. 6 E.

U. S. G. S.  
FILE COPY  
Inspection and Editing.

Be sure to  
return to

U. S. G. S.  
FILE COPY  
Inspection and Editing.

RETURN TO:  
USGS AND HISTORICAL MAP ARCHIVES



Alley Wash

Waterway

Topography by Raymond C. Moore  
A. C. Tester, N.W. Bass, Assistants  
Surveyed in 1922.

Scale 53388

Contour interval 100 feet.  
Datum is mean sea level.

TRUE NORTH  
MAGNETIC NORTH

USGS  
Historical File  
Topographic Division

Rees Canyon, Utah

RETURN TO:  
USGS AND HISTORICAL MAP ARCHIVES