

TOPOGRAPHY  
RECONNAISSANCE  
(Alvey Wash)

UTAH  
UPPER LAST CHANCE QUADRANGLE

U. S. G. S.  
FILE COPY  
Inspection and Editing.

Be sure to  
return to

U. S. G. S.  
FILE COPY  
Inspection and Editing.

RETURN TO:  
USGS AND HISTORICAL MAP ARCHIVES

Scale Chief  
111°45'  
37°34'

R. 2 E. 40

35' R. 3 E.

R. 4 E. 111°30'

T. 38 S.

T. 38 S.

26'

25'

T. 39 S.

T. 39 S.

20'

20'

T. 40 S.

T. 40 S.

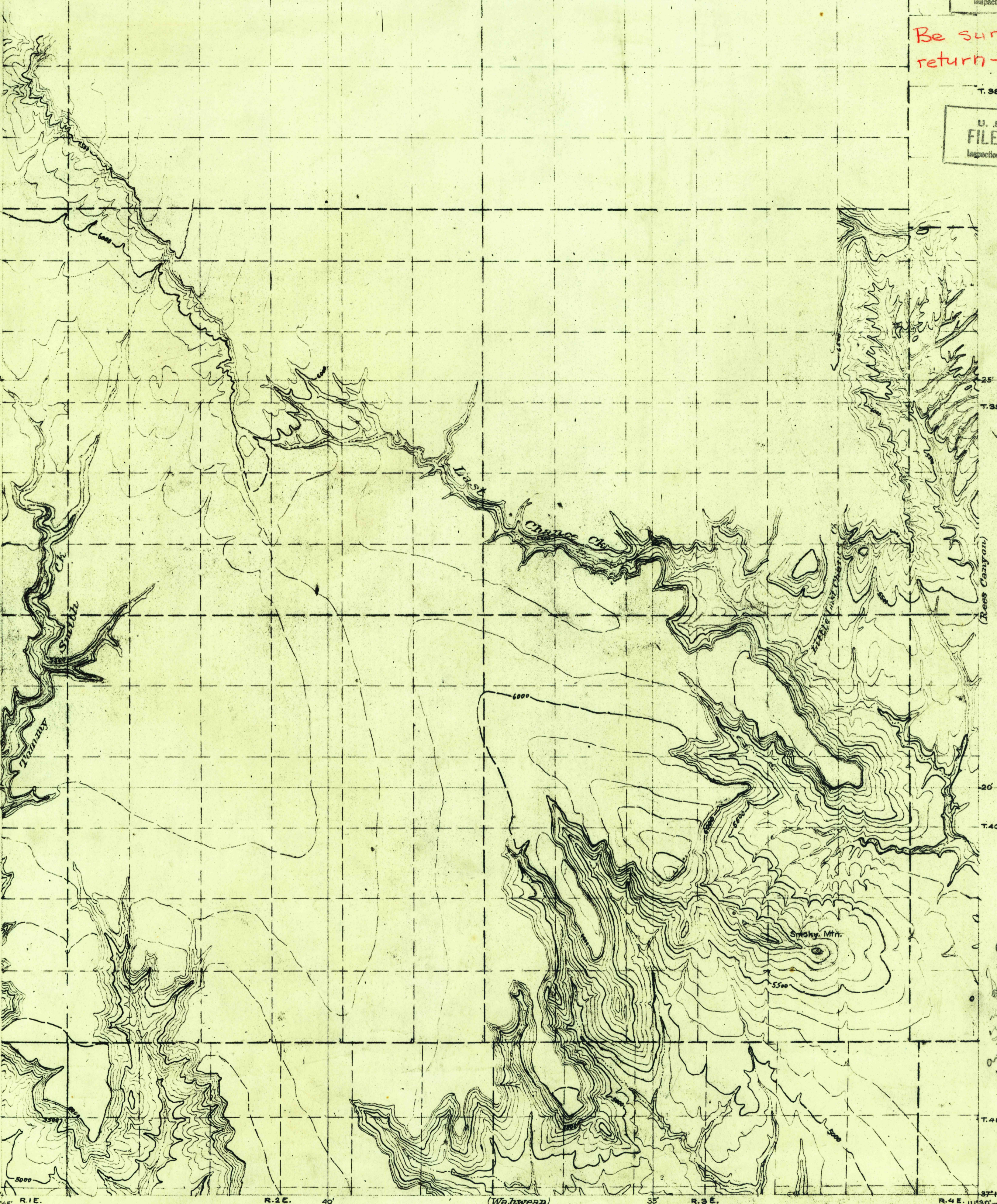
T. 41 S.

T. 41 S.

37°15'

R. 4 E. 111°30'

4/2-23  
Original tracing  
on which this map  
is based. Photo  
of original sheet  
on file in  
Lawrence R. Moore  
1922



Topography by Raymond C. Moore  
A. C. Tester and N. W. Bass, Assistants  
Surveyed in 1922

Scale 1:50,000  
Contour interval 100 feet  
Datum is mean sea level.

USGS  
Historical File  
Topographic Division

Upper Last Chance  
Utah.

RETURN TO:  
USGS AND HISTORICAL MAP ARCHIVES