

S.W. 1/4 of S.E. 1/4
Escalante, Utah, Quadrangle. **K-36**
Be sure to return to

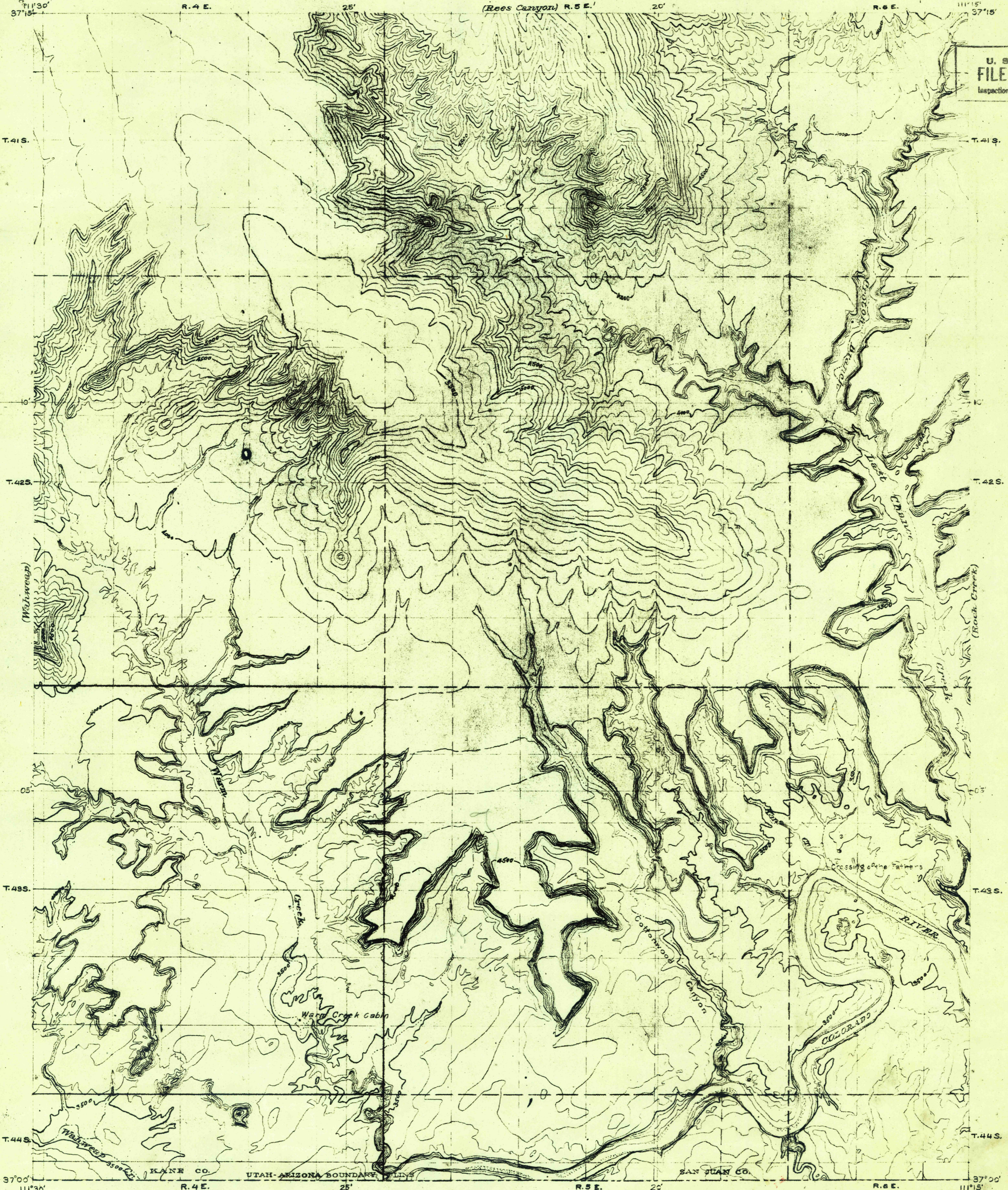
TOPOGRAPHY
RECONNAISSANCE

UTAH
WARM CREEK QUADRANGLE

U. S. G. S.
FILE COPY
Inspection and Editing.

RETURN TO:
USGS AND HISTORICAL MAP ARCHIVES

RETURN TO:
USGS AND HISTORICAL MAP ARCHIVES



Topography by Raymond C. Moore and A. T. Fowler.
Surveyed in 1921-1922
A. C. Teeter, and N. W. Bass, Ass'ts.

Moore
Fowler
(below 3500')

Scale 1:53,750
Contour interval 100 feet.
Datum is mean sea level.

USGS
Historical File
Topographic Division

Warm Creek,
Utah.