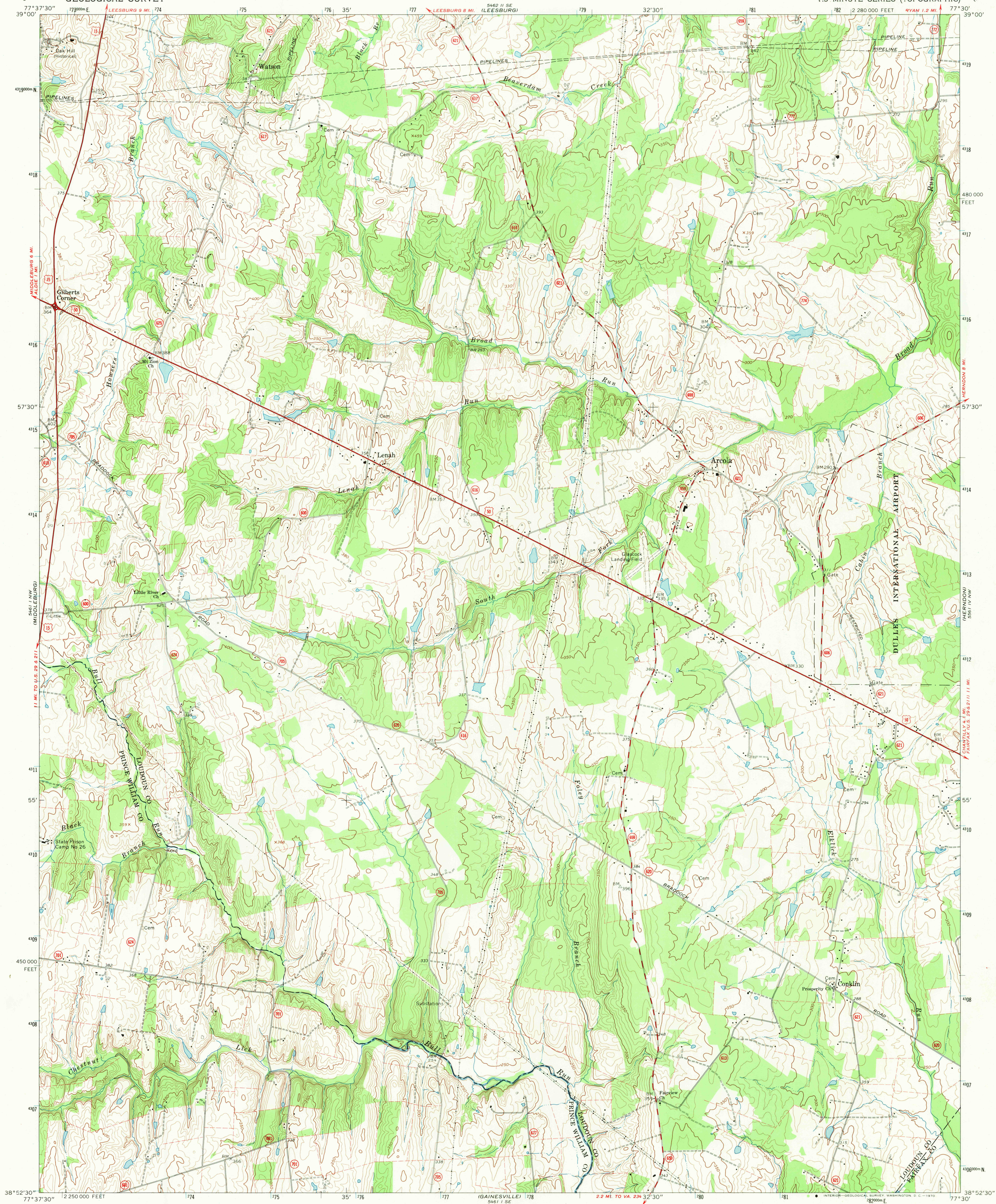


UNITED STATES
DEPARTMENT OF THE INTERIOR
GEOLOGICAL SURVEY

ARCOLA QUADRANGLE
VIRGINIA
7.5 MINUTE SERIES (TOPOGRAPHIC)

USGS Library
Reston, VA
Topo Archive



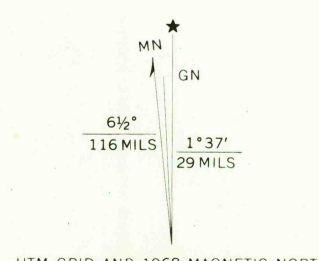
Mapped, edited, and published by the Geological Survey

Control by USGS, USC&GS, and USCE

Topography by photogrammetric methods from aerial photographs taken 1963 and 1964. Field checked 1968. Supersedes Army Map Service map dated 1943.

Polycyclic projection. 1927 North American datum. 10,000-foot grid based on Virginia coordinate system, north zone. 1000-meter Universal Transverse Mercator grid ticks, zone 18, shown in blue.

Fine red dashed lines indicate selected fence and field lines where generally visible on aerial photographs. This information is unchecked.



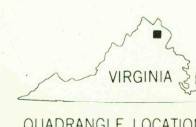
SCALE 1:24,000

CONTOUR INTERVAL 10 FEET

DATUM IS MEAN SEA LEVEL

UTM GRID AND 1968 MAGNETIC NORTH DECLINATION AT CENTER OF SHEET

USGS
Historical File
Topographic Division



ROAD CLASSIFICATION
Primary highway, all weather, hard surface
Secondary highway, all weather, hard surface
Light-duty road, all weather, improved surface
Unimproved road, fair or dry weather
U. S. Route
State Route

U.S.G.S.
FILE COPY
TOPOGRAPHIC DIVISION

ARCOLA, VA.
N 3852.5 - W 7730.7.5

1968

AMS 5461 I NE-SERIES V834

THIS MAP COMPLIES WITH NATIONAL MAP ACCURACY STANDARDS
FOR SALE BY U.S. GEOLOGICAL SURVEY, WASHINGTON, D.C. 20242
AND VIRGINIA DIVISION OF MINERAL RESOURCES, CHARLOTTESVILLE, VIRGINIA 22903
A FOLDER DESCRIBING TOPOGRAPHIC MAPS AND SYMBOLS IS AVAILABLE ON REQUEST

JUL 2 1970