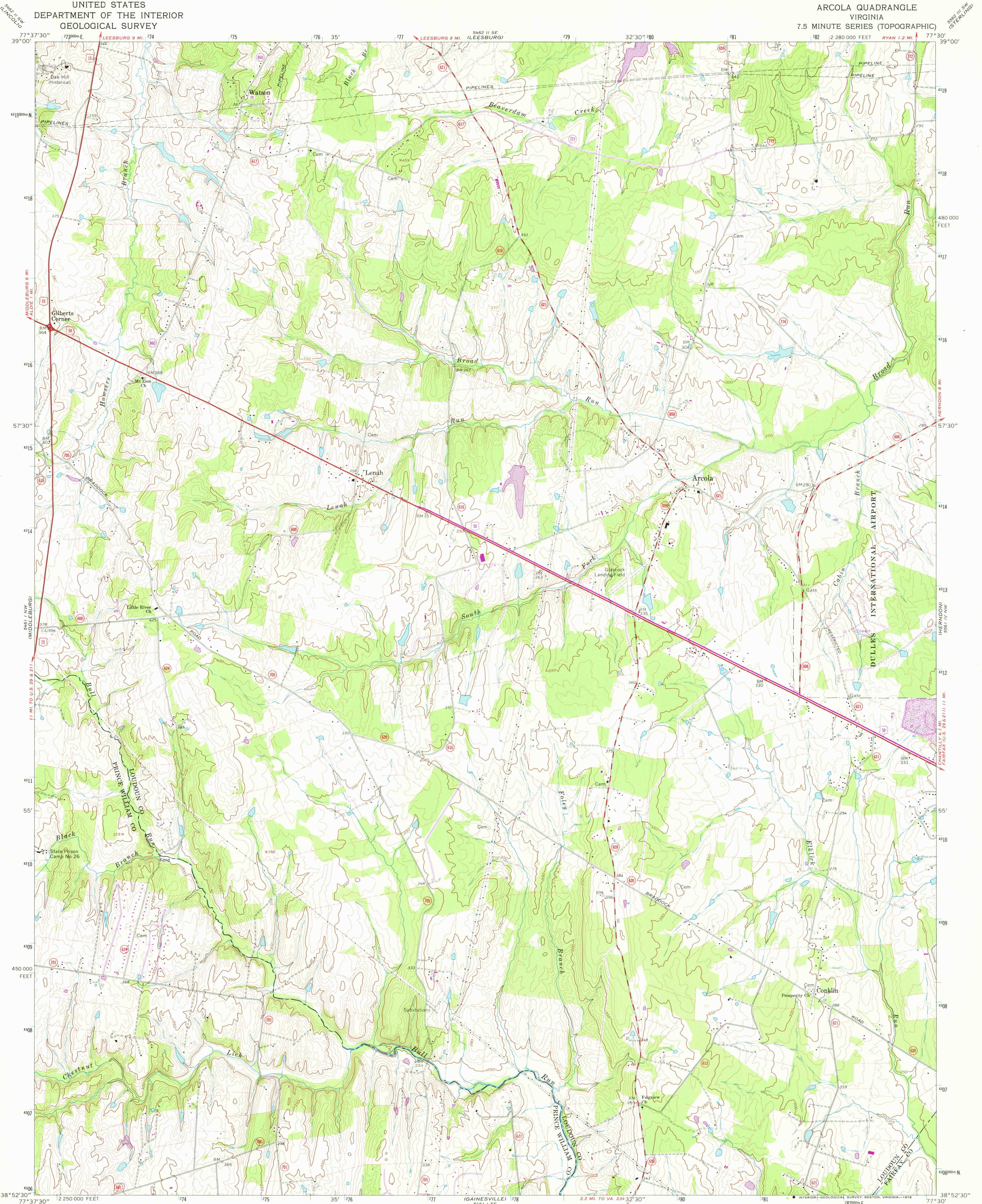


UNITED STATES
DEPARTMENT OF THE INTERIOR
GEOLOGICAL SURVEY

ARCOLA QUADRANGLE
VIRGINIA
7.5 MINUTE SERIES (TOPOGRAPHIC)



Mapped, edited, and published by the Geological Survey

Control by USGS, USC&GS, and USCE

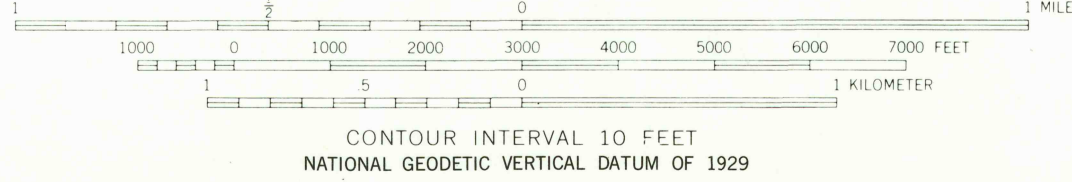
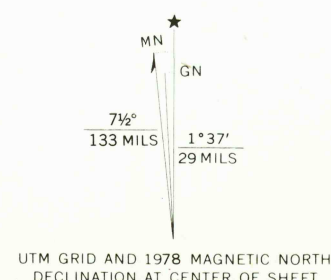
Topography by photogrammetric methods from aerial
photographs taken 1963 and 1964. This information is unchecked
Supersedes Army Map Service map dated 1943

Polyconic projection. 1927 North American datum
10,000-foot grid based on Virginia coordinate system, north zone
1000-meter Universal Transverse Mercator grid ticks,
zone 18, shown in blue

Fine red dashed lines indicate selected fence and field lines where
generally visible on aerial photographs. This information is unchecked

There may be private inholdings within the boundaries of
the National or State Reservations shown on this map

Revisions shown in purple compiled in cooperation with Commonwealth
of Virginia agencies from aerial photographs taken 1977 and other
source data. This information not field checked. Map edited 1978



THIS MAP COMPLIES WITH NATIONAL MAP ACCURACY STANDARDS
FOR SALE BY U.S. GEOLOGICAL SURVEY, RESTON, VIRGINIA 22092
AND VIRGINIA DIVISION OF MINERAL RESOURCES, CHARLOTTESVILLE, VIRGINIA 22903
A FOLDER DESCRIBING TOPOGRAPHIC MAPS AND SYMBOLS IS AVAILABLE ON REQUEST

Boundary lines shown in purple compiled from latest
information available from the controlling authority

ROAD CLASSIFICATION
Primary highway, all weather, hard surface
Secondary highway, all weather, hard surface
Light-duty road, all weather, improved surface
Unimproved road, fair or dry weather
U.S. Route
State Route

USGS
Historical File
Topographic Division

ARCOLA, VA.
N3852.5—W7730/7.5

1968
PHOTOREVISED 1978
AMS 5461 I NE—SERIES V834

MAR 15 1978

2850