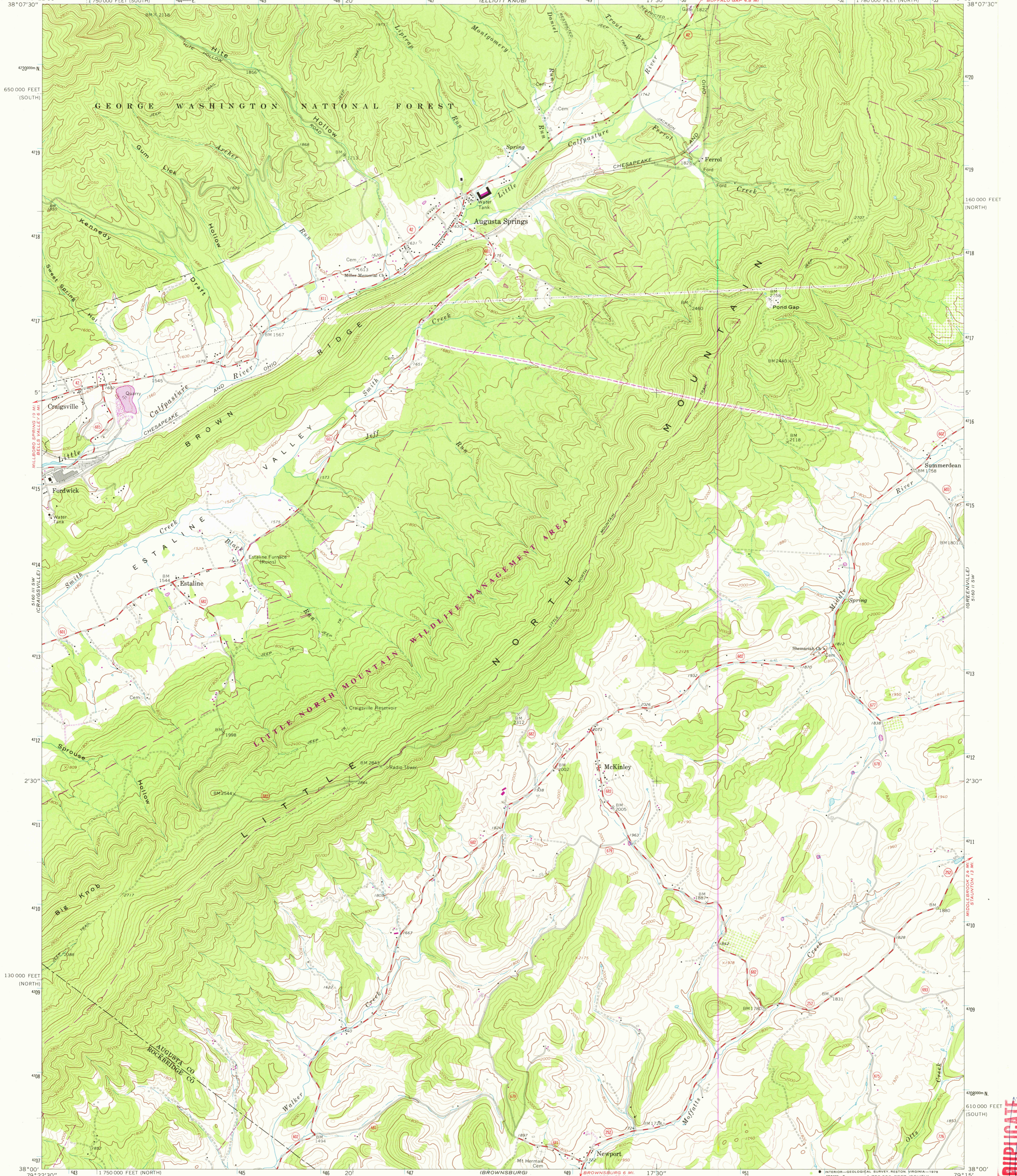
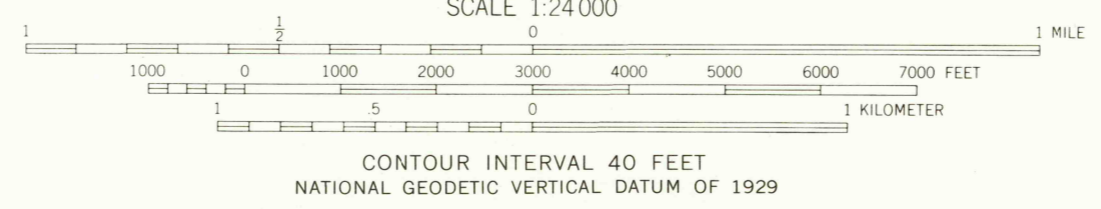
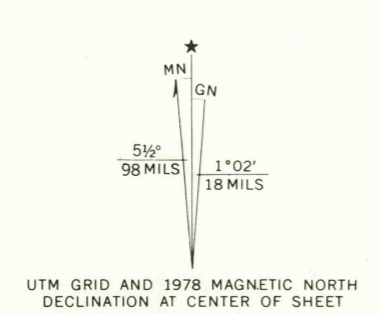


79° 22' 30" 1 1750 000 FEET (SOUTH) 4440000 E 445 446 20' 447 448 449 17' 30" 150 151 152 153 154 155 179° 15' 38' 07' 30"



Mapped, edited, and published by the Geological Survey
Control by USGS and USC&GS
Topography by photogrammetric methods from aerial photographs taken 1964. Field checked 1967
Polyconic projection. 1927 North American datum
10,000-foot grids based on Virginia coordinate system, north and south zones
1000-meter Universal Transverse Mercator grid ticks, zone 17, shown in blue
Fine red dashed lines indicate selected fence and field lines where generally visible on aerial photographs. This information is uncheckered
There may be private inholdings within the boundaries of the National or State reservations shown on this map
Revisions shown in purple compiled in cooperation with Commonwealth of Virginia agencies from aerial photographs taken 1977 and other source data. This information not field checked. Map edited 1978



THIS MAP COMPLIES WITH NATIONAL MAP ACCURACY STANDARDS
FOR SALE BY U. S. GEOLOGICAL SURVEY, RESTON, VIRGINIA 22092
AND VIRGINIA DIVISION OF MINERAL RESOURCES, CHARLOTTESVILLE, VIRGINIA 22903
A FOLDER DESCRIBING TOPOGRAPHIC MAPS AND SYMBOLS IS AVAILABLE ON REQUEST



USGS
Historical File
Topographic Division
AUGUSTA SPRINGS, VA.
N3800—W7915/7.5
1967
PHOTOREVISED 1978
AMS 5160 III SE—SERIES V834
MAR 16 1979

DUPLICATE