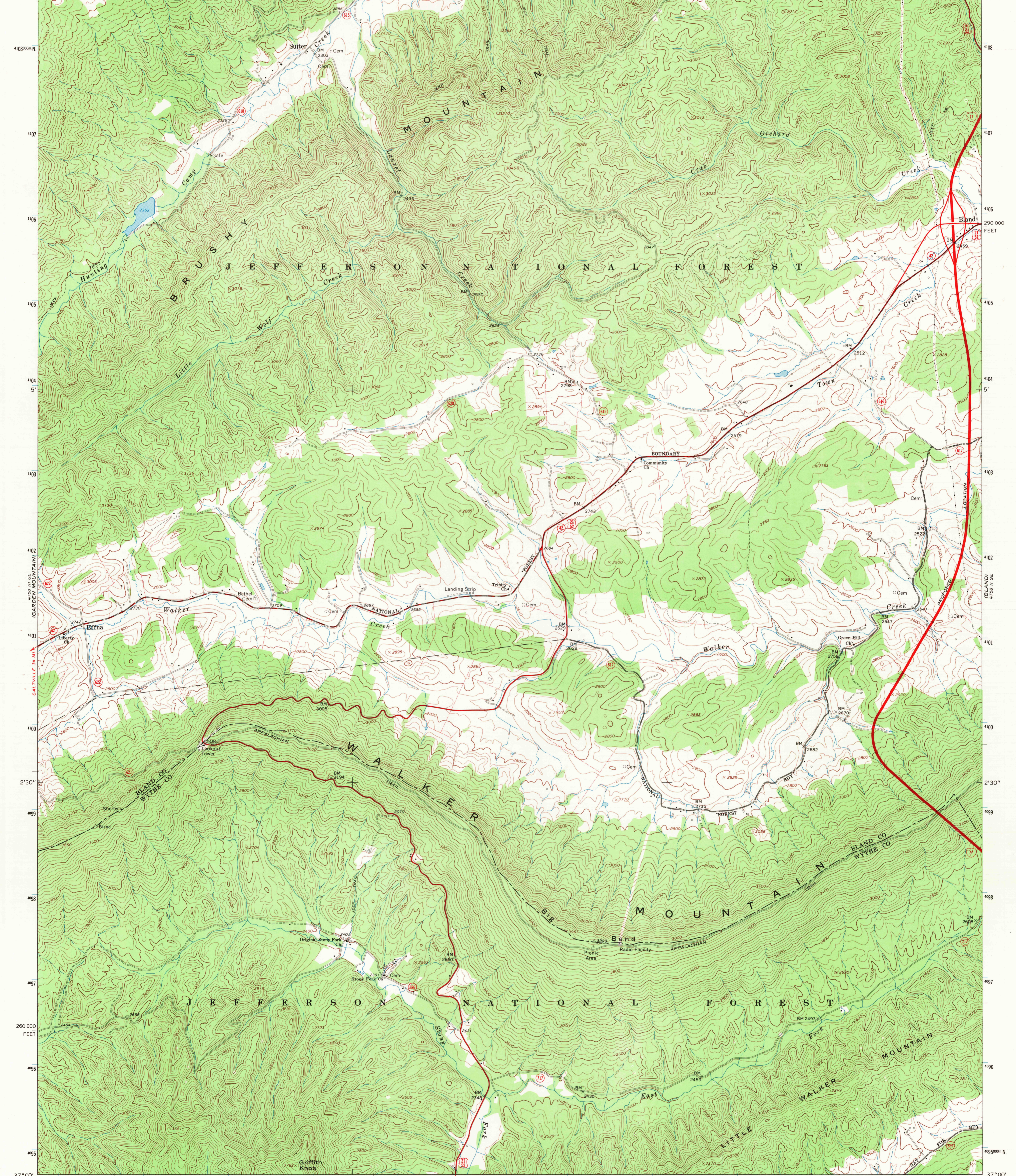
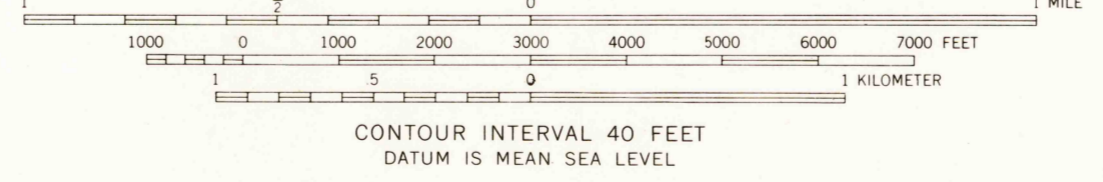
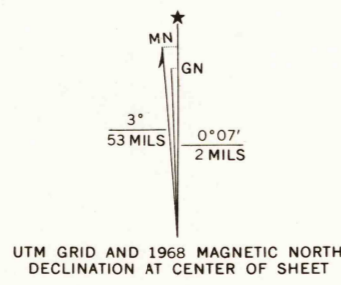


37°07'30" 81°15' 478 1 200 000 FEET 479 12'30" 480 4758 11 NW (BASTIAN) 484 10' 485 1230000 FEET 486 81°07'30" 37°07'30"



Mapped, edited, and published by the Geological Survey
Control by USGS and USC&GS
Topography by photogrammetric methods from aerial
photographs taken 1967. Field checked 1968
Polyconic projection. 1927 North American datum
10,000-foot grid based on Virginia coordinate system,
south zone
1000-meter Universal Transverse Mercator grid ticks,
zone 17, shown in blue
Fine red dashed lines indicate selected fence and field lines where
generally visible on aerial photographs. This information is unchecked



USGS
Historical File
Topographic Division

ROAD CLASSIFICATION

Primary highway, all weather, hard surface	Light-duty road, all weather, improved surface
Secondary highway, all weather, hard surface	Unimproved road, fair or dry weather

○ Interstate Route □ U. S. Route ○ State Route

U.S.G.S.
FILE COPY
TOPOGRAPHIC DIVISION

BIG BEND, VA.
SW/4 BLAND 15 QUADRANGLE
N3700-W8107.5/7.5

1968
AMS 4758 II SW-SERIES W834

THIS MAP COMPLIES WITH NATIONAL MAP ACCURACY STANDARDS
FOR SALE BY U.S. GEOLOGICAL SURVEY, WASHINGTON, D. C. 20242
AND VIRGINIA DIVISION OF MINERAL RESOURCES, CHARLOTTESVILLE, VIRGINIA 22903
A FOLDER DESCRIBING TOPOGRAPHIC MAPS AND SYMBOLS IS AVAILABLE ON REQUEST