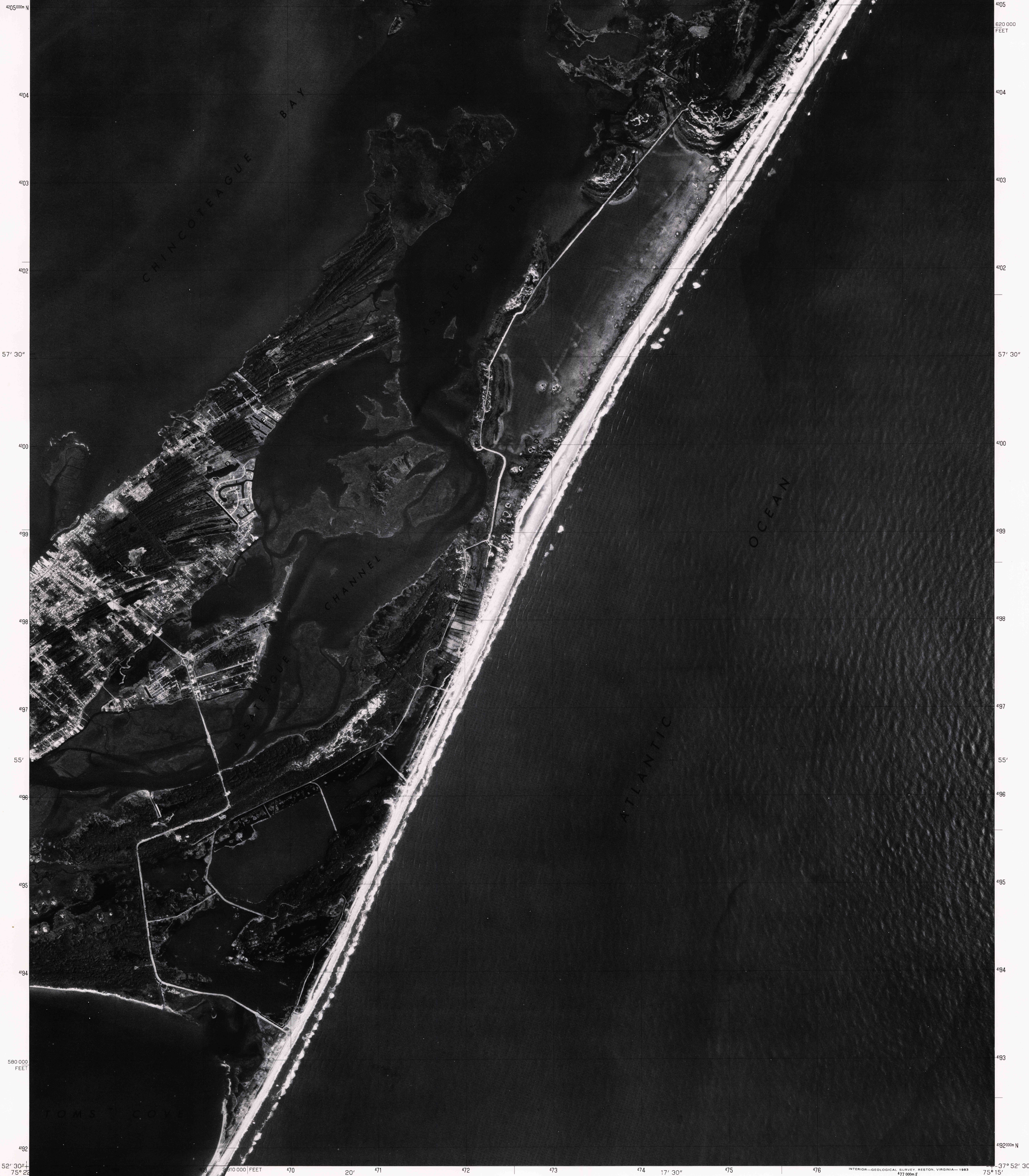
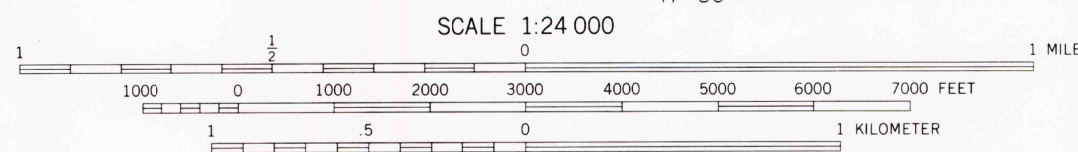
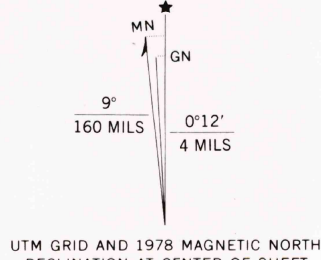


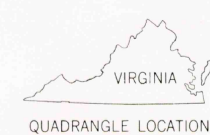
75° 22' 30" 468 20' 471 472 473 474 17' 30" 475 2 830 000 FEET 477 75° 15' 38° 00'



Produced and published by the Geological Survey
in cooperation with the Soil Conservation Service
Orthophotograph prepared from 1:80,000-scale
aerial photograph taken April 29, 1978
Projection and 10,000-foot grid ticks: Virginia
coordinate system, south zone (Lambert conformal conic)
1000-meter Universal Transverse Mercator grid,
zone 18, 1927 North American Datum
To place on the predicted North American Datum 1983
move the projection lines 8 meters south and
31 meters west as shown by dashed corner ticks
Photom imagery rectified by simple projection



PRINCIPAL NUMBERED HIGHWAYS
Interstate Route U. S. Route State Route



CHINCOTEAGUE EAST, VA.
37075-H3-OQ-024

1978

DMA 5959 IV NE-SERIES V034

THIS MAP COMPLIES WITH NATIONAL MAP ACCURACY STANDARDS
FOR SALE BY U. S. GEOLOGICAL SURVEY, RESTON, VIRGINIA 22092
AND VIRGINIA DIVISION OF MINERAL RESOURCES, CHARLOTTESVILLE, VIRGINIA 22903