

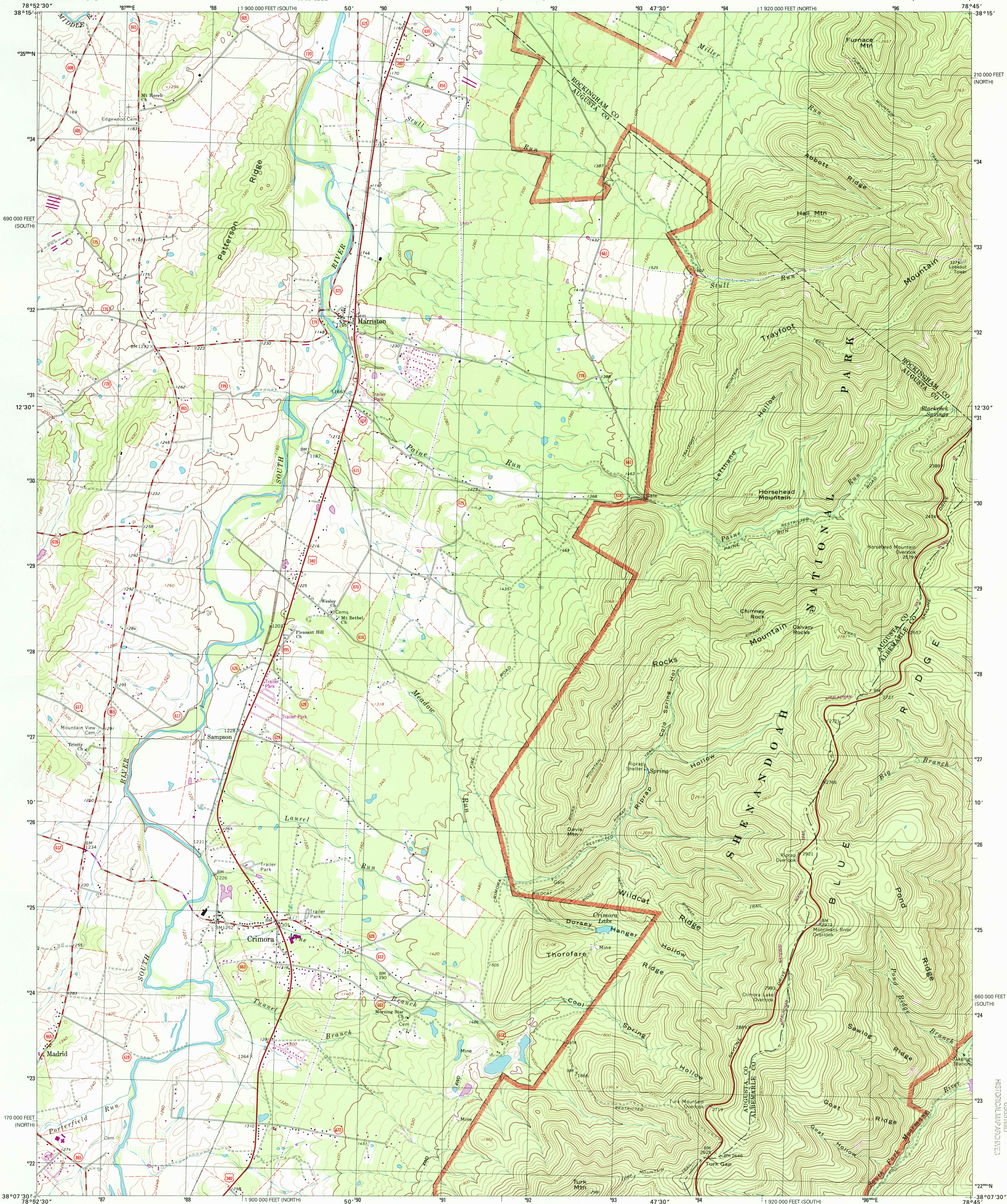


U.S. DEPARTMENT OF THE INTERIOR
U.S. GEOLOGICAL SURVEY

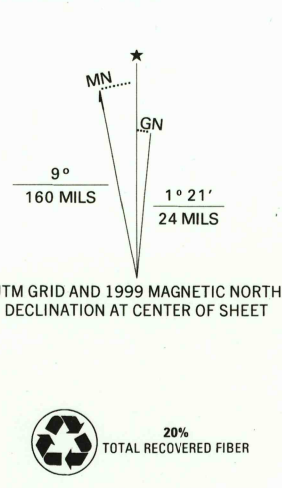


COMMONWEALTH OF VIRGINIA
DEPARTMENT OF TRANSPORTATION
DEPARTMENT OF MINES, MINERALS, AND ENERGY

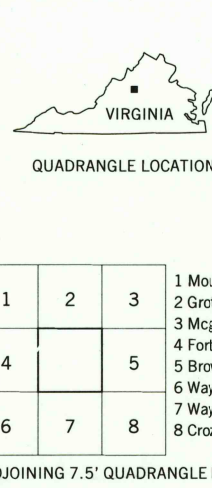
CRIMORA QUADRANGLE
VIRGINIA
7.5-MINUTE SERIES (TOPOGRAPHIC)



Produced by the United States Geological Survey
Topography compiled 1963. Planimetry derived from imagery taken 1984 and other sources. Photospectroscopy using imagery dated 1997; no major culture or drainage changes observed. Survey control current as of 1965. Boundaries revised 1999.
North American Datum of 1927 (NAD 27).
Projection: Virginia coordinate system, south zone (Lambert conformal conic).
10 000-foot ticks: Virginia coordinate system, north and south zones.
1000-meter Universal Transverse Mercator grid, zone 17.
North American Datum of 1983 (NAD 83) is shown by dashed corner ticks. The values of the shift between NAD 27 and NAD 83 for 7.5-minute intersections are obtainable from National Geodetic Survey NADCON software.
There may be private inholdings within the boundaries of the National or State reservations shown on this map.
Information shown in purple may not meet USGS content standards and may conflict with previously mapped contours.



SCALE 1:24 000
CONTOUR INTERVAL 40 FEET
SUPPLEMENTARY CONTOUR INTERVAL 20 FEET
NATIONAL GEODETIC VERTICAL DATUM OF 1929
TO CONVERT FROM FEET TO METERS, MULTIPLY BY 0.3048
THIS MAP COMPLIES WITH NATIONAL MAP ACCURACY STANDARDS
FOR SALE BY U.S. GEOLOGICAL SURVEY, P.O. BOX 25286, DENVER, COLORADO 80225
AND VIRGINIA DIVISION OF MINERAL RESOURCES, CHARLOTTESVILLE, VIRGINIA 22903
A FOLDER DESCRIBING TOPOGRAPHIC MAPS AND SYMBOLS IS AVAILABLE ON REQUEST



ROAD CLASSIFICATION
Primary highway
hard surface
Secondary highway
hard surface
Light-duty road, hard or
improved surface
Unimproved road
Interstate Route
U.S. Route
State Route

1	2	3
4	5	6
7	8	9

CRIMORA, VA
1997
NIMA 5260 III NE-SERIES V834

RECEIVED
NOV 3 0 1999
USGS M&D
HISTORICAL MAP ARCHIVES
1220207090876
0-130207-009-0-NB11