

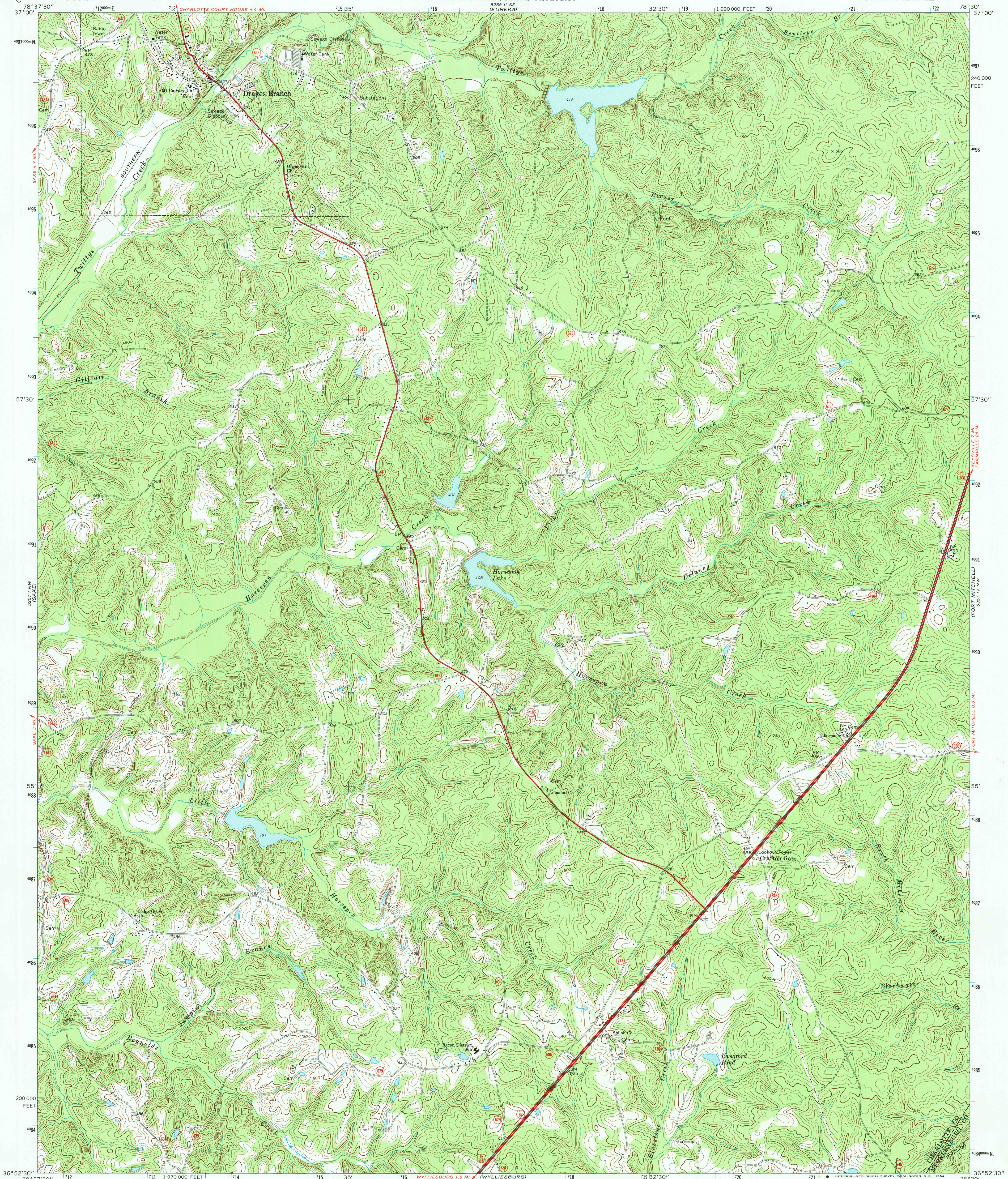
55° 51' 30" N  
78° 37' 30" W  
CLOVER 15  
CHARLOTTE COURTHOUSE

UNITED STATES  
DEPARTMENT OF THE INTERIOR  
GEOLOGICAL SURVEY

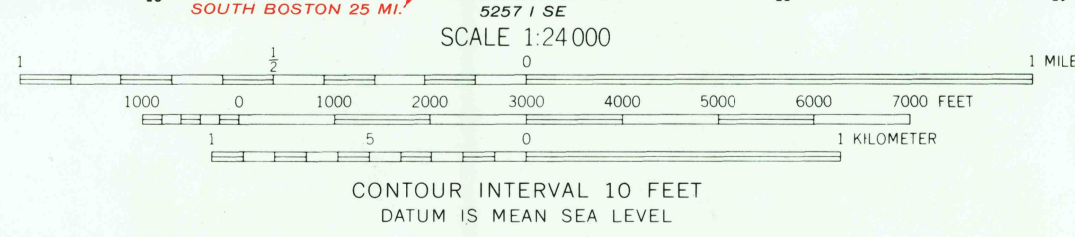
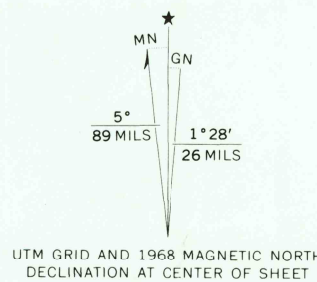
COMMONWEALTH OF VIRGINIA  
DIVISION OF MINERAL RESOURCES  
JAMES L. CALVER, STATE GEOLOGIST

DRAKES BRANCH QUADRANGLE  
VIRGINIA  
7.5 MINUTE SERIES (TOPOGRAPHIC)  
NE/4 CLOVER 15' QUADRANGLE

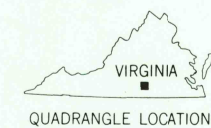
55° 51' 30" N  
78° 37' 30" W  
KEYSVILLE 15  
KEYSVILLE



Mapped, edited, and published by the Geological Survey  
Control by USGS and USC&GS  
Topography by photogrammetric methods from aerial  
photographs taken 1967. Field checked 1968  
Polyconic projection. 1927 North American datum  
10,000-foot grid based on Virginia coordinate system, south zone  
1000-meter Universal Transverse Mercator grid ticks,  
zone 17, shown in blue  
Fine red dashed lines indicate selected fence and field lines where  
generally visible on aerial photographs. This information is unchecked  
Map photoinspected 1979  
No major culture or drainage changes observed



THIS MAP COMPLIES WITH NATIONAL MAP ACCURACY STANDARDS  
FOR SALE BY U. S. GEOLOGICAL SURVEY, WASHINGTON, D. C. 20242  
AND VIRGINIA DIVISION OF MINERAL RESOURCES, CHARLOTTESVILLE, VIRGINIA 22903  
A FOLDER DESCRIBING TOPOGRAPHIC MAPS AND SYMBOLS IS AVAILABLE ON REQUEST



ROAD CLASSIFICATION  
Primary highway, all weather, hard surface  
Light-duty road, all weather, improved surface  
Unimproved road, fair or dry weather  
U. S. Route  
State Route

DRAKES BRANCH, VA.  
NE/4 CLOVER 15' QUADRANGLE  
N3652.5—W7830/7.5  
PHOTOINSPECTED 1979  
1968

AMS 5257 1 NE—SERIES V834

RETURN TO:  
USGS NED HISTORICAL MAP ARCHIVES