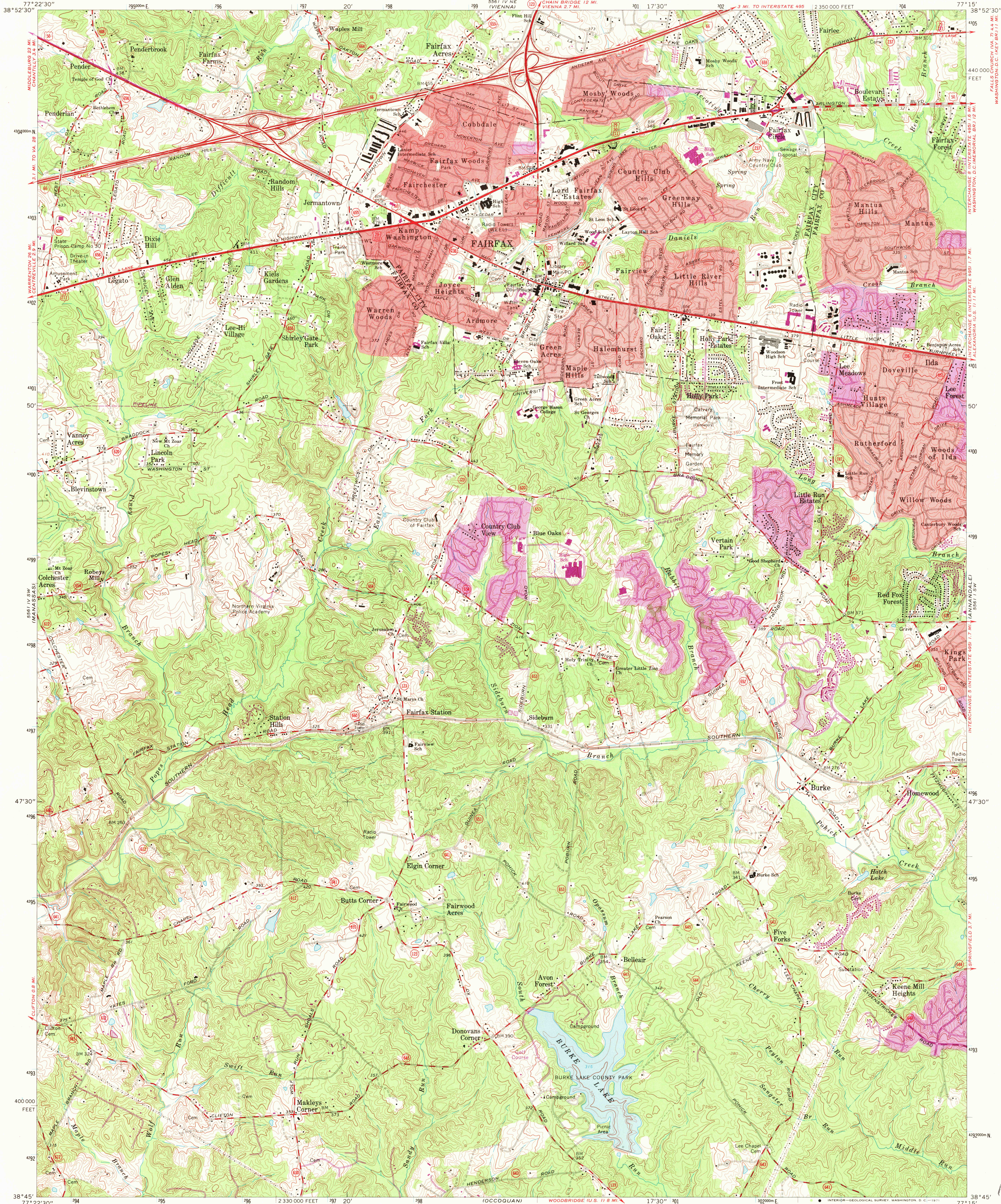


UNITED STATES  
DEPARTMENT OF THE INTERIOR  
GEOLOGICAL SURVEY

FAIRFAX QUADRANGLE  
VIRGINIA  
7.5 MINUTE SERIES (TOPOGRAPHIC)



Mapped, edited, and published by the Geological Survey

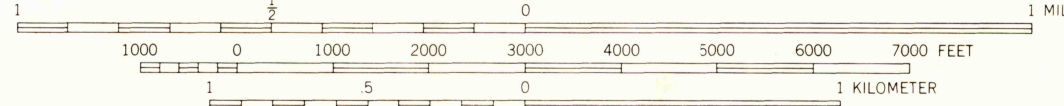
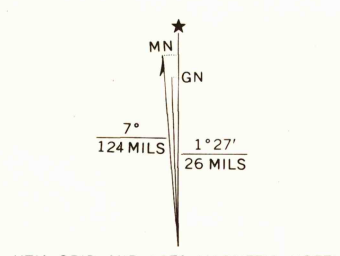
Control by USGS, USC&GS, and USCE

Topography by photogrammetric methods from aerial photographs taken 1949. Field checked 1951. Revised from aerial photographs taken 1963. Field checked 1966

Polycyclic projection. 1927 North American datum  
10,000-foot grid based on Virginia coordinate system, north zone  
1000-meter Universal Transverse Mercator grid ticks, zone 18, shown in blue

Fine red dashed lines indicate selected fence and field lines where generally visible on aerial photographs. This information is unchecked

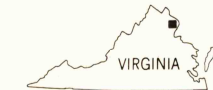
Red tint indicates areas in which only landmark buildings are shown



CONTOUR INTERVAL 10 FEET  
DATUM IS MEAN SEA LEVEL

THIS MAP COMPLIES WITH NATIONAL MAP ACCURACY STANDARDS  
FOR SALE BY U.S. GEOLOGICAL SURVEY, WASHINGTON, D.C. 20242  
AND VIRGINIA DIVISION OF MINERAL RESOURCES, CHARLOTTESVILLE, VIRGINIA 22903  
A FOLDER DESCRIBING TOPOGRAPHIC MAPS AND SYMBOLS IS AVAILABLE ON REQUEST

ROAD CLASSIFICATION  
Heavy-duty ——— Light-duty ———  
Medium-duty ——— Unimproved dirt ———  
Interstate Route ——— U.S. Route ——— State Route ———



USGS  
HISTORICAL FILE  
TOPOGRAPHIC DIVISION

FAIRFAX, VA.  
N3845—W7715/7.5

1966  
PHOTOREVISED 1971  
AMS 5561 IV SE—SERIES V834

10685

OCT 1 1971