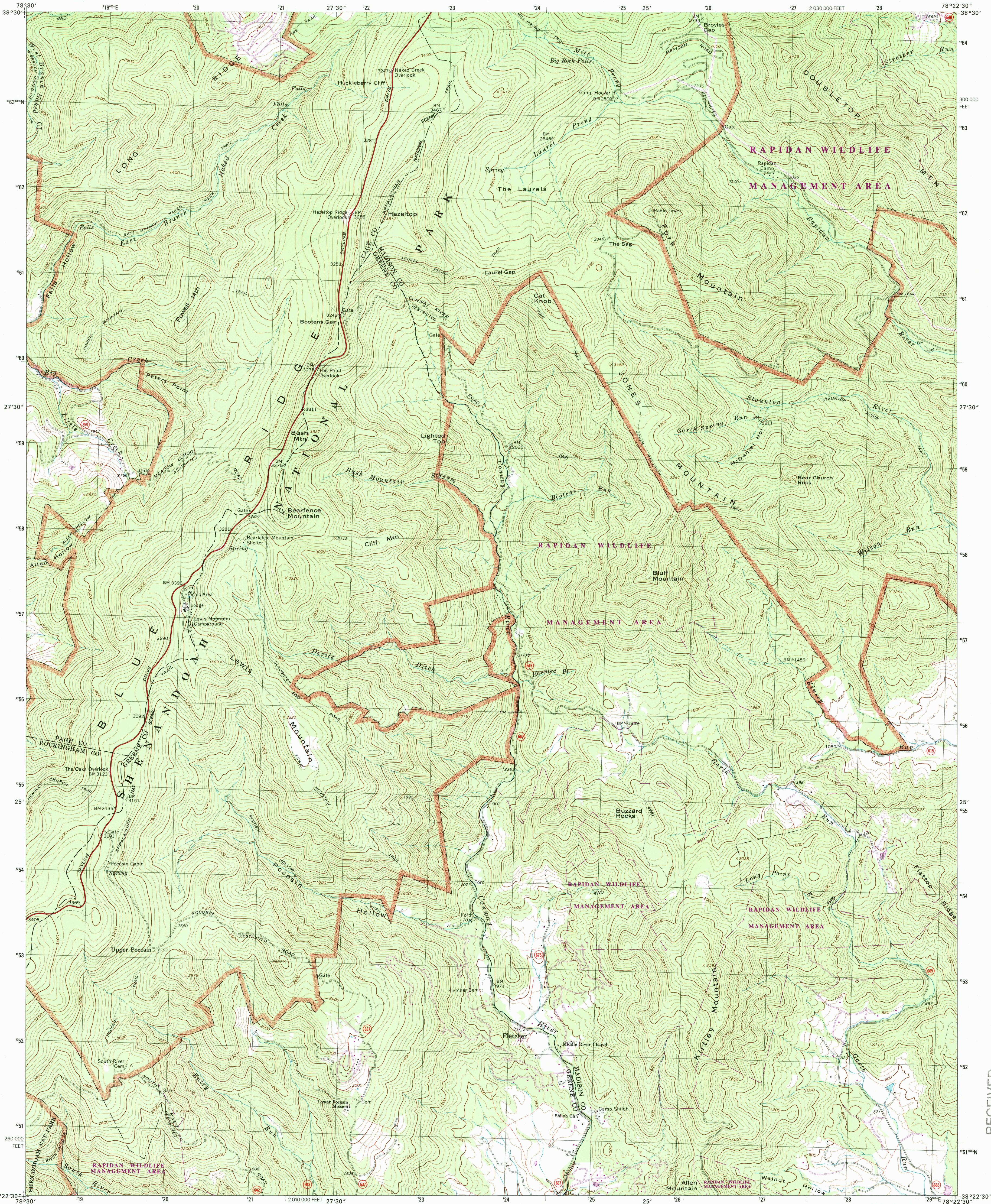




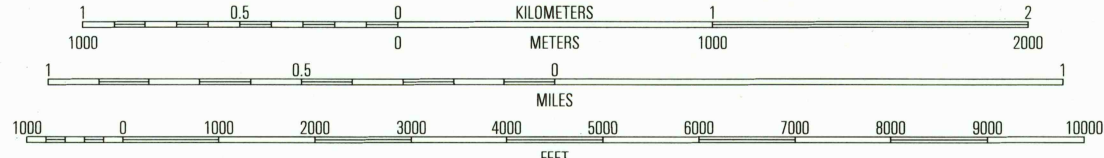
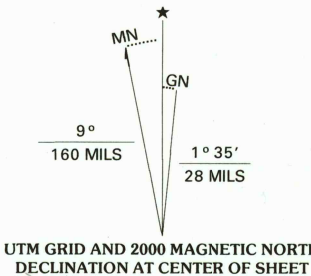
U.S. DEPARTMENT OF THE INTERIOR
U.S. GEOLOGICAL SURVEY

COMMONWEALTH OF VIRGINIA
DEPARTMENT OF TRANSPORTATION
DEPARTMENT OF MINES, MINERALS, AND ENERGY

FLETCHER QUADRANGLE
VIRGINIA
7.5-MINUTE SERIES (TOPOGRAPHIC)



Produced by the United States Geological Survey
Topography compiled 1963. Planimetry derived from imagery taken 1977 and other sources. Photoinspected using imagery dated 1999; no major culture or drainage changes observed. Survey control current as of 1965. Boundaries revised 2000
North American Datum of 1927 (NAD 27). Projection and 10 000-foot ticks: Virginia coordinate system, north zone (Lambert conformal conic)
1000-meter Universal Transverse Mercator grid, zone 17
North American Datum of 1983 (NAD 83) is shown by dashed corner ticks. The values of the shift between NAD 27 and NAD 83 for 7.5-minute intersections are obtainable from National Geodetic Survey NADCON software
There may be private inholdings within the boundaries of the National or State reservations shown on this map
Information shown in purple may not meet USGS content standards and may conflict with previously mapped contours



CONTOUR INTERVAL 40 FEET
NATIONAL GEODETIC VERTICAL DATUM OF 1929
TO CONVERT FROM FEET TO METERS, MULTIPLY BY 0.3048

THIS MAP COMPLIES WITH NATIONAL MAP ACCURACY STANDARDS
FOR SALE BY U.S. GEOLOGICAL SURVEY, P.O. BOX 25286, DENVER, COLORADO 80225
AND VIRGINIA DIVISION OF MINERAL RESOURCES, CHARLOTTESVILLE, VIRGINIA 22903
A FOLDER DESCRIBING TOPOGRAPHIC MAPS AND SYMBOLS IS AVAILABLE ON REQUEST



QUADRANGLE LOCATION

1	2	3	1 Stanley
			2 Big Meadows
			3 Old Rag Mountain
4		5	4 Elkton East
			5 Milltown
			6 Swift Run Gap
6	7	8	7 Stanardsville
			8 Rochelle

ADJOINING 7.5' QUADRANGLE NAMES

ROAD CLASSIFICATION
Primary highway
hard surface
Secondary highway
hard surface
Light-duty road, hard or
improved surface
Unimproved road
Interstate Route
U.S. Route
State Route

FLETCHER, VA
1999

NIMA 5360 IV NW-SERIES V834

RECEIVED
AUG 31 2000

USGS and
HISTORICAL MAP ARCHIVES

