

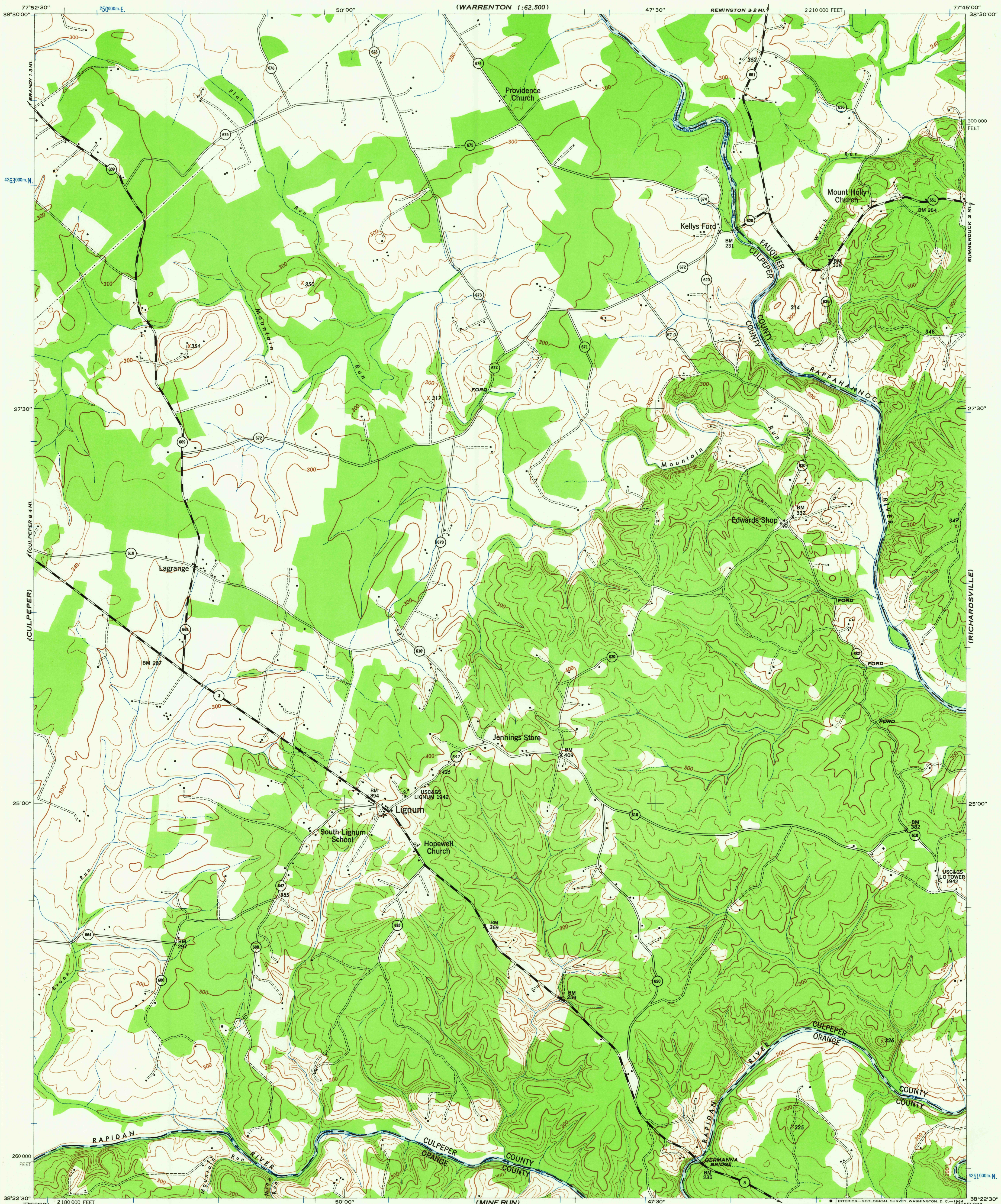
(WARRENTON 1:62,500)

VIRGINIA

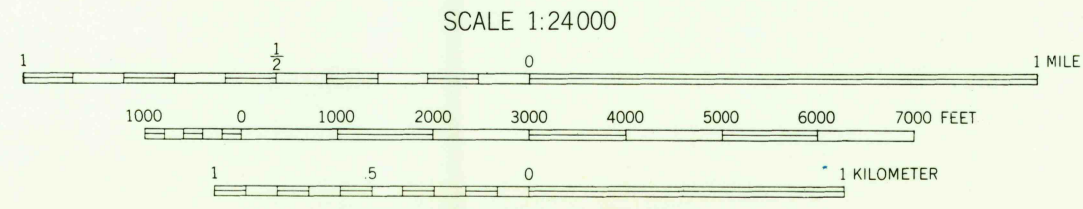
WAR DEPARTMENT
CORPS OF ENGINEERS, U. S. ARMY

GERMANNA BRIDGE QUADRANGLE
7.5 MINUTE SERIES

(MIDLAND)



Prepared by U. S. Department of Agriculture, Soil Conservation Service, under the direction of the Chief of Engineers, U. S. Army, 1943. Horizontal and vertical control by U. S. Coast and Geodetic Survey, U. S. Geological Survey, and S. C. S., 1943. Topography by S. C. S., 1943. Wide-angle photography for S. C. S., 1942. Polyconic projection, North American datum, 1927. This map complies with the National standard map accuracy requirements.



USGS
Historical File
Topographic Division

ROAD CLASSIFICATION 1943
Dependable hard-surface, heavy-duty road
Loose-surface graded, dry-weather road
Secondary, hard-surface, all-weather road
Unimproved road
U. S. Route 1
State Route 3
More than two lanes indicated by note along road with tick at point of change
3 LANE 1-4 LANE

CONTOUR INTERVAL 20 FEET
DATUM IS MEAN SEA LEVEL

APPROXIMATE MEAN DECLINATION, 1943

FOR SALE BY U. S. GEOLOGICAL SURVEY, WASHINGTON 25, D. C.
A FOLDER DESCRIBING TOPOGRAPHIC MAPS AND SYMBOLS IS AVAILABLE ON REQUEST

U.S.G.S.
FILE COPY
TOPOGRAPHIC DIVISION

GERMANNA BRIDGE, VA.
N3822.5-W7745.7.5

1970

1943