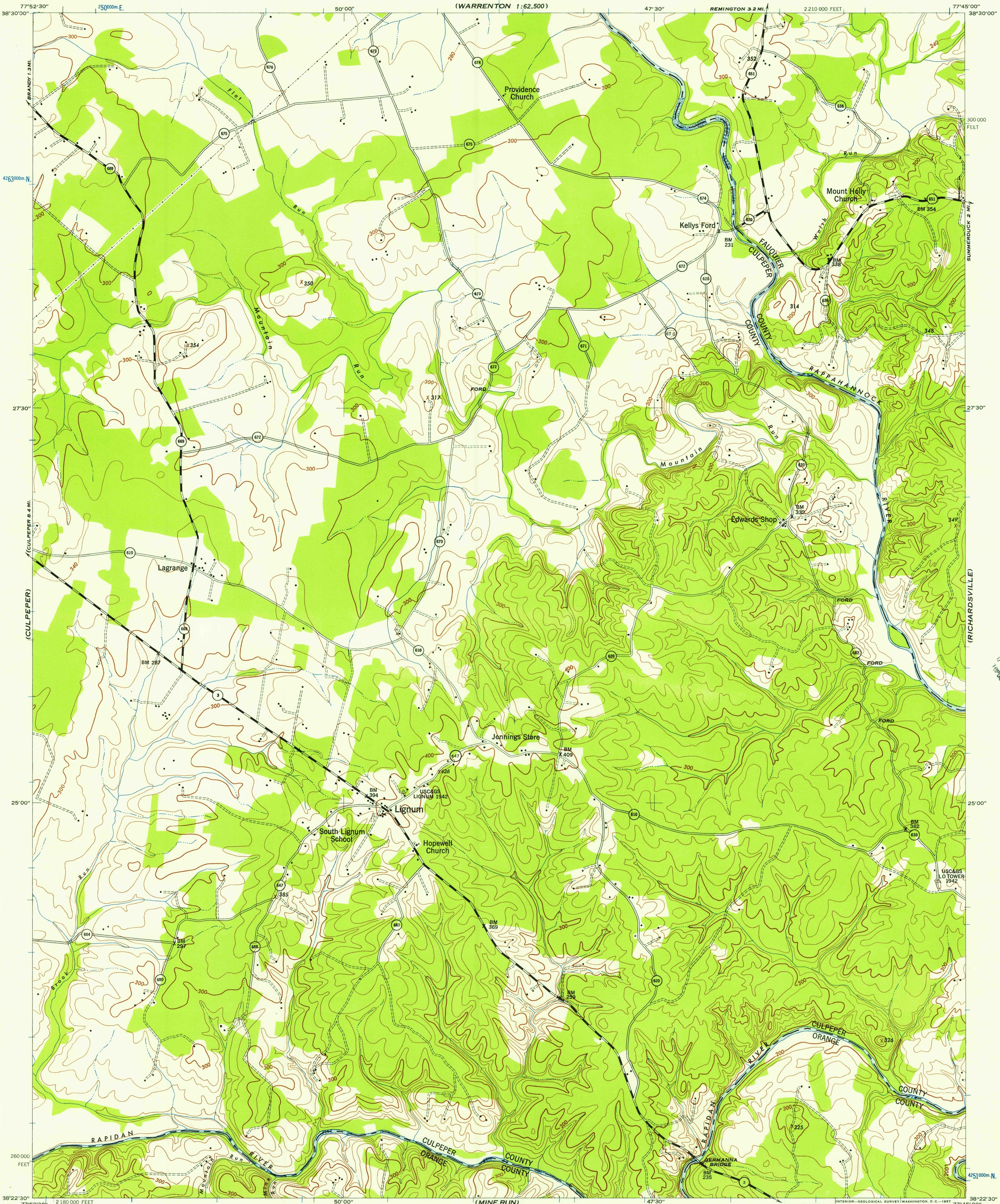


(WARRENTON 1:62,500)

REMINGTON 3.2 MI.

2 210 000 FEET

300 000 FEET

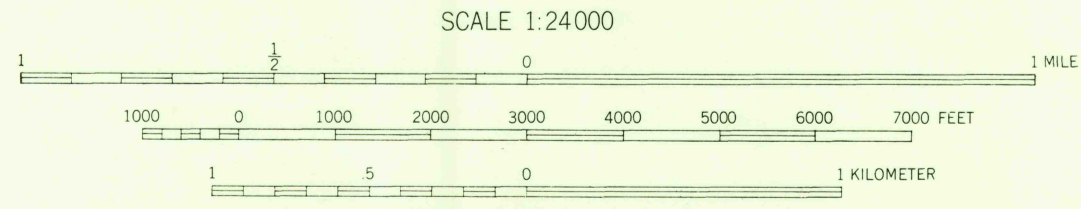


(MIDLAND)

(RICHARDSVILLE)

U.S.G.S.
FILE COPY

Prepared by U. S. Department of Agriculture, Soil Conservation Service, under the direction of the Chief of Engineers, U. S. Army, 1943. Horizontal and vertical control by U. S. Coast and Geodetic Survey, U. S. Geological Survey, and S. C. S., 1943. Topography by S. C. S., 1943. Wide-angle photography for S. C. S., 1942. Polyconic projection, North American datum, 1927. This map complies with the National standard map accuracy requirements.



SCALE 1:24 000

CONTOUR INTERVAL 20 FEET
DATUM IS MEAN SEA LEVEL

10 000-FOOT GRID TICKS VIRGINIA PLANE COORDINATE SYSTEM, NORTH ZONE SHOWN IN BLACK
1000-METER GRID TICKS UNIVERSAL TRANSVERSE MERCATOR SYSTEM ZONE 18 SHOWN IN BLUE

REPRINTED FROM MILITARY EDITION FOR CIVIL USE
FOR SALE BY U. S. GEOLOGICAL SURVEY, WASHINGTON 25, D. C.
A FOLDER DESCRIBING TOPOGRAPHIC MAPS AND SYMBOLS IS AVAILABLE ON REQUEST

USGS
Historical File
Topographic Division

U.S.G.S.
FILE COPY
TOPOGRAPHIC DIVISION

APPROXIMATE MEAN DECLINATION, 1943

GERMANNA BRIDGE, VA.
N3822.5-W7745.7/5

AUG - 5 1957

1943

(UNIONVILLE)

(CHANCELLORSVILLE)