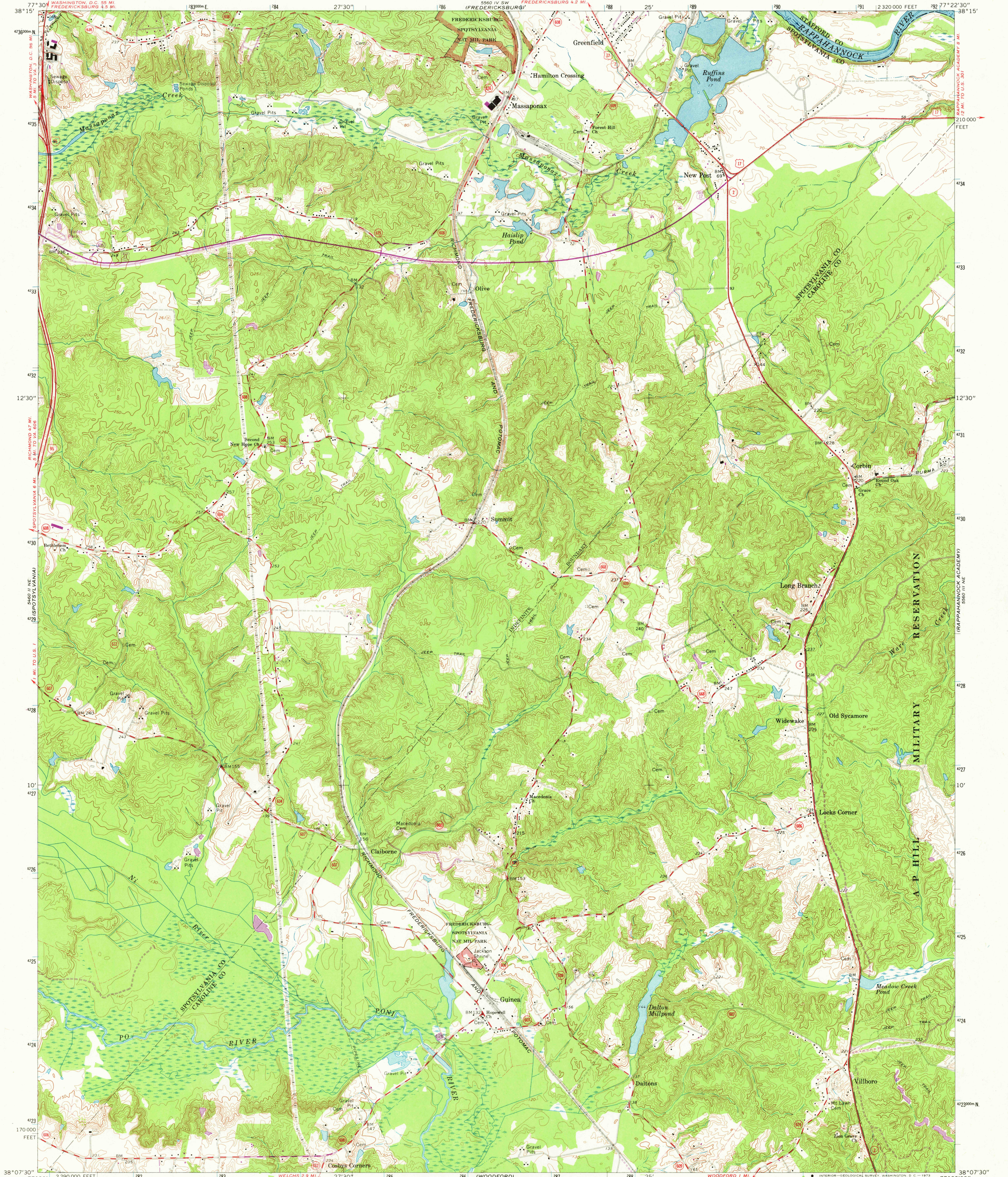


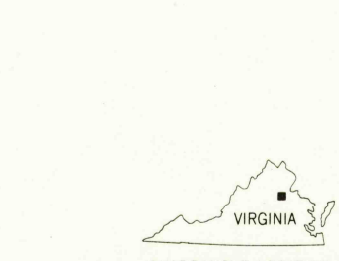
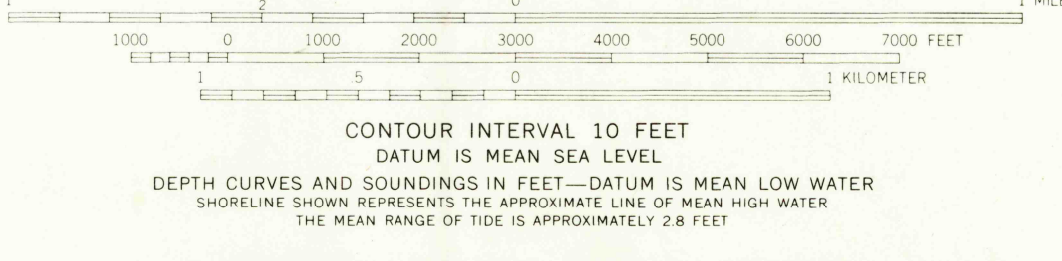
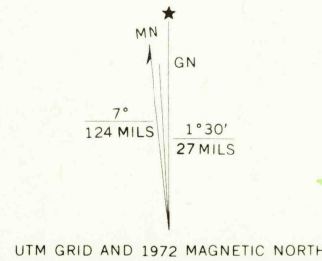
UNITED STATES
DEPARTMENT OF THE INTERIOR
GEOLOGICAL SURVEY

COMMONWEALTH OF VIRGINIA
DIVISION OF MINERAL RESOURCES
JAMES L. CALVER, STATE GEOLOGIST

GUINEA QUADRANGLE
VIRGINIA
7.5 MINUTE SERIES (TOPOGRAPHIC)



Mapped, edited, and published by the Geological Survey
Control by USGS and USC&GS
Topography by photogrammetric methods from aerial photographs
taken 1963. Field checked 1966
Supersedes Army Map Service map dated 1949
Selected hydrographic data compiled from USC&GS
chart 6055C (1966)
This information is not intended for navigational purposes
Polyconic projection. 1927 North American datum
10,000-foot grid based on Virginia coordinate system, north zone
1000-meter Universal Transverse Mercator grid ticks, zone 18,
shown in blue
Fine red dashed lines indicate selected fence and field lines where
generally visible on aerial photographs. This information is unchecked



ROAD CLASSIFICATION
Heavy-duty ——— Light-duty ———
Medium-duty ——— Unimproved dirt ———
Interstate Route U.S. Route State Route

THIS MAP COMPLIES WITH NATIONAL MAP ACCURACY STANDARDS
FOR SALE BY U.S. GEOLOGICAL SURVEY, WASHINGTON, D.C. 20242
AND VIRGINIA DIVISION OF MINERAL RESOURCES, CHARLOTTESVILLE, VIRGINIA 22903
A FOLDER DESCRIBING TOPOGRAPHIC MAPS AND SYMBOLS IS AVAILABLE ON REQUEST

Revisions shown in purple compiled in cooperation with
Commonwealth of Virginia agencies from aerial photographs
taken 1972. This information not field checked

USGS
HISTORICAL FILE
TOPOGRAPHIC DIVISION
GUINEA, VA.
N3807.5—W7722.5/7.5
1966
PHOTOREVISED 1972
AMS 5560 III NW—SERIES V834

NOV 7 1973