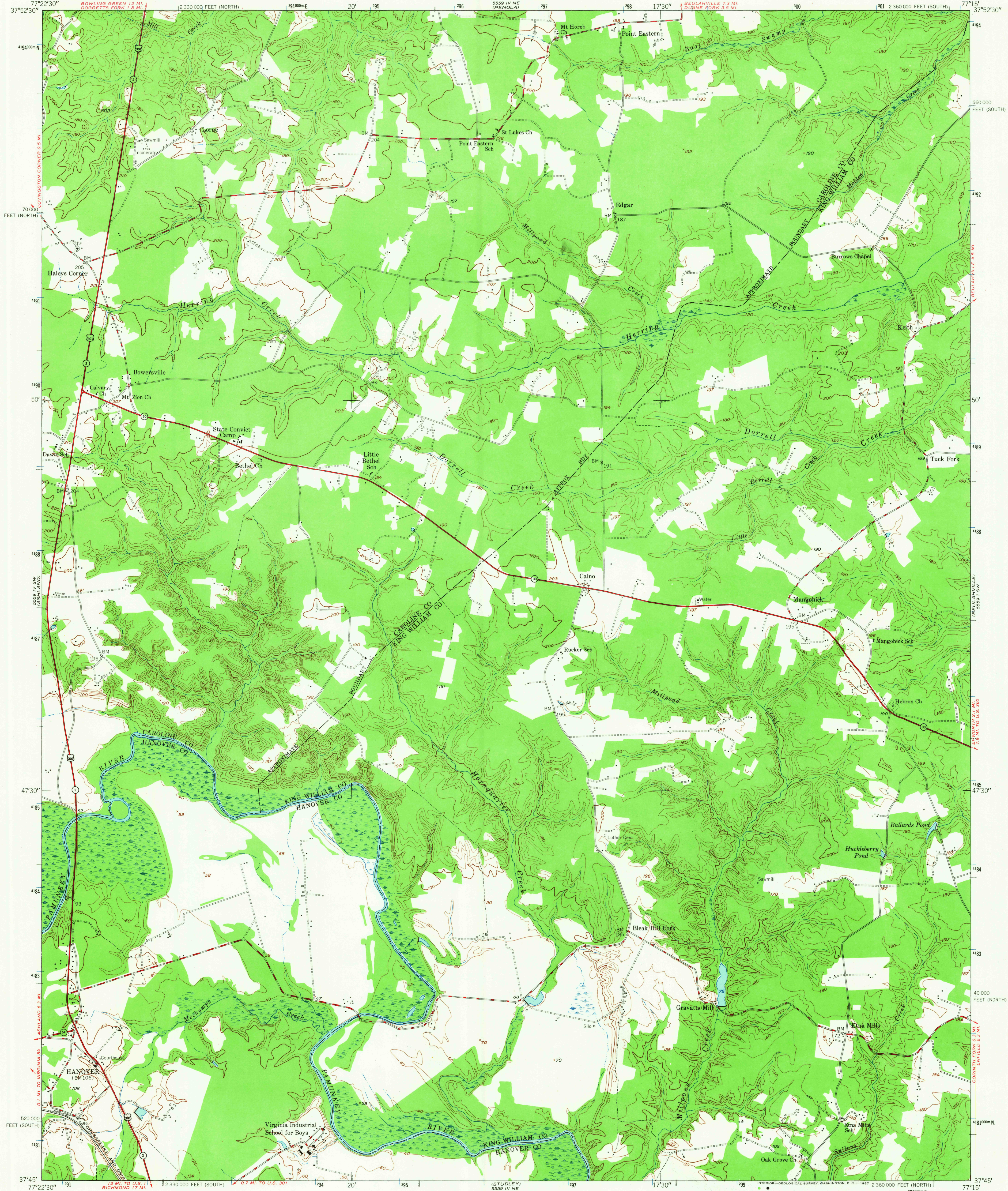


UNITED STATES
DEPARTMENT OF THE INTERIOR
GEOLOGICAL SURVEY

UNITED STATES
DEPARTMENT OF THE ARMY
CORPS OF ENGINEERS

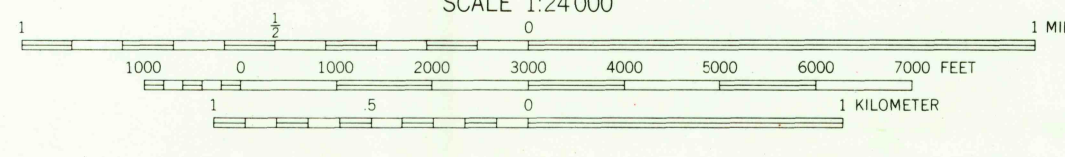
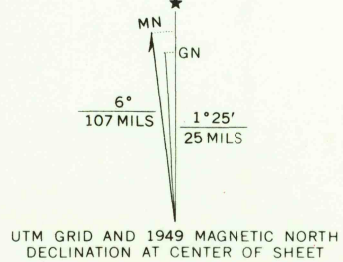
HANOVER QUADRANGLE
VIRGINIA
7.5 MINUTE SERIES (TOPOGRAPHIC)
SE/4 DOSWELL 15' QUADRANGLE



Map by the Army Map Service
Published for civil use by the Geological Survey
Control by USGS and USGS

Topography from aerial photographs by multiplex methods
Aerial photographs taken 1947. Field check 1949
Polyconic projection. 1927 North American datum
10,000-foot grids based on Virginia coordinate system,
north and south zones

Unchecked elevations are shown in brown
1000-meter Universal Transverse Mercator grid ticks,
zone 18, shown in blue



CONTOUR INTERVAL 20 FEET
DATUM IS MEAN SEA LEVEL

THIS MAP COMPLIES WITH NATIONAL MAP ACCURACY STANDARDS
FOR SALE BY U.S. GEOLOGICAL SURVEY, WASHINGTON, D. C. 20242
AND VIRGINIA DIVISION OF MINERAL RESOURCES, CHARLOTTESVILLE, VIRGINIA 22903
A FOLDER DESCRIBING TOPOGRAPHIC MAPS AND SYMBOLS IS AVAILABLE ON REQUEST

USGS
Historical File
Topographic Division

ROAD CLASSIFICATION
Heavy-duty ——— 4 LANE ROAD ——— Light-duty ———
Medium-duty ——— 4 LANE ROAD ——— Unimproved dirt ———
U.S. Route ——— State Route ———

U.S.G.S.
FILE COPY
TOPOGRAPHIC DIVISION

HANOVER, VA.
SE/4 DOSWELL 15' QUADRANGLE
N3745-W7715/7.5
1949
AMS 5559 IV SE-SERIES V834

1725
FEB 7 1957