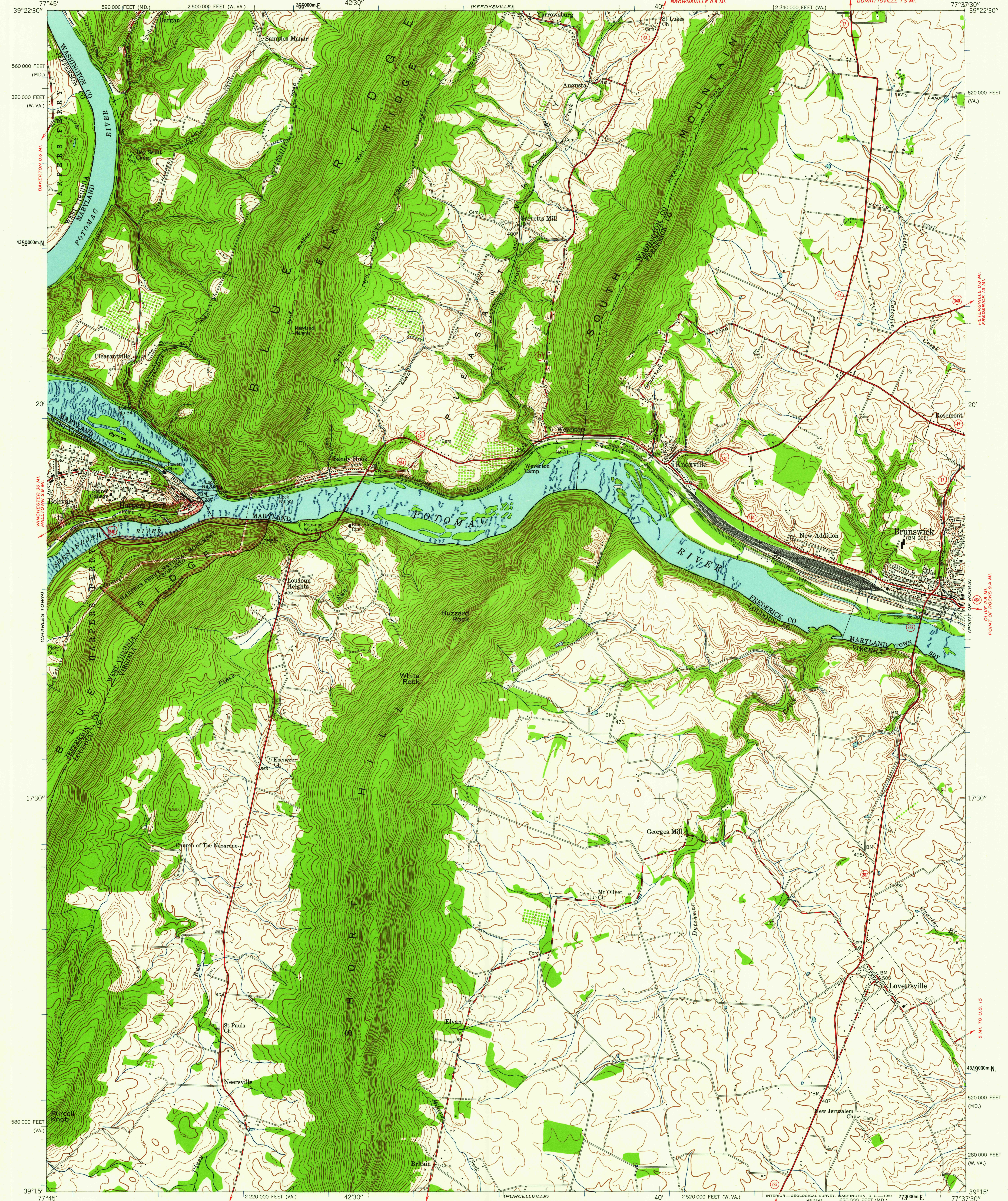


UNITED STATES  
DEPARTMENT OF THE INTERIOR  
GEOLOGICAL SURVEY

UNITED STATES  
DEPARTMENT OF THE ARMY  
CORPS OF ENGINEERS

HARPERS FERRY QUADRANGLE  
VIRGINIA-MARYLAND-WEST VIRGINIA  
7.5 MINUTE SERIES (TOPOGRAPHIC)  
SW 1/4 ANTIETAM 15' QUADRANGLE  
BURKITTSVILLE 1.5 MI.

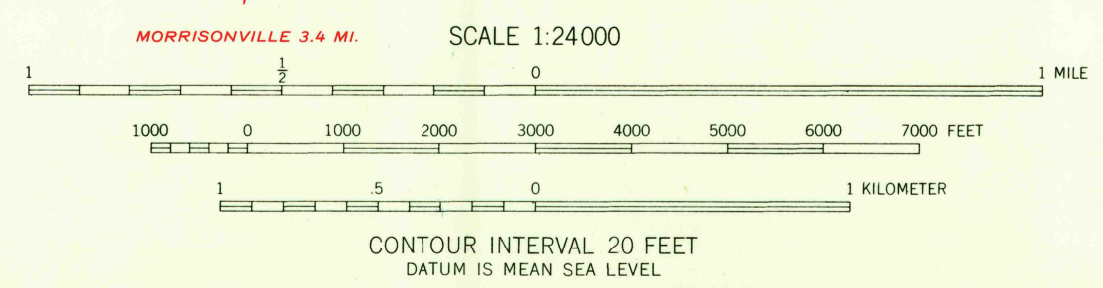


Mapped by the Army Map Service  
Edited and published by the Geological Survey

Control by USGS, USC&GS, and USSCS  
Topography from aerial photographs by photogrammetric  
methods. Aerial photographs taken 1943. Field check 1944  
Culture revised by the Geological Survey 1955

Polyconic projection. 1927 North American datum  
10,000-foot grids based on Virginia coordinate system,  
north zone, Maryland coordinate system and West Virginia  
coordinate system, north zone  
1000-meter Universal Transverse Mercator grid ticks,  
zone 18, shown in blue  
Unchecked elevations are shown in brown

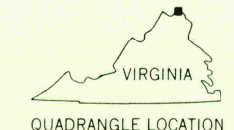
TRUE NORTH  
MAGNETIC NORTH  
APPROXIMATE MEAN  
DECLINATION, 1955



USGS  
Historical File  
Topographic Division

ROAD CLASSIFICATION  
Heavy-duty ——— Light-duty ———  
Medium-duty ——— Unimproved dirt ———  
U.S. Route ——— State Route ———

HARPERS FERRY, VA.-MD.-W. VA.  
SW 1/4 ANTIETAM 15' QUADRANGLE  
N3915-W7737.5/7.5  
1955



RETURN TO:  
USGS AND HISTORICAL MAP ARCHIVES

APR 17 1964

6140