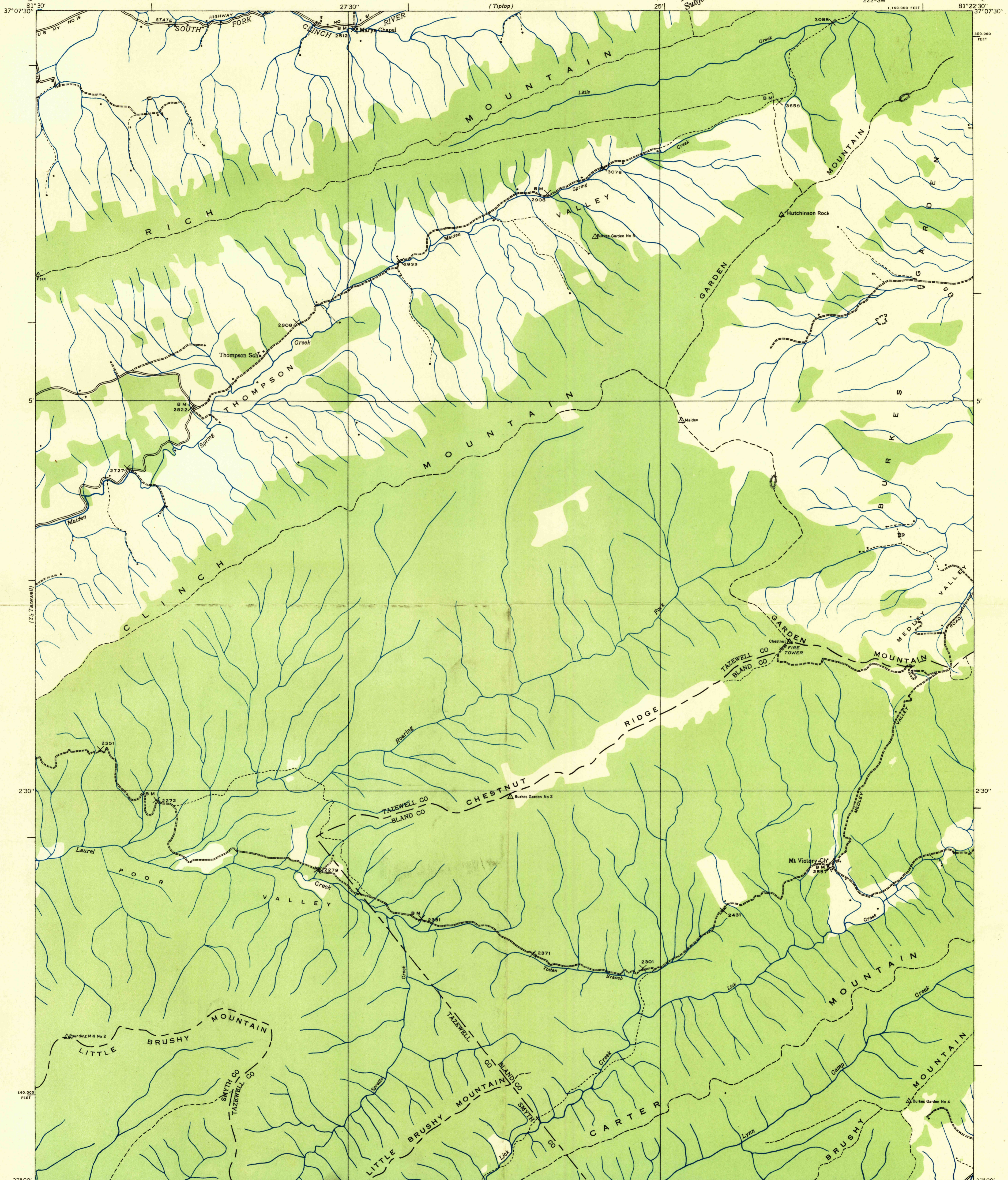
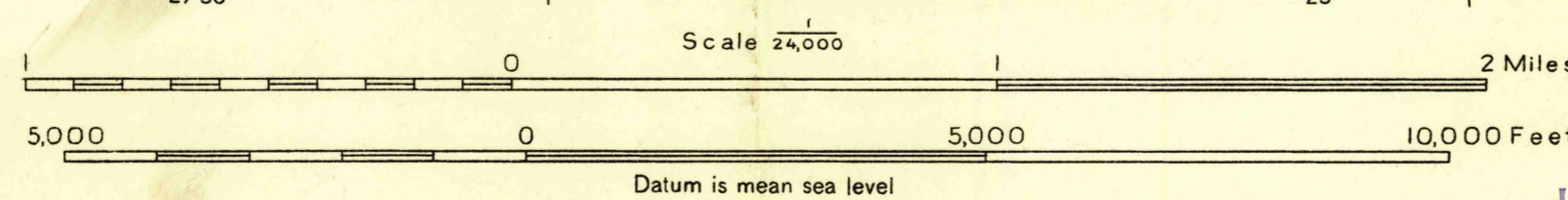


Advance sheet.
Subject to correction.



Albert Pike, Division Engineer
Compiled by U. S. Geological Survey from aerial photographs
Control by U. S. Geological Survey and U. S. Coast and Geodetic Survey
Field examination in 1934 and 1935



PRINTED BY U. S. GEOLOGICAL SURVEY
Polyconic projection. 1927 North American datum
10,000 foot grid based on Virginia
rectangular coordinate system

USGS
Historical File
Topographic Division

APPROXIMATE MEAN
DECLINATION, 1935
Ridge line
Trail
Sinks
HUTCHINSON ROCK, VA.
222-SW