

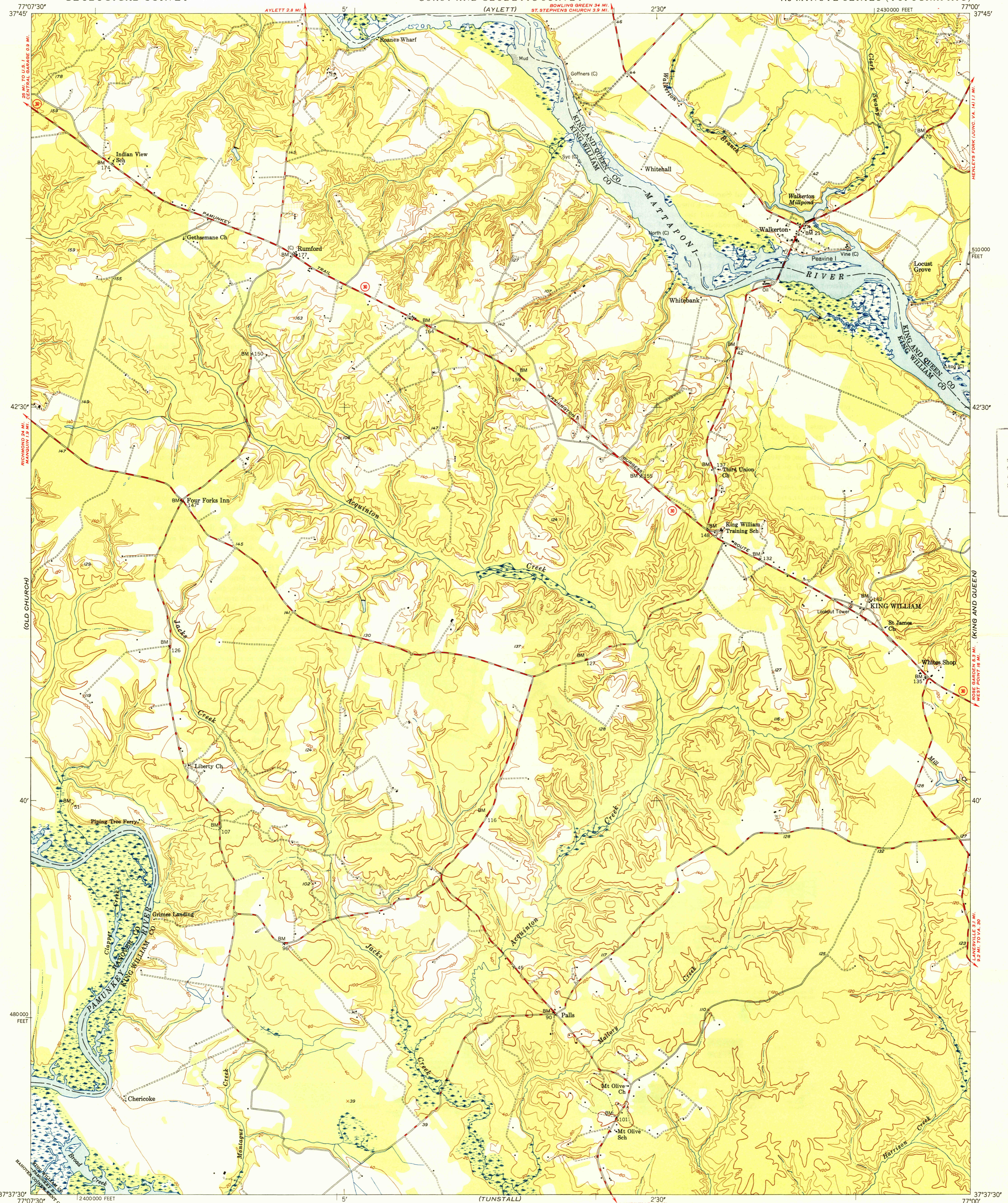
AYLETT
162550

UNITED STATES
DEPARTMENT OF THE INTERIOR
GEOLOGICAL SURVEY

UNITED STATES
DEPARTMENT OF COMMERCE
COAST AND GEODETIC SURVEY

KING WILLIAM QUADRANGLE
VIRGINIA
7.5 MINUTE SERIES (TOPOGRAPHIC)

(HOWERTONS)
1:3680

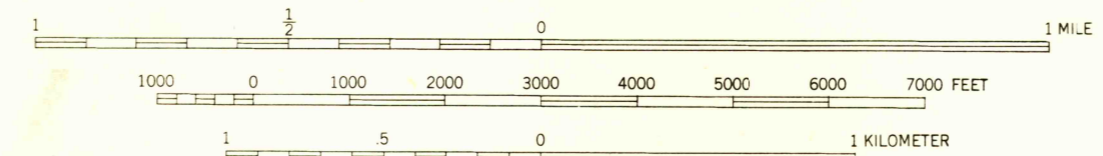


U.S.G.S.
FILE COPY

U.S.G.S.
FILE COPY

Mapped by U.S. Coast & Geodetic Survey
Edited and published by the Geological Survey
Control by USC&GS(C) and USGS(G)
Topography from aerial photographs by multiplex methods
Aerial photographs taken 1945, field check 1947
Polyconic projection, 1927 North American datum
10,000-foot grid based on Virginia coordinate system,
south zone
No distinction is made between dwellings, barns,
commercial and industrial buildings

APPROXIMATE MEAN
DECLINATION, 1947



SCALE 1:24000
CONTOUR INTERVAL 20 FEET
DATUM IS MEAN SEA LEVEL
SHORELINE SHOWN REPRESENTS THE APPROXIMATE LINE OF MEAN HIGH WATER
THE AVERAGE RANGE OF TIDE IS APPROXIMATELY 4 FEET

THIS MAP COMPLIES WITH NATIONAL MAP ACCURACY STANDARDS
FOR SALE BY U. S. GEOLOGICAL SURVEY, WASHINGTON 25, D. C.

USGS
Historical File
Topographic Division

ROAD CLASSIFICATION
HARD-SURFACE ALL WEATHER ROADS DRY WEATHER ROADS
Heavy-duty... 4 LANE LANE Improved dirt...
Medium-duty... 4 LANE LANE Unimproved dirt...
Loose-surface, graded, or narrow hard-surface...
U. S. Route State Route

WOODLAND
Woods
Orchard

KING WILLIAM, VA.
N3737.5-W7700/7.5

U.S.G.S.
FILE COPY

EDITION OF 1949

JUL 15 1949

3055