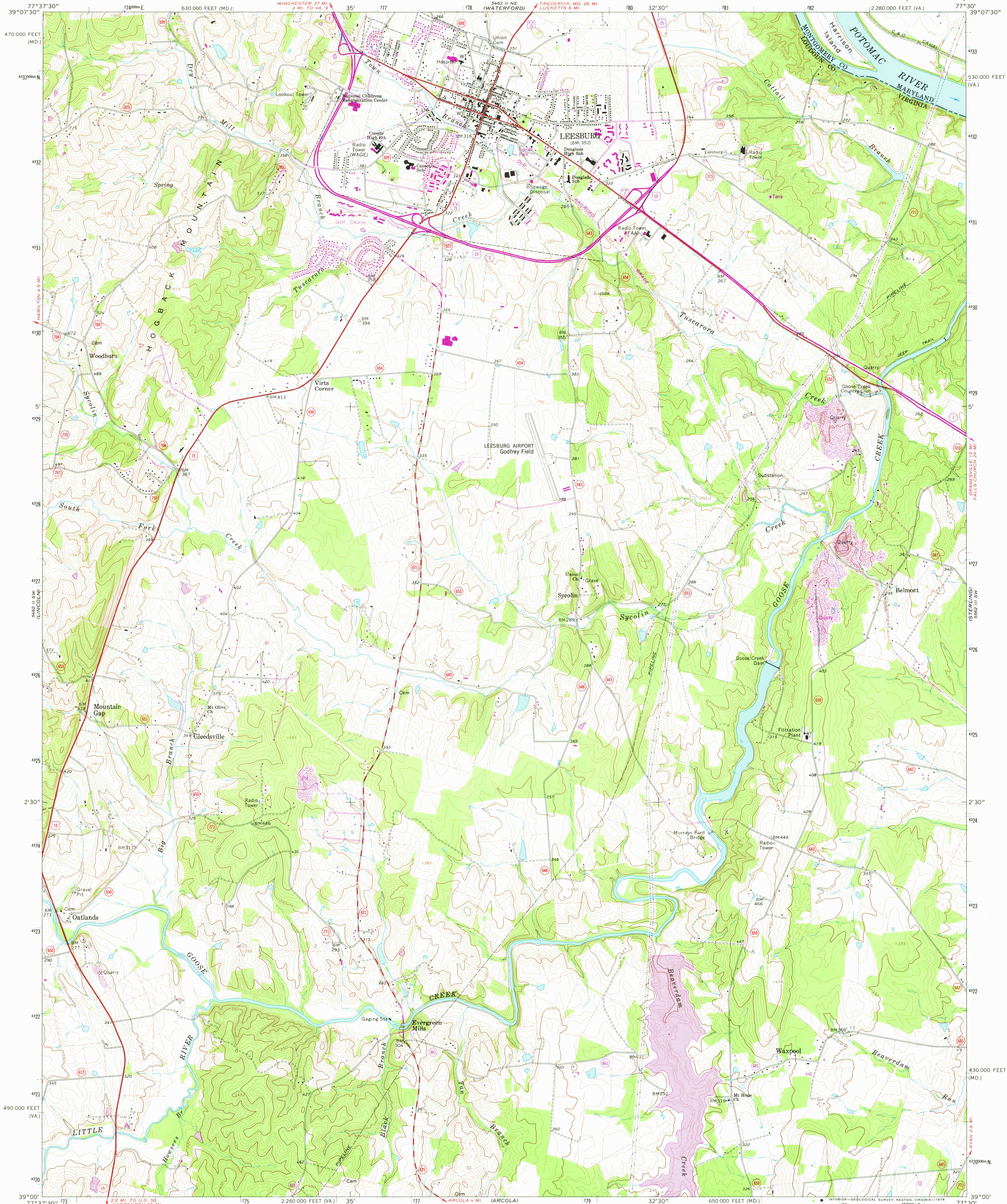
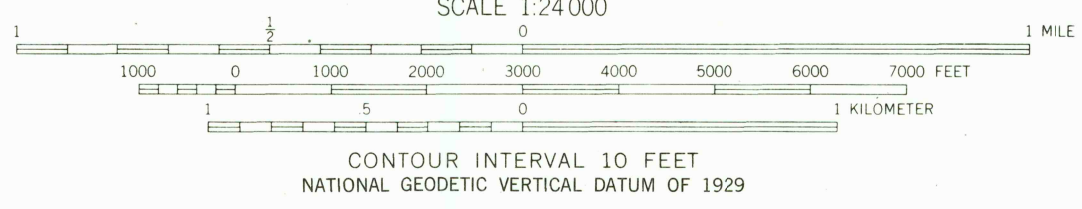
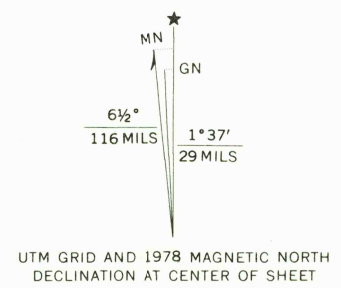


UNITED STATES  
DEPARTMENT OF THE INTERIOR  
GEOLOGICAL SURVEY

LEESBURG QUADRANGLE  
VIRGINIA—MARYLAND  
7.5 MINUTE SERIES (TOPOGRAPHIC)



Mapped, edited, and published by the Geological Survey  
Control by USGS, USC&GS, and USCE  
Topography by photogrammetric methods from aerial photographs  
taken 1963 and 1964. Field checked 1968  
Supersedes Army Map Service map dated 1952  
Polyconic projection. 1927 North American datum  
10,000-foot grids based on Virginia coordinate system,  
north zone, and Maryland coordinate system  
1,000-meter Universal Transverse Mercator grid ticks,  
zone 18, shown in blue  
Fine red dashed lines indicate selected fence and field lines where  
generally visible on aerial photographs. This information is unchecked  
Purple hatching indicates area to be submerged by  
Beaverdam Creek Reservoir at elevation 290 feet



THIS MAP COMPLIES WITH NATIONAL MAP ACCURACY STANDARDS  
FOR SALE BY U.S. GEOLOGICAL SURVEY, RESTON, VIRGINIA 22092  
AND VIRGINIA DIVISION OF MINERAL RESOURCES, CHARLOTTESVILLE, VIRGINIA 22903  
A FOLDER DESCRIBING TOPOGRAPHIC MAPS AND SYMBOLS IS AVAILABLE ON REQUEST



ROAD CLASSIFICATION  
Primary highway, all weather, hard surface  
Secondary highway, all weather, hard surface  
Light duty road, all weather, improved surface  
Unimproved road, fair or dry weather  
U.S. Route  
State Route  
USGS  
Historical File  
Photographic Division  
LEESBURG, VA.—MD.  
N3900—W7730/7.5  
1968  
PHOTOREVISED 1978  
AMS 5462 II SE—SERIES V834  
MAR 17 1978