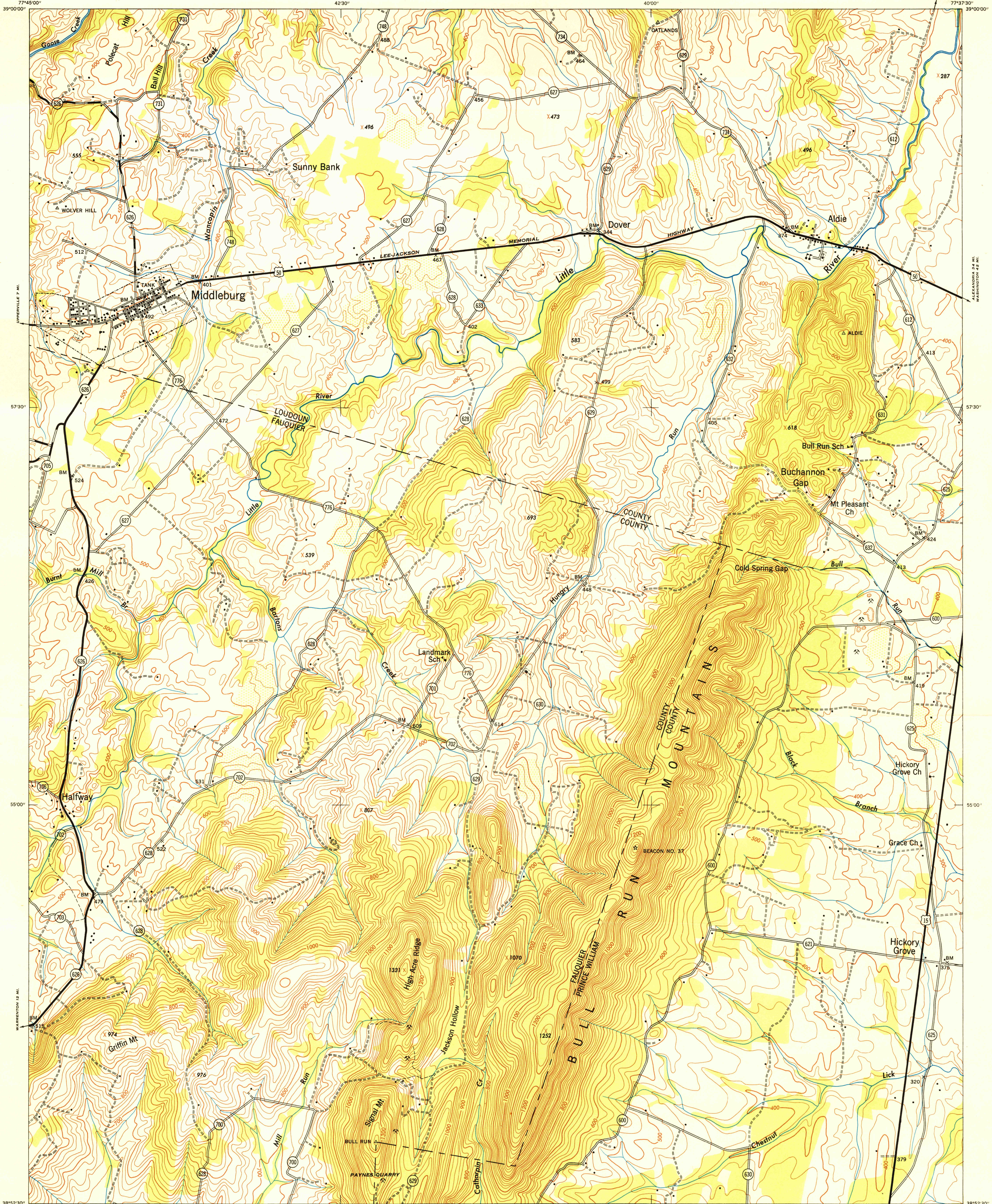
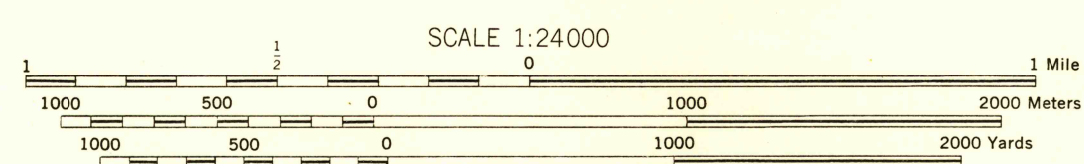


U.S.G.S.  
FILE COPY  
Inspection and Billing

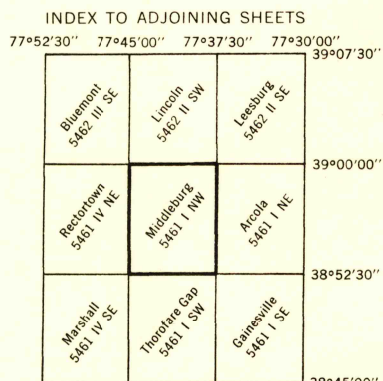
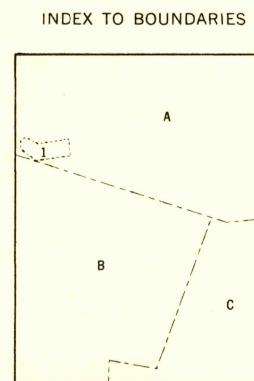
U.S.G.S.  
FILE COPY  
Inspection and Billing



First Edition (AMS 1), 1944; (AMS 2), 1946.  
Prepared under the direction of the Chief of Engineers by the Army Map Service (AM), U. S. Army, Washington, D. C. Copied in 1946 from Virginia, 1:31,680, AMS, Sheet 5461 I NW, 1944. Original map compiled from aerial photography by stereophotogrammetric methods. Aerial photography by U. S. Army Air Force, 1943. Horizontal and vertical control by USCGAS, USGS and SCS. Scale changed and marginal data revised, 1946. This map complies with the national standard map accuracy requirements.

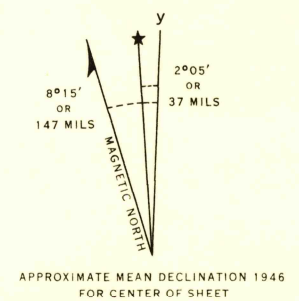


CONTOUR INTERVAL 20 FEET  
DATUM IS MEAN SEA LEVEL  
POLYCONIC PROJECTION  
1927 NORTH AMERICAN DATUM



LEGEND	
ROAD DATA 1943	
Hard surface, heavy duty road, more than two lanes wide	Loose surface, graded, dry-weather road
Hard surface, heavy duty road, two lanes wide; Federal route marker	Trail; Dirt road
Secondary, hard surface, all-weather road	Railroad in street; Carline in street
Two lanes wide; State route marker	
RAILROADS	
Standard gauge	Single track Double track
Narrow gauge	Single track Double track
Single track carline	Double track carline
BOUNDARIES	
State	County (with monument)
County (with monument)	County subdivision
Reservation	Military reservation
School; Church	Cemetery
Churchyard	
Mine	Triangulation station
Intermittent lake	Bench mark
Dam	Spot elevation
Rapids; Falls	Large rapids and falls
Swamp, marsh	Woods; brushwood
Brushtwood	Wharf, pier
Man-made shoreline	

REPRINTED FROM MILITARY EDITION FOR CIVIL USE 1949  
SOLD AND DISTRIBUTED BY U. S. GEOLOGICAL SURVEY, WASHINGTON 25, D. C.



U.S.G.S.  
FILE COPY  
Inspection and Billing

MIDDLEBURG, VIRGINIA  
N3852.5-W7737.5/7.5

1-17-58  
2135