

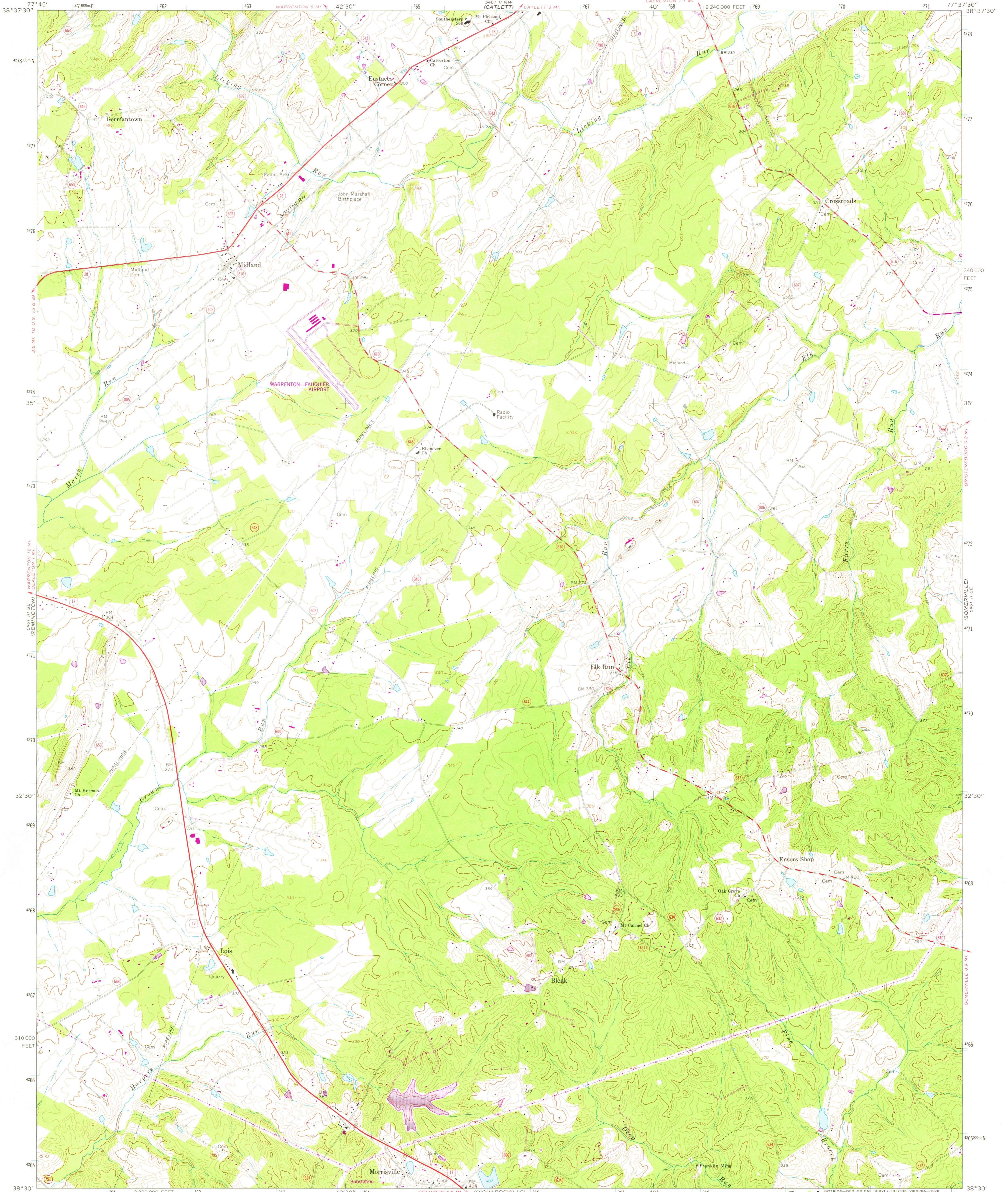
5461 III SE
WARRENTON

UNITED STATES
DEPARTMENT OF THE INTERIOR
GEOLOGICAL SURVEY

COMMONWEALTH OF VIRGINIA
DIVISION OF MINERAL RESOURCES
JAMES L. CALVER, STATE GEOLOGIST

MIDLAND QUADRANGLE
VIRGINIA - FAUQUIER CO.
7.5 MINUTE SERIES (TOPOGRAPHIC)

5461 III SE
WOKESVILLE



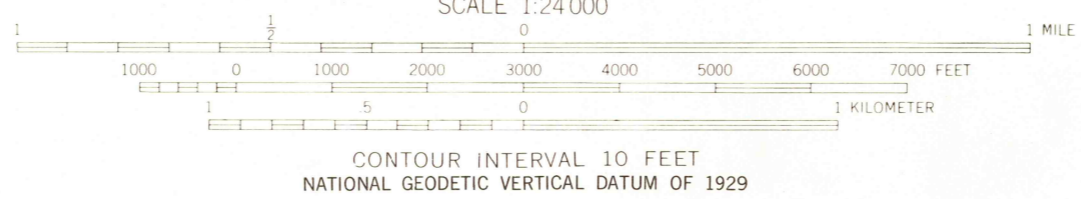
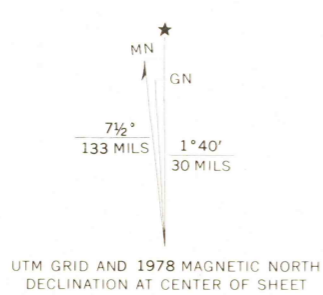
Mapped, edited, and published by the Geological Survey

Control by USGS and USC&GS

Topography by photogrammetric methods from aerial photographs taken 1965. Field checked 1967. Supersedes Army Map Service map dated 1943.

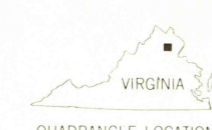
Polyconic projection. 1927 North American datum. 10,000-foot grid based on Virginia coordinate system, north zone. 1000-meter Universal Transverse Mercator grid ticks, zone 18, shown in blue.

Fine red dashed lines indicate selected fence and field lines where generally visible on aerial photographs. This information is unchecked. Revisions shown in purple compiled in cooperation with Commonwealth of Virginia agencies from aerial photographs taken 1977 and other source data. This information not field checked. Map edited 1978.



THIS MAP COMPLIES WITH NATIONAL MAP ACCURACY STANDARDS FOR SALE BY U. S. GEOLOGICAL SURVEY, RESTON, VIRGINIA 22092 AND VIRGINIA DIVISION OF MINERAL RESOURCES, CHARLOTTESVILLE, VIRGINIA 22903. A FOLDER DESCRIBING TOPOGRAPHIC MAPS AND SYMBOLS IS AVAILABLE ON REQUEST.

ROAD CLASSIFICATION	
Primary highway, all weather, hard surface	Light-duty road, all weather, improved surface
Secondary highway, all weather, hard surface	Unimproved road, fair or dry weather
U. S. Route	State Route



USGS
Historical File
Topographic Division

MIDLAND, VA.
N3830-W7737.5/7.5

1967
PHOTOREVISED 1978
AMS 5461 III SW-SERIES V834

OCT 13 1978

3000