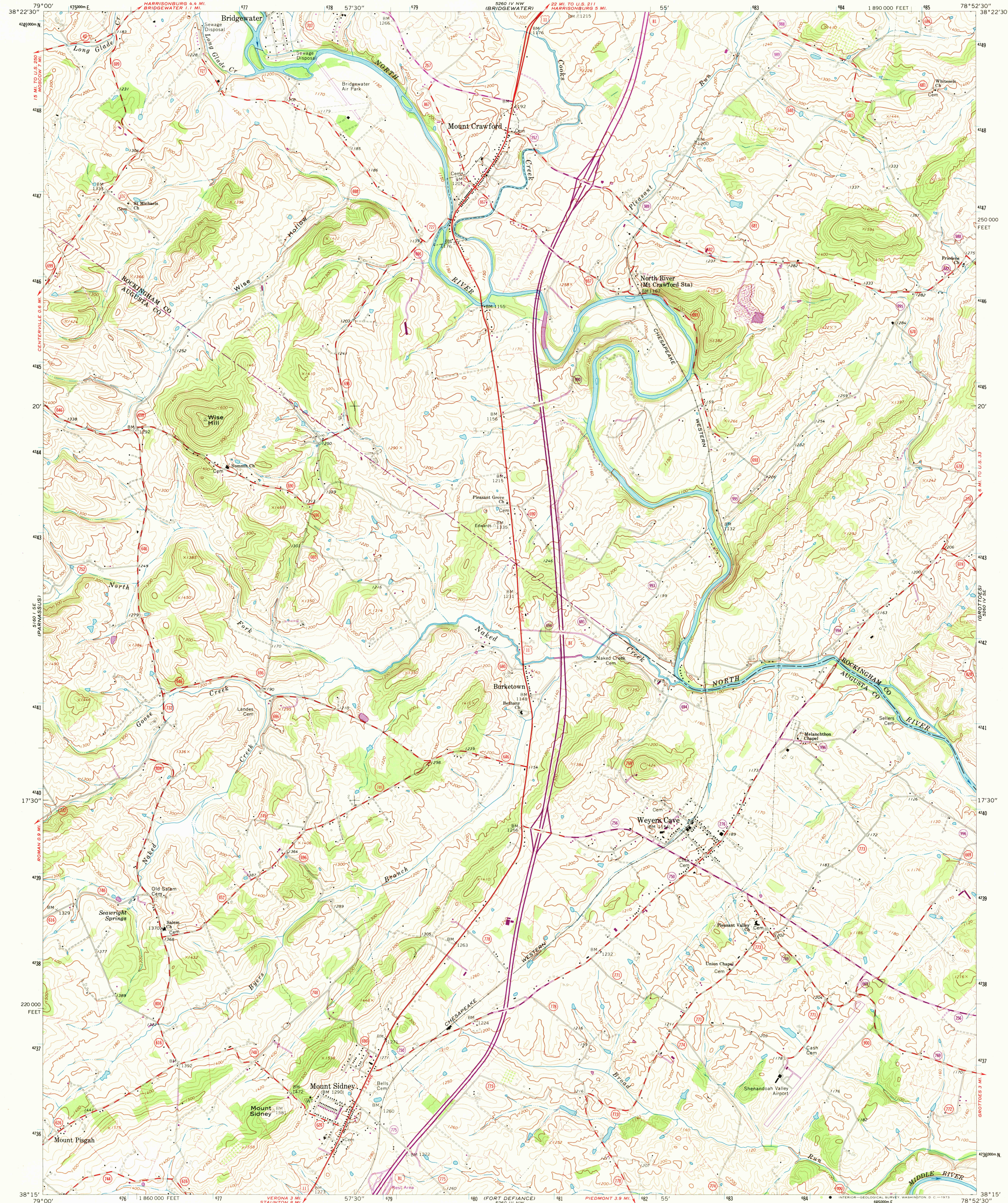


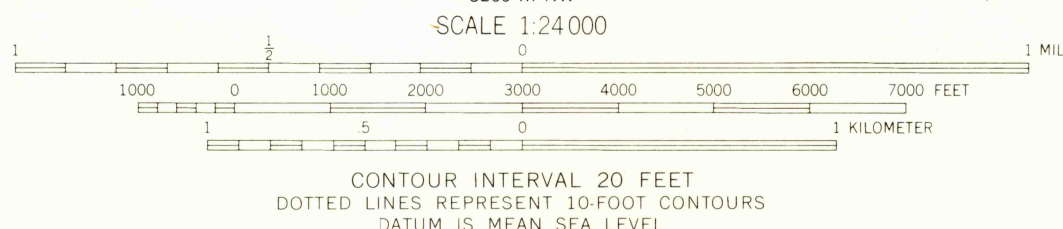
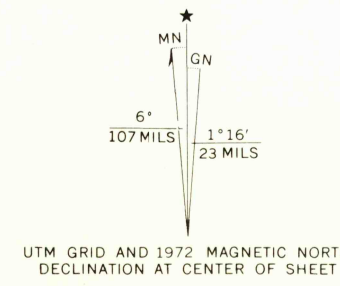
UNITED STATES
DEPARTMENT OF THE INTERIOR
GEOLOGICAL SURVEY

COMMONWEALTH OF VIRGINIA
DIVISION OF MINERAL RESOURCES
JAMES L. CALVER, STATE GEOLOGIST

MOUNT SIDNEY QUADRANGLE
VIRGINIA
7.5 MINUTE SERIES (TOPOGRAPHIC)



Mapped, edited, and published by the Geological Survey
Control by USGS and USC&GS
Topography by photogrammetric methods from aerial photographs
taken 1963. Field checked 1964
Polyconic projection, 1927 North American datum
10,000-foot grid based on Virginia coordinate system, north zone
1000-meter Universal Transverse Mercator grid ticks, zone 17,
shown in blue
Fine red dashed lines indicate selected fence and field lines where
generally visible on aerial photographs. This information is unchecked
Revisions shown in purple compiled in cooperation with
Commonwealth of Virginia agencies from aerial photographs
taken 1972. This information not field checked



THIS MAP COMPLIES WITH NATIONAL MAP ACCURACY STANDARDS
FOR SALE BY U. S. GEOLOGICAL SURVEY, WASHINGTON, D. C. 20242
AND VIRGINIA DIVISION OF MINERAL RESOURCES, CHARLOTTESVILLE, VIRGINIA 22903
A FOLDER DESCRIBING TOPOGRAPHIC MAPS AND SYMBOLS IS AVAILABLE ON REQUEST



ROAD CLASSIFICATION
Heavy-duty ——— Light-duty ———
Medium-duty ——— Unimproved dirt ———
Interstate Route U. S. Route State Route

USGS
Historical File
Topographic Division

SEP 4 1973
MOUNT SIDNEY, VA.
N3815-W7852.5/7.5
1964
PHOTOREVISED 1972
AMS 5260 IV SW-SERIES V834

2785