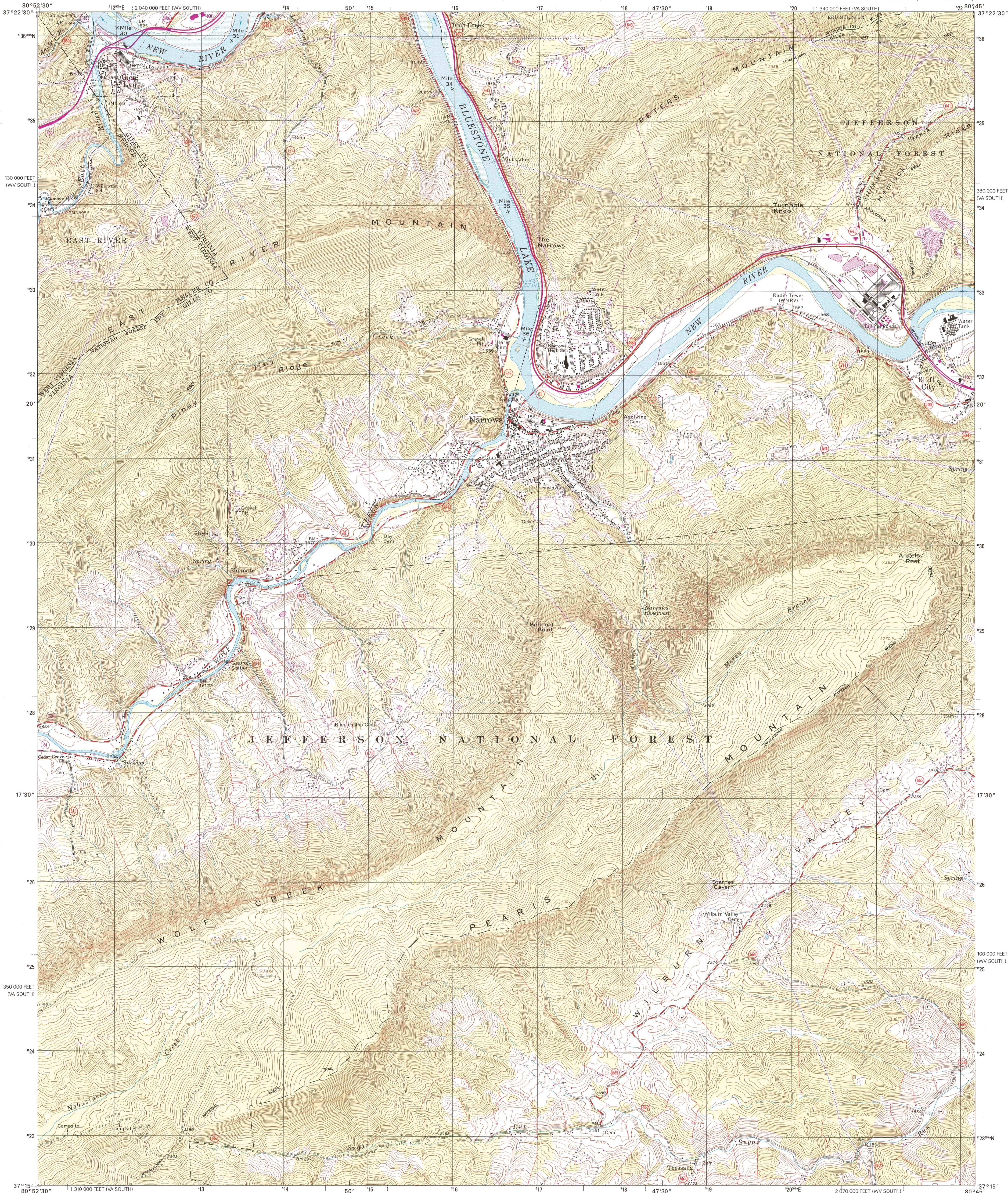




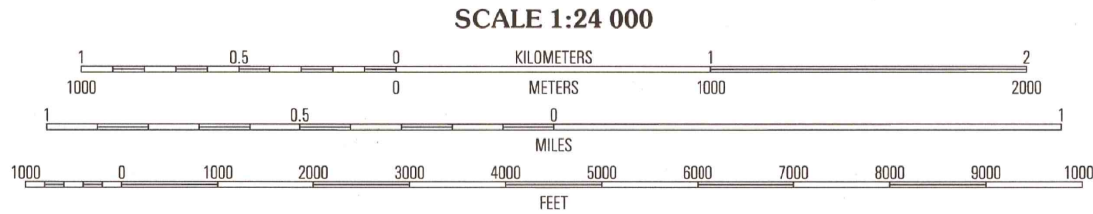
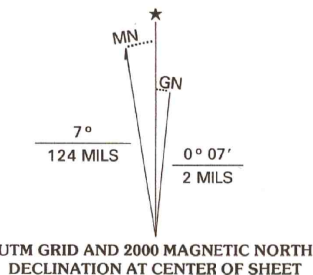
U.S. DEPARTMENT OF THE INTERIOR
U.S. GEOLOGICAL SURVEY

COMMONWEALTH OF VIRGINIA
DEPARTMENT OF TRANSPORTATION
DEPARTMENT OF MINES, MINERALS, AND ENERGY

NARROWS QUADRANGLE
VIRGINIA-WEST VIRGINIA
7.5-MINUTE SERIES (TOPOGRAPHIC)



Produced by the United States Geological Survey
Topography compiled 1963. Planimetry derived from imagery taken 1982 and other sources. Photomaps derived from imagery taken 1982 and other sources. No major culture or drainage changes observed. Survey control current as of 1965. Boundaries, other than corporate, verified 1999
North American Datum of 1927 (NAD 27)
Projection: Virginia coordinate system, south zone
(Lambert conformal conic)
10 000-foot ticks: Virginia coordinate system, south zone and West Virginia coordinate system, south zone
1000-meter Universal Transverse Mercator grid, zone 17
North American Datum of 1983 (NAD 83) is shown by dashed corner ticks. The values of the shift between NAD 27 and NAD 83 for 7.5-minute intersections are obtainable from National Geodetic Survey NADCON software
Areas covered by dashed light-blue pattern are subject to controlled inundation
There may be private inholdings within the boundaries of the National or State reservations shown on this map
Information shown in purple may not meet USGS content standards and may conflict with previously mapped contours



CONTOUR INTERVAL 20 FEET
NATIONAL GEODETIC VERTICAL DATUM OF 1929
TO CONVERT FROM FEET TO METERS, MULTIPLY BY 0.3048

THIS MAP COMPLIES WITH NATIONAL MAP ACCURACY STANDARDS
FOR SALE BY U.S. GEOLOGICAL SURVEY, P.O. BOX 25286, DENVER, COLORADO 80225
AND VIRGINIA DIVISION OF MINERAL RESOURCES, CHARLOTTESVILLE, VIRGINIA 22903
A FOLDER DESCRIBING TOPOGRAPHIC MAPS AND SYMBOLS IS AVAILABLE ON REQUEST



QUADRANGLE LOCATION

ROAD CLASSIFICATION
Primary highway
hard surface
Secondary highway
hard surface
Light-duty road, hard or
improved surface
Unimproved road
Interstate Route
U.S. Route
State Route

1	2	3	1 Lerona
			2 Peterstown
			3 Lindsie
4		5	4 Oakvale
			5 Pearisburg
			6 Mechanicburg
6	7	8	7 White Gate
			8 Staffordville

ADJOINING 7.5' QUADRANGLE NAMES

NARROWS, VA-WV
1998

NIMA 4558 IV SE-SERIES V834



RECEIVED
JUN 30 2000

USGS INFO
HISTORICAL MAPS