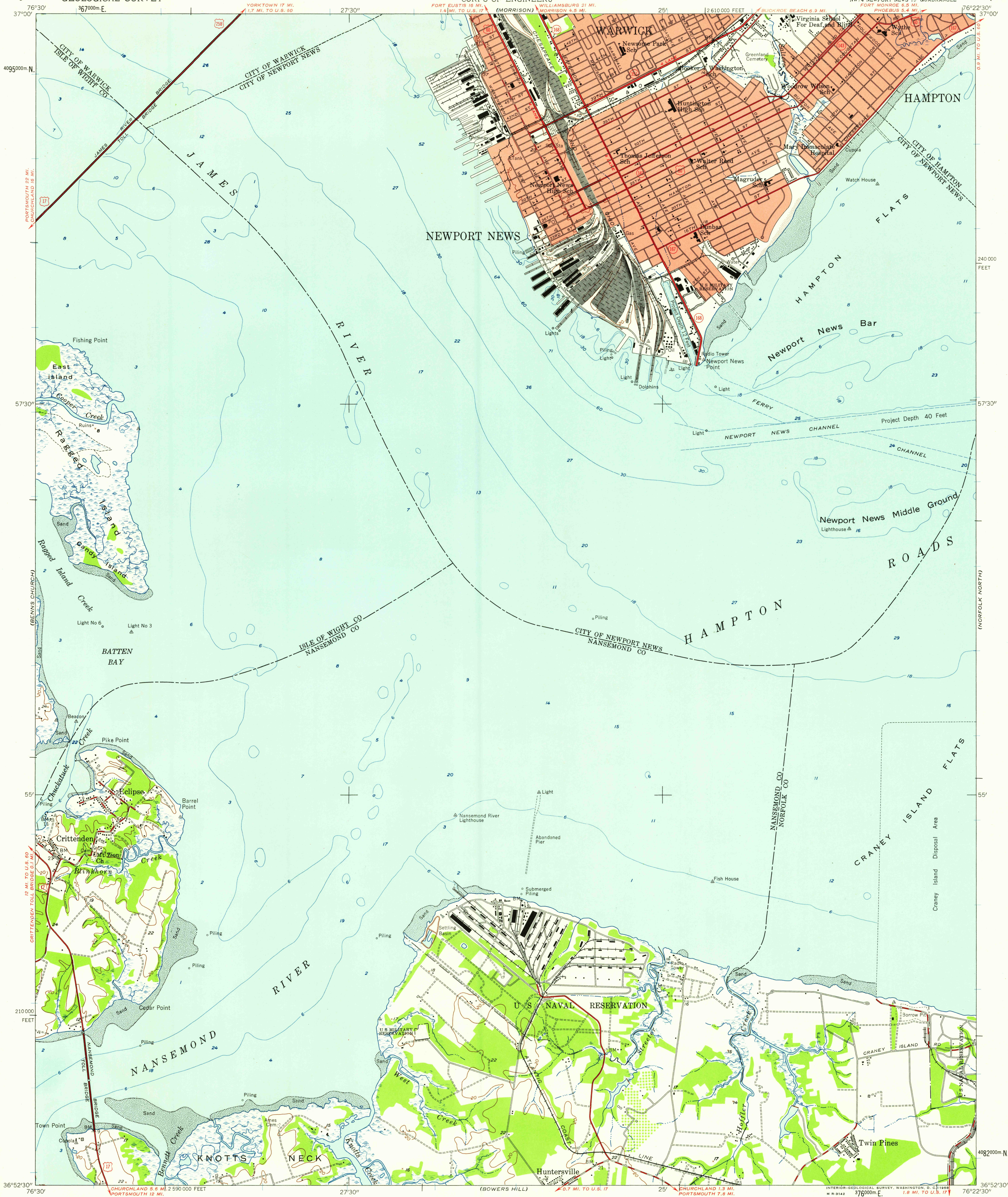


UNITED STATES
DEPARTMENT OF THE INTERIOR
GEOLOGICAL SURVEY

UNITED STATES
DEPARTMENT OF THE ARMY
CORPS OF ENGINEERS

NEWPORT NEWS QUADRANGLE
VIRGINIA
7.5 MINUTE SERIES (TOPOGRAPHIC)

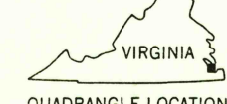


Mapped by the Army Map Service
Published for civil use by the Geological Survey
Control by USGS and USC&GS
Topography by planetable surveys 1944. Culture revised
from aerial photographs by photogrammetric methods
Aerial photographs taken 1951. Field check 1955
Hydrography compiled from USC&GS charts 400 and 529 (1952)
Polyconic projection. 1927 North American datum
10,000-foot grid based on Virginia coordinate system, south zone
1000-meter Universal Transverse Mercator grid ticks,
zone 18, shown in blue
Red tint indicates areas in which only
landmark buildings are shown

TRUE NORTH
MAGNETIC NORTH
APPROXIMATE MEAN
DECLINATION, 1955

SCALE 1:24000
1 0 1000 2000 3000 4000 5000 6000 7000 FEET
1 0 5 10 15 20 25 30 35 40 45 50 55 60 65 70 75 80 85 90 95 100 KILOMETER
CONTOUR INTERVAL 20 FEET
DATUM IS MEAN SEA LEVEL
DEPTH CURVES AND SOUNDINGS IN FEET-DATUM IS MEAN LOW WATER
SHORELINE SHOWN REPRESENTS THE APPROXIMATE LINE OF MEAN HIGH WATER
THE MEAN RANGE OF TIDE IS APPROXIMATELY 3 FEET

USGS
Historical File
Topographic Division



ROAD CLASSIFICATION
Heavy-duty ——— Light-duty ———
Medium-duty ——— Unimproved dirt ———
U.S. Route ——— State Route ———

U.S.G.S.
FILE COPY
TOPOGRAPHIC DIVISION

NEWPORT NEWS, VA.
NW 1/4 NEWPORT NEWS 15' QUADRANGLE
N 3652.5 - W 7622.5 / 7.5

1955

JUL 9 - 1958

SEE NEWPORT NEWS SOUTH (1964) 1435