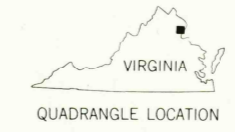
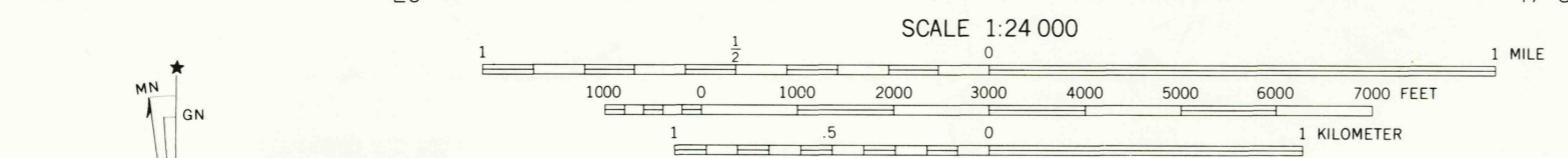




Produced and published by the Geological Survey in cooperation with the Soil Conservation Service. Orthophotograph prepared from 1:80,000-scale aerial photograph taken March 24, 1977. Projection: Virginia coordinate system, north zone (Lambert conformal conic). 10,000-foot grid ticks based on Virginia coordinate system, north zone and Maryland coordinate system 1000-meter Universal Transverse Mercator grid, zone 18. 1927 North American Datum. To place on the predicted North American Datum 1983 move the projection lines 9 meters south and 26 meters west as shown by dashed corner ticks. Photom imagery rectified by optical scanning which may produce double or mismatched images; use the mean of image positions for map point.



PRINCIPAL NUMBERED HIGHWAYS  
Interstate Route U.S. Route State Route

This quadrangle area also covered by 1:24,000-scale topographic map

THIS MAP COMPLIES WITH NATIONAL MAP ACCURACY STANDARDS FOR SALE BY U.S. GEOLOGICAL SURVEY, RESTON, VIRGINIA 22092 AND VIRGINIA DIVISION OF MINERAL RESOURCES, CHARLOTTESVILLE, VIRGINIA 22903

QUANTICO, VA.-MD.  
N3830-W7715/7.5  
1977  
DMA 5561 III SE-SERIES V054

RETURN TO:  
USGS AND HISTORICAL MAP ARCHIVES

JAN 10 1983

1/7/83  
375