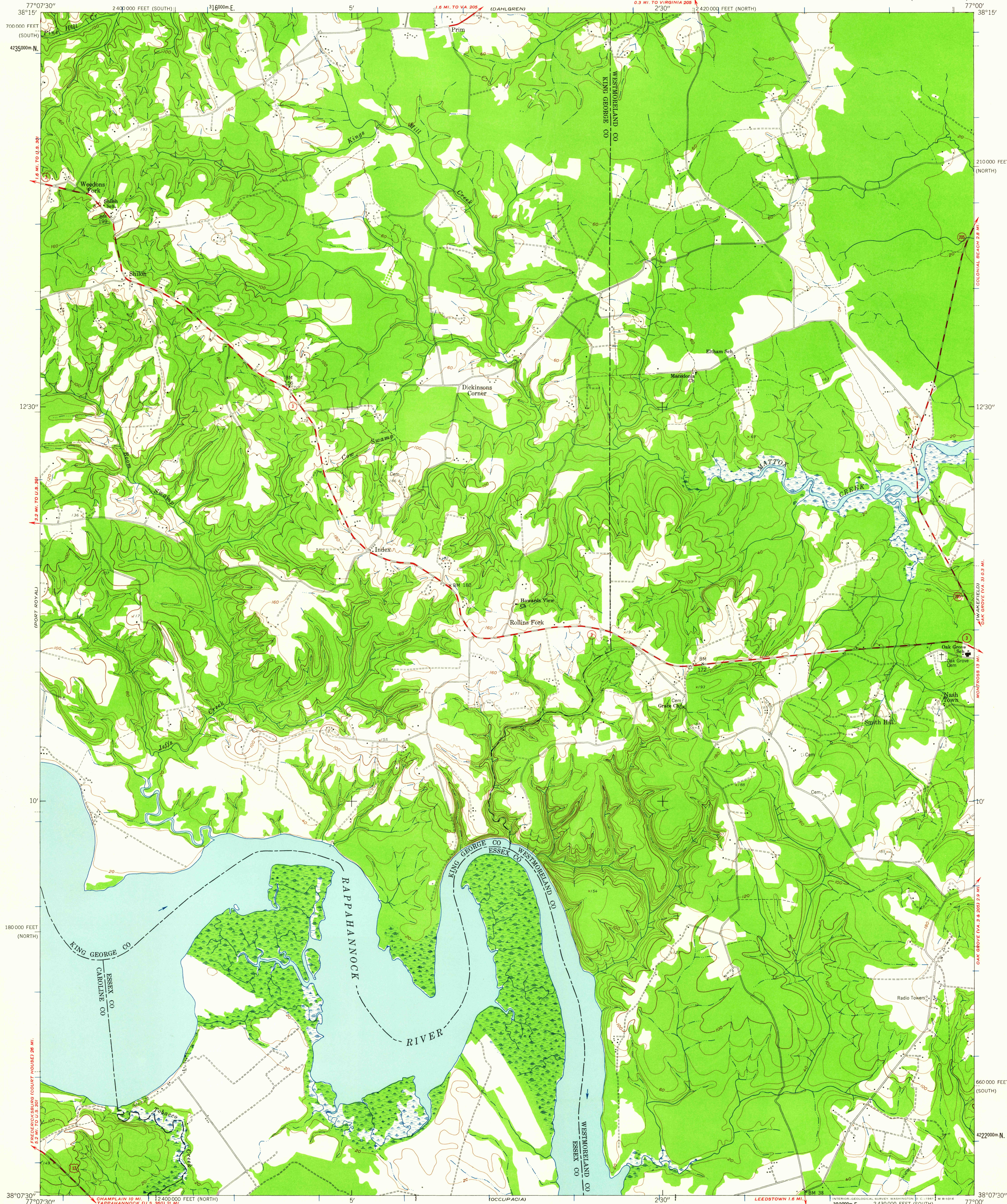


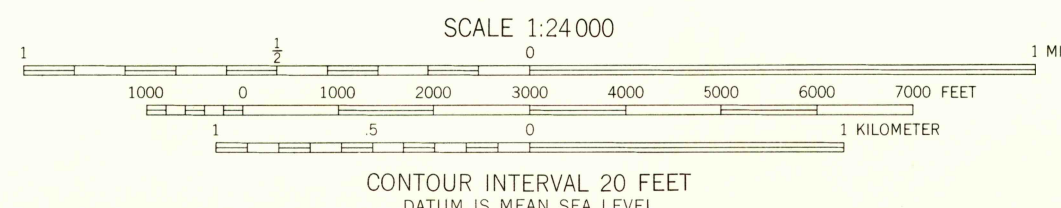
UNITED STATES
DEPARTMENT OF THE INTERIOR
GEOLOGICAL SURVEY

ROLLINS FORK QUADRANGLE
VIRGINIA
7.5 MINUTE SERIES (TOPOGRAPHIC)



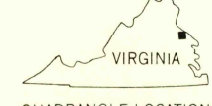
Mapped by the Army Map Service
Published for civil use by the Geological Survey
Control by USGS, USC&GS, USCE, and SCS
Topography from aerial photographs by photogrammetric methods and by plane-table surveys 1942.
Aerial photographs taken 1942.
Planimetric detail revised from aerial photographs taken 1946-1947. Field check 1949.
Polyconic projection. 1927 North American datum 10,000-foot grid based on Virginia coordinate system, north and south zones
1000-meter Universal Transverse Mercator grid ticks, zone 18, shown in blue

TRUE NORTH
MAGNETIC NORTH
APPROXIMATE MEAN DECLINATION, 1949



FOR SALE BY U. S. GEOLOGICAL SURVEY, WASHINGTON 25, D. C.
A FOLDER DESCRIBING TOPOGRAPHIC MAPS AND SYMBOLS IS AVAILABLE ON REQUEST

USGS
Historical File
Topographic Division



ROAD CLASSIFICATION
Medium-duty ——— Light-duty ———
Unimproved dirt ———
U.S. Route ——— State Route ———

U.S.G.S.
FILE COPY
TOPOGRAPHIC DIVISION

ROLLINS FORK, VA.
N3807.5-W7700/7.5
1949

2110