

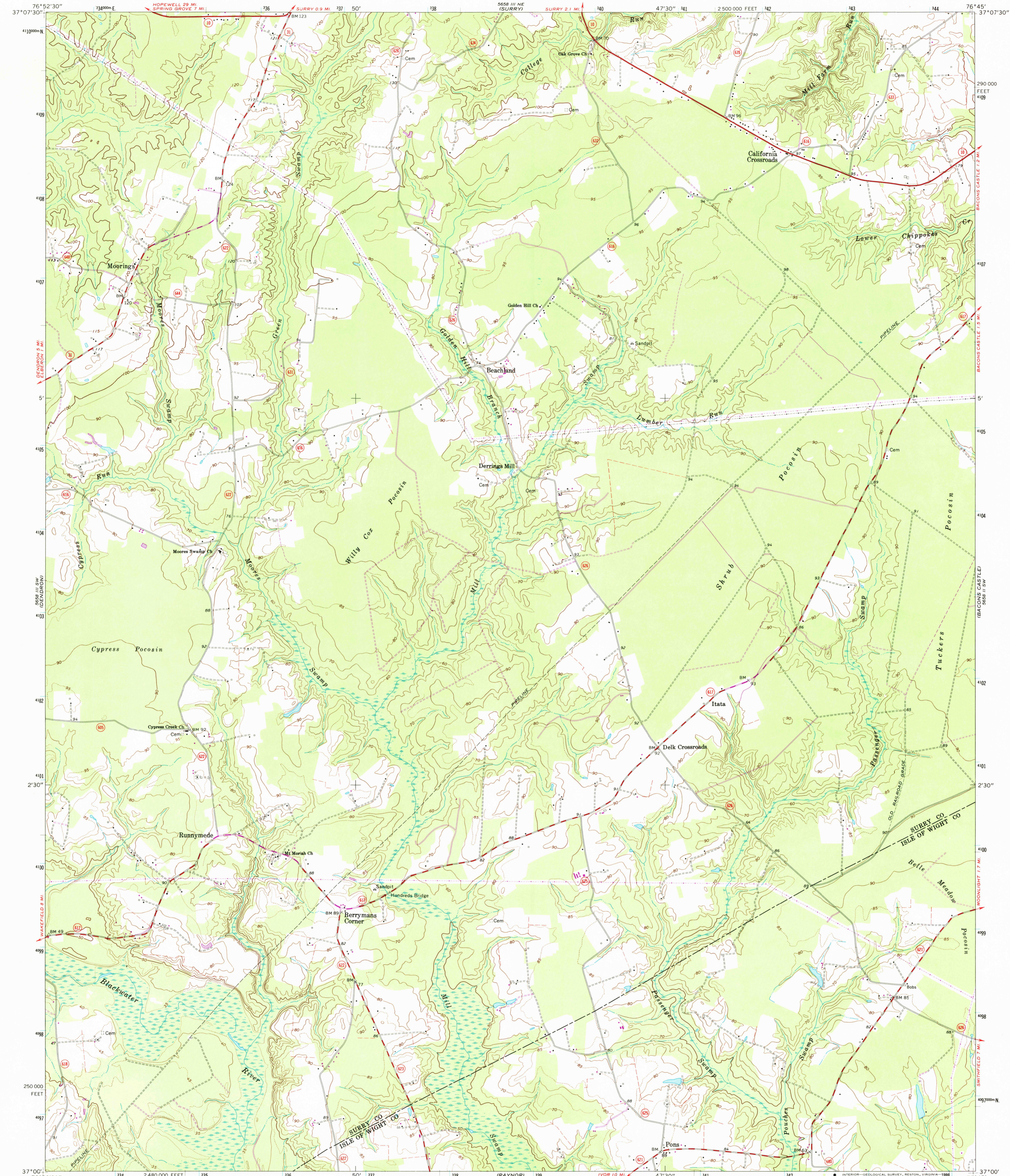
5658 III NE
CARR-40077

UNITED STATES
DEPARTMENT OF THE INTERIOR
GEOLOGICAL SURVEY

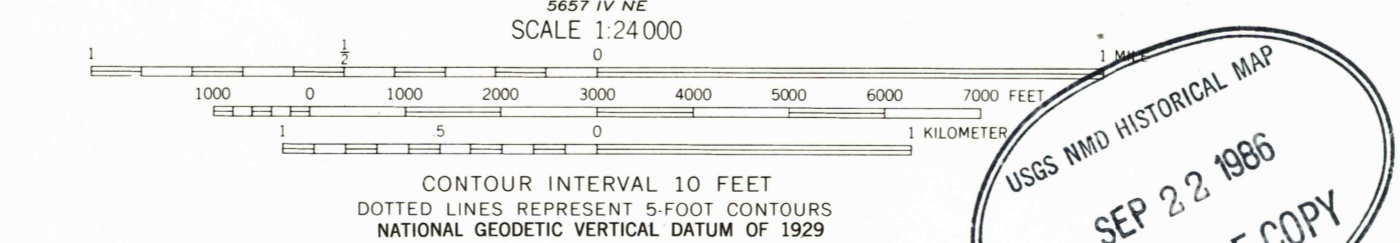
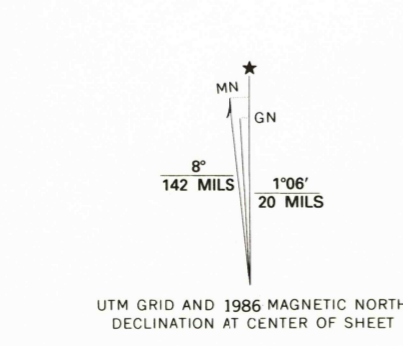
COMMONWEALTH OF VIRGINIA
DIVISION OF MINERAL RESOURCES

RUNNYMEDE QUADRANGLE
VIRGINIA
7.5 MINUTE SERIES (TOPOGRAPHIC)

5658 III NE
RPG-15LAND



Mapped, edited, and published by the Geological Survey
Control by USGS and USC&GS
Topography by photogrammetric methods from aerial photographs taken 1966. Field checked 1968
Supersedes USC&GS map dated 1954
Polyconic projection. 1927 North American datum
10,000-foot grid based on Virginia coordinate system, south zone
1000-meter Universal Transverse Mercator grid ticks, zone 18, shown in blue
Fine red dashed lines indicate selected fence and field lines where generally visible on aerial photographs. This information is unchecked
To place on the predicted North American Datum 1983, move the projection lines 11 meters south and 29 meters west as shown by dashed corner ticks



ROAD CLASSIFICATION
Primary highway, all weather, hard surface
Secondary highway, all weather, hard surface
Light-duty road, all weather, improved surface
Unimproved road, fair or dry weather
State Route

THIS MAP COMPLIES WITH NATIONAL MAP ACCURACY STANDARDS FOR SALE BY U. S. GEOLOGICAL SURVEY, RESTON, VIRGINIA 22092 AND VIRGINIA DIVISION OF MINERAL RESOURCES, CHARLOTTESVILLE, VIRGINIA 22903 A FOLDER DESCRIBING TOPOGRAPHIC MAPS AND SYMBOLS IS AVAILABLE ON REQUEST

Revisions shown in purple compiled in cooperation with Commonwealth of Virginia agencies from aerial photographs taken 1982 and other source data. This information not field checked. Map edited 1986

RUNNYMEDE, VA.
37076-A7-F-024
1968
PHOTOREVISED 1986
DMA 5658 III SE - SERIES V834