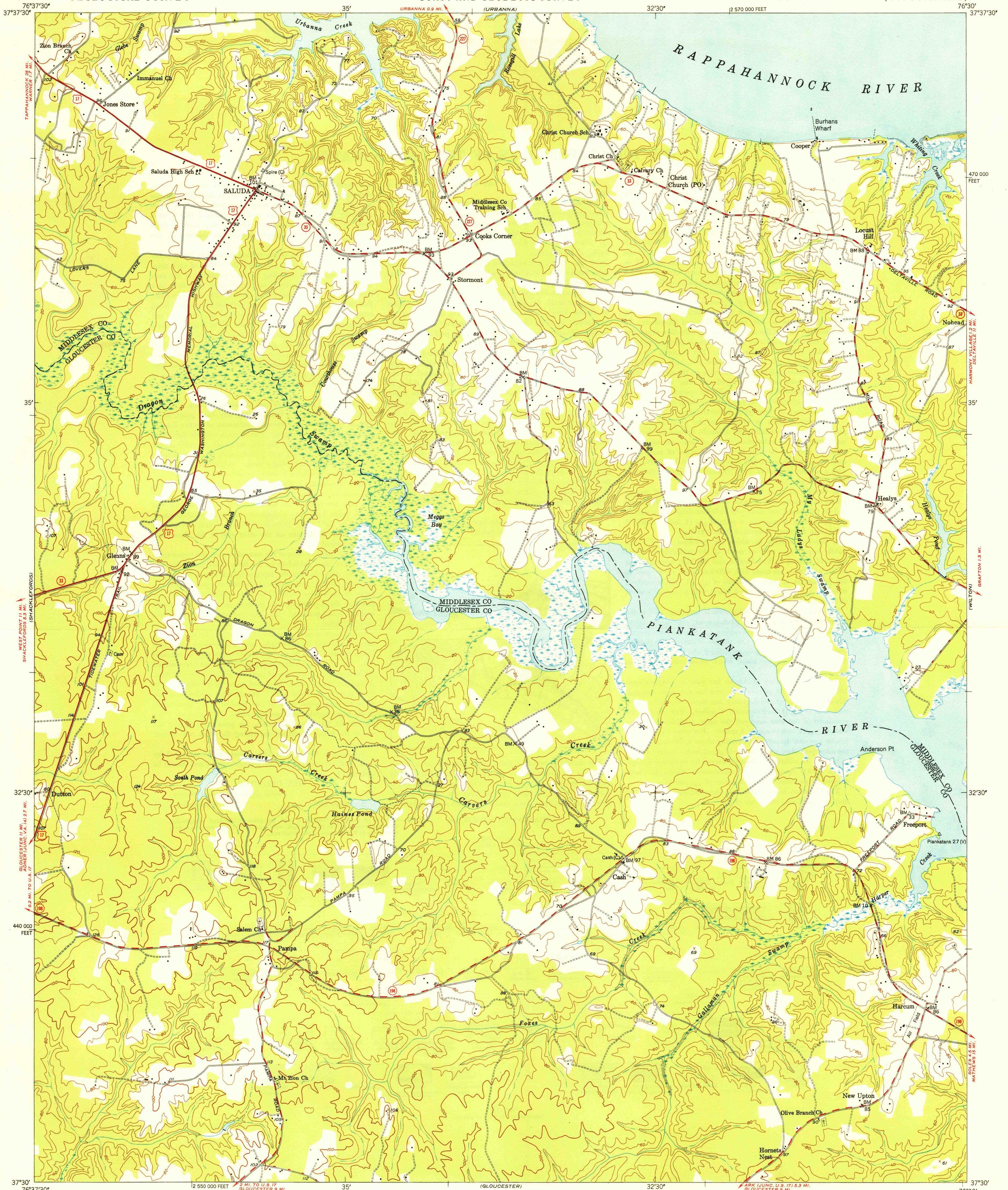


U.S.G.S. FILE COPY Inspection and Editing.

UNITED STATES DEPARTMENT OF THE INTERIOR GEOLOGICAL SURVEY

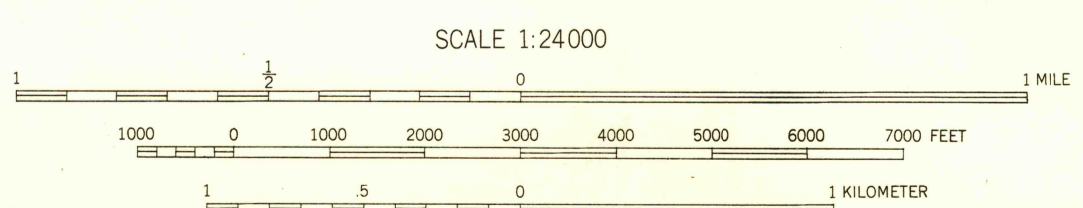
UNITED STATES DEPARTMENT OF COMMERCE COAST AND GEODETIC SURVEY

SALUDA QUADRANGLE VIRGINIA 7.5 MINUTE SERIES (TOPOGRAPHIC)



Mapped by U.S. Coast & Geodetic Survey Edited and published by the Geological Survey Control by USC&GS(C), USGS and Virginia Fisheries Commission (V) Topography from aerial photographs by Reading plotter Aerial photographs taken 1944, field check 1946 Polyconic projection, 1927 North American datum 10,000-foot grid based on Virginia coordinate system, south zone. No distinction is made between dwellings, barns, commercial and industrial buildings

TRUE NORTH MAGNETIC NORTH APPROXIMATE MEAN DECLINATION, 1946



CONTOUR INTERVAL 20 FEET DATUM IS MEAN SEA LEVEL SHORELINE SHOWN REPRESENTS THE APPROXIMATE LINE OF MEAN HIGH WATER THE AVERAGE RANGE OF TIDE IS APPROXIMATELY 2 FEET

THIS MAP COMPLIES WITH NATIONAL MAP ACCURACY STANDARDS FOR SALE BY U. S. GEOLOGICAL SURVEY, WASHINGTON 25, D. C.

USGS Historical File Topographic Division ROAD CLASSIFICATION: Heavy-duty ALL WEATHER ROADS (4 LANE IS LANE), Medium-duty (2 LANE IS LANE), Loose-surface, graded, or narrow hard-surface, U.S. Route, State Route, DRY WEATHER ROADS, Improved dirt, Unimproved dirt

WOODLAND: Woods-Brushwood, Orchard

U.S.G.S. FILE COPY Inspection and Editing.

SALUDA, VA. N3730-W7630/7.5 EDITION OF 1949

OCT 26 1949 2100