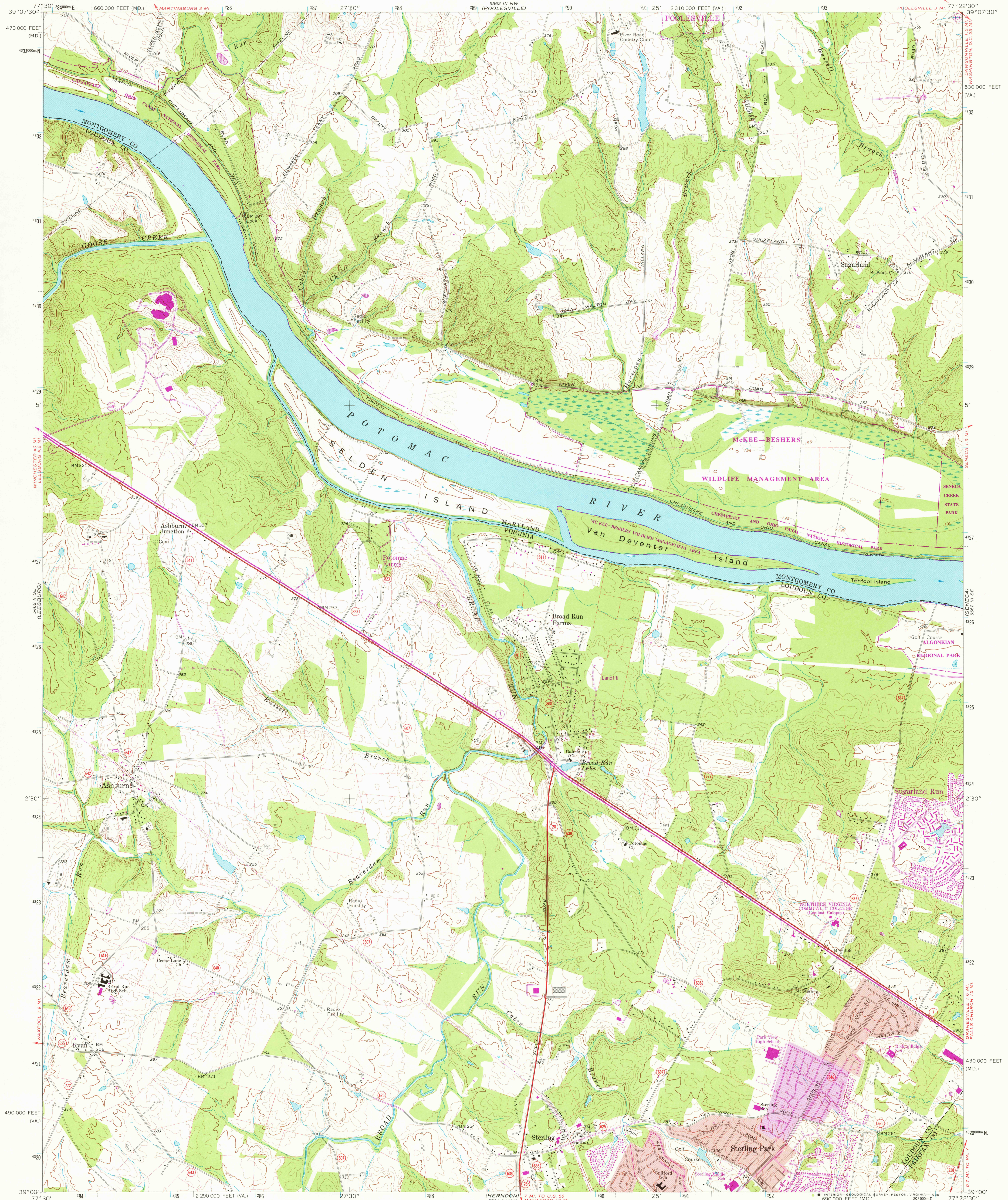
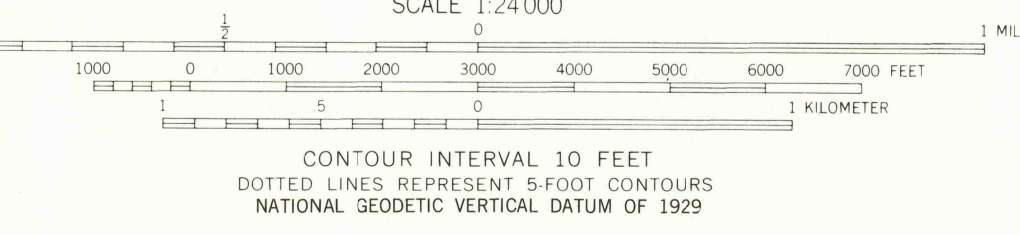
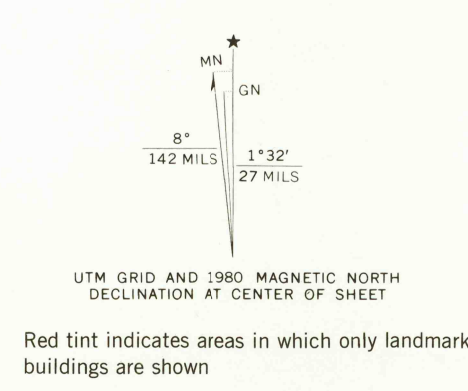


UNITED STATES
DEPARTMENT OF THE INTERIOR
GEOLOGICAL SURVEY

STERLING QUADRANGLE
VIRGINIA—MARYLAND
7.5 MINUTE SERIES (TOPOGRAPHIC)



Mapped, edited, and published by the Geological Survey
Control by USGS, USC&GS, and USCE
Topography by photogrammetric methods from aerial photographs
taken 1963. Field checked 1968.
Supersedes Army Map Service map dated 1952.
Polyconic projection. 1927 North American datum
10,000-foot grid based on Virginia coordinate system,
north zone, and Maryland coordinate system.
1000-meter Universal Transverse Mercator grid ticks,
zone 18, shown in blue.
To place on the predicted North American Datum 1983
move the projection lines 8 meters south and
25 meters west as shown by dashed corner ticks.
There may be private inholdings within the boundaries of
the National or State reservations shown on this map.
Fine red dashed lines indicate selected fence and field lines where
generally visible on aerial photographs. This information is unchecked.



THIS MAP COMPLIES WITH NATIONAL MAP ACCURACY STANDARDS
FOR SALE BY U. S. GEOLOGICAL SURVEY, RESTON, VIRGINIA 22092
AND VIRGINIA DIVISION OF MINERAL RESOURCES, CHARLOTTESVILLE, VIRGINIA 22903
A FOLDER DESCRIBING TOPOGRAPHIC MAPS AND SYMBOLS IS AVAILABLE ON REQUEST

Revisions shown in purple and woodland compiled in cooperation
with Commonwealth of Virginia agencies from aerial
photographs taken 1977 and other source data. This
information not field checked. Map edited 1980.
Purple tint indicates extension of urban areas

USGS
Historical File
Topographic Division

ROAD CLASSIFICATION

Primary highway, all weather, hard surface	Light-duty road, all weather, improved surface
Secondary highway, all weather, hard surface	Unimproved road, fair or dry weather
	State Route

SEP 10 1980

STERLING, VA.—MD.

N 3900—W 7722.5/7.5

1968
PHOTOREVISED 1980
DMA 5562 III SW—SERIES V834