

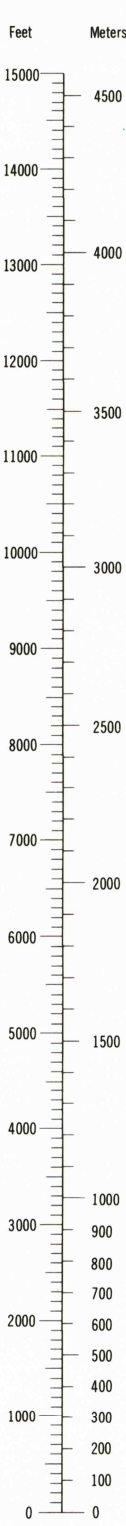
UNITED STATES
DEPARTMENT OF THE INTERIOR
GEOLOGICAL SURVEY

COMMONWEALTH OF VIRGINIA
DIVISION OF MINERAL RESOURCES

STRATFORD HALL QUADRANGLE
VIRGINIA-MARYLAND
7.5 MINUTE SERIES (TOPOGRAPHIC-BATHYMETRIC)



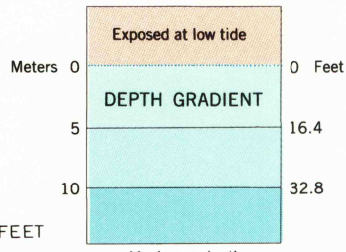
CONVERSION
SCALES



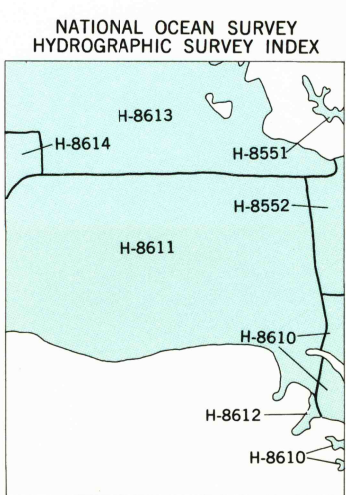
| Feet | Meters |
|------|--------|
| 1 | 0.3048 |
| 2 | 0.6096 |
| 3 | 0.9144 |
| 4 | 1.2192 |
| 5 | 1.5240 |
| 6 | 1.8288 |
| 7 | 2.1336 |
| 8 | 2.4384 |
| 9 | 2.7432 |
| 10 | 3.0480 |

To convert feet to meters
multiply by 0.3048

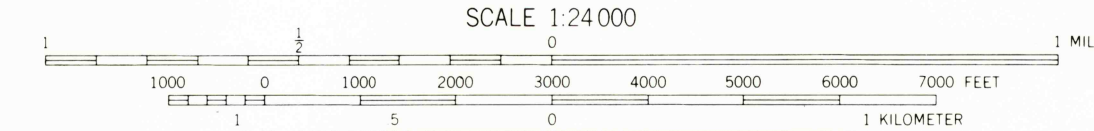
To convert meters to feet
multiply by 3.2808



Mapped, edited, and published by the Geological Survey
and the National Ocean Survey
Control by USGS and NOS/NOAA
Topography by photogrammetric methods from aerial photographs taken
1967. Field checked 1968
Bathymetry compiled by the National Ocean Survey from tide-coordinated
hydrographic surveys. This information is not intended for navigational
purposes
Mean low water (dotted) line and mean high water (heavy solid) line
compiled by NOS from tide-coordinated photographs. Apparent
shoreline (outer edge of vegetation) shown by light solid line
Polyconic projection, 10,000-foot grid ticks based on Virginia
coordinate system, north zone, and Maryland coordinate system
1000-meter Universal Transverse Mercator grid, zone 18
1927 North American Datum
To place on the predicted North American Datum 1983 move the
projection lines 9 meters south and 27 meters west as shown by
dashed corner ticks
Fine red dashed lines indicate selected fence and field lines which
generally visible on aerial photographs. This information is unchecked
Revisions shown in purple and woodland compiled in cooperation with
Commonwealth of Virginia agencies from aerial photographs taken
1973 and other sources. This information not field checked
Map edited 1973

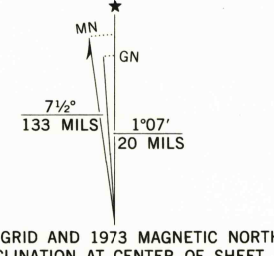


| Survey Number | Survey Date | Survey Scale | Survey Line Spacing (Naut. Miles) |
|---------------|-------------|--------------|-----------------------------------|
| H-8551 | 1960 | 1:10,000 | 03-06 |
| H-8552 | 1960 | 1:10,000 | 02-07 |
| H-8610 | 1960-61 | 1:10,000 | 02-07 |
| H-8611 | 1961 | 1:10,000 | 01-05 |
| H-8612 | 1961 | 1:10,000 | 02-05 |
| H-8613 | 1961 | 1:10,000 | 01-05 |
| H-8614 | 1961 | 1:10,000 | 02-06 |



CONTOUR INTERVAL 10 FEET
DASHED LINES REPRESENT 5-FOOT CONTOURS
NATIONAL GEODETIC VERTICAL DATUM OF 1929
BATHYMETRIC CONTOUR INTERVAL 1 METER WITH SUPPLEMENTARY
0.5 METER CONTOURS-DATUM IS MEAN LOW WATER
THE RELATIONSHIP BETWEEN THE TWO DATUMS IS VARIABLE
THE MEAN RANGE OF TIDE IS APPROXIMATELY 0.5 METER

BASE MAP COMPLIES WITH NATIONAL MAP ACCURACY STANDARDS
BATHYMETRIC SURVEY DATA COMPLIES WITH INTERNATIONAL HYDROGRAPHIC
ORGANIZATION (IHO) SPECIAL PUBLICATION 44 ACCURACY STANDARDS
AND/OR STANDARDS USED AT THE DATE OF THE SURVEY
FOR SALE BY U. S. GEOLOGICAL SURVEY, DENVER, COLORADO 80225, OR RESTON, VIRGINIA 22092
NATIONAL OCEAN SERVICE, ROCKVILLE, MARYLAND 20862
AND VIRGINIA DIVISION OF MINERAL RESOURCES, CHARLOTTESVILLE, VIRGINIA 22903
A FOLDER DESCRIBING TOPOGRAPHIC MAPS AND SYMBOLS IS AVAILABLE ON REQUEST



ROAD CLASSIFICATION
Primary highway, hard surface
Secondary highway, hard surface
Light-duty road, hard or improved surface
Unimproved road
Interstate Route
U. S. Route
State Route

STRATFORD HALL, VA.-MD.
N3807.3-W7645/7.5
1968
PHOTOREVISED 1973
BATHYMETRY ADDED 1982
DMA 5660 III NE-SERIES 8834

