

(SALUDA)

UNITED STATES
DEPARTMENT OF THE INTERIOR
GEOLOGICAL SURVEY

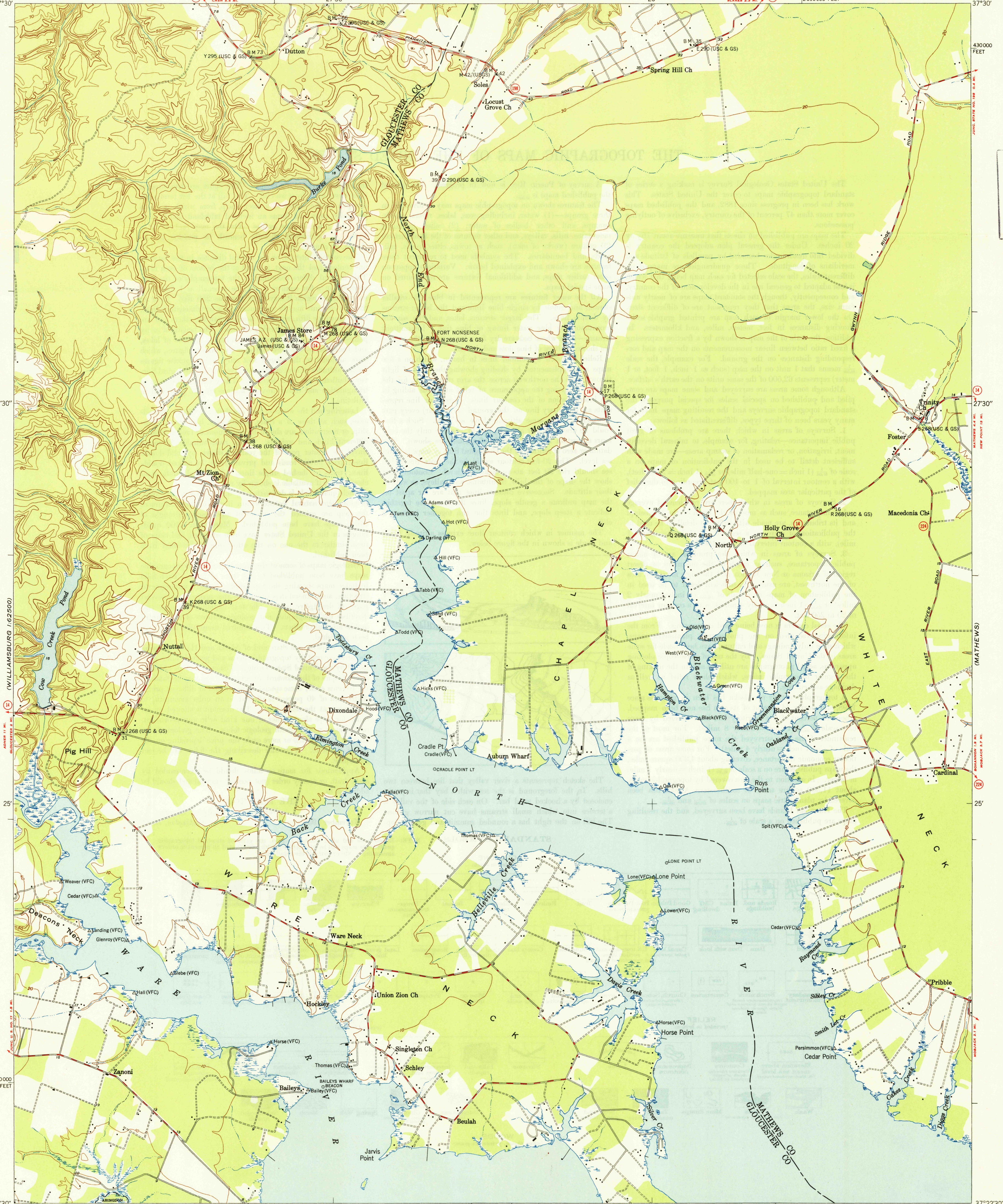
UNITED STATES
DEPARTMENT OF COMMERCE
COAST AND GEODETIC SURVEY
(WILTON)

WARE NECK QUADRANGLE
VIRGINIA
7.5 MINUTE SERIES (TOPOGRAPHIC)

(DELTAVILLE)

U. S. G. S.
FILE COPY
Inspection and Editing.

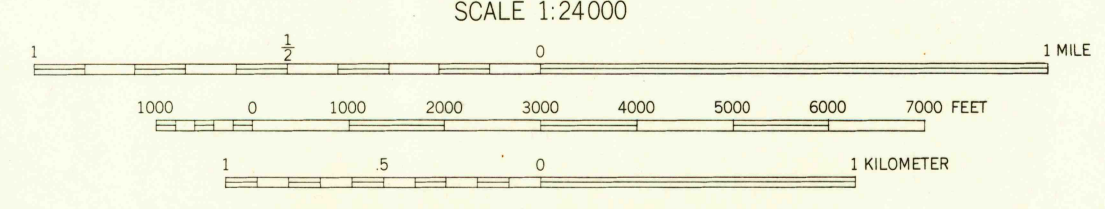
U. S. G. S.
FILE COPY
Inspection and Editing.



(WILLIAMSBURG 1:62500)

Mapped by U. S. Coast and Geodetic Survey
Edited and published by Geological Survey
Control by U. S. G. S., U. S. C. and G. S.
and Commission of Fisheries of Virginia
Topography by stereophotogrammetric methods (Multiplex)
Aerial photographs taken in 1942. Field check 1944-1946
Polyconic projection, 1927 North American Datum
10000 foot grid based on Virginia Coordinate System,
South Zone
Barns are also shown

APPROXIMATE MEAN
DECLINATION, 1946



CONTOUR INTERVAL 10 FEET
DATUM IS MEAN SEA LEVEL
Shoreline shown represents the approximate line of mean high water.
The average range of tide is approximately 2 feet
THIS MAP COMPLIES WITH NATIONAL MAP ACCURACY STANDARDS

FOR SALE BY U. S. GEOLOGICAL SURVEY, WASHINGTON 25, D. C.

USGS
Historical File
Topographic Division

ROAD CLASSIFICATION
USC & GS T-8330
HARD-SURFACE ALL WEATHER ROADS
Heavy-duty
Medium-duty
Loose-surface or narrow hard-surface
DRY WEATHER ROADS
Improved dirt
Unimproved dirt

U. S. G. S.
FILE COPY
Inspection and Editing.

WARE NECK, VA.
N3722.5-W7622.5/7.5
PRINTED 1948

AUG 27 1946

3170

(NEW POINT COMFORT)