

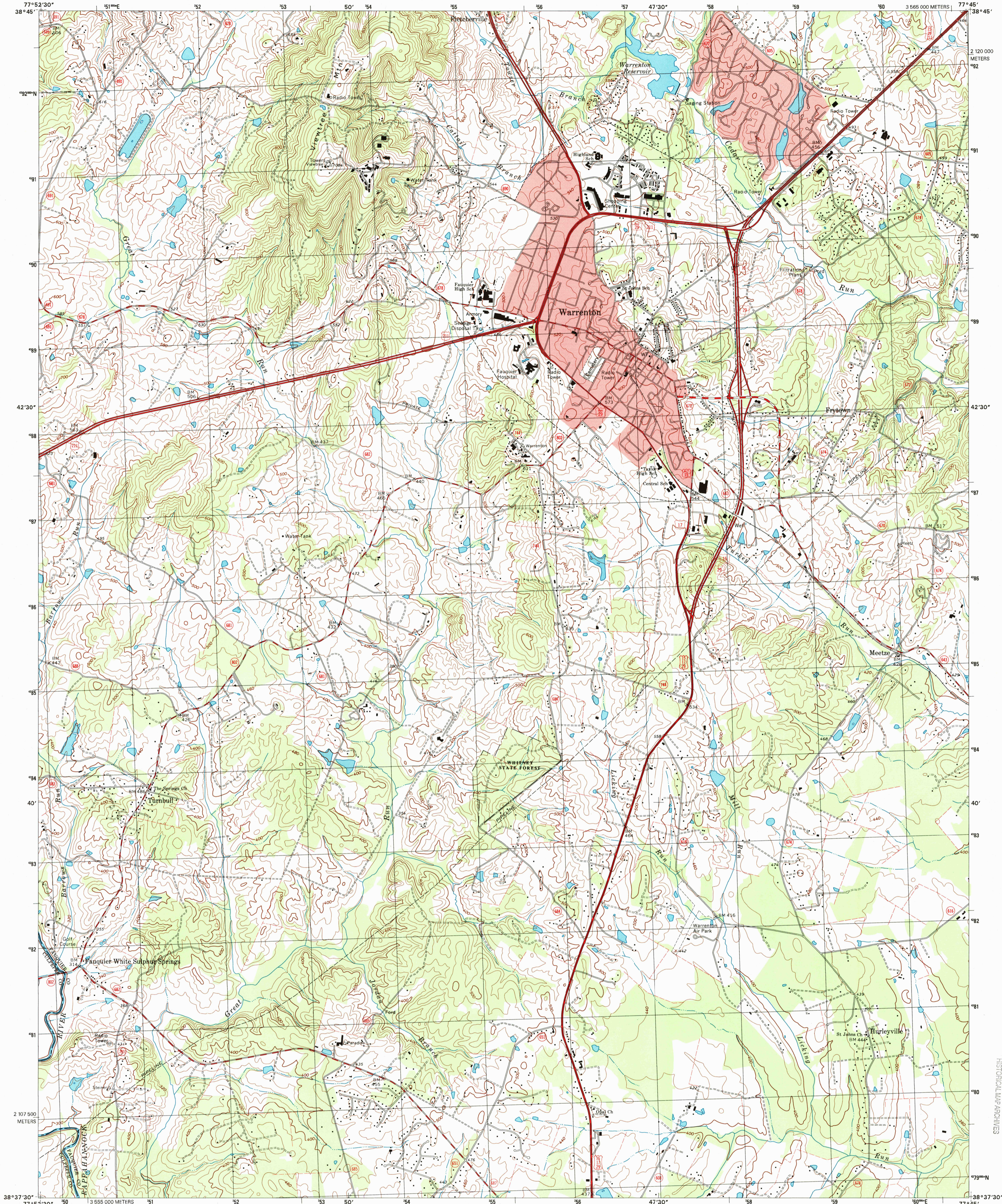


U.S. DEPARTMENT OF THE INTERIOR
U.S. GEOLOGICAL SURVEY

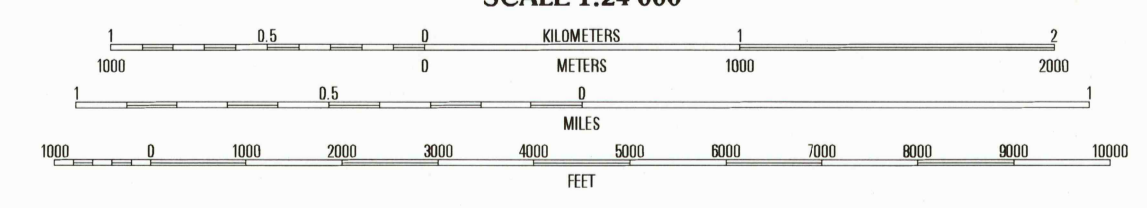
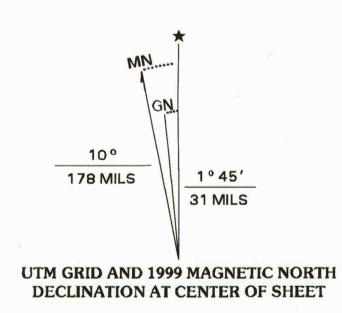


COMMONWEALTH OF VIRGINIA
DEPARTMENT OF TRANSPORTATION
DEPARTMENT OF MINES, MINERALS, AND ENERGY

WARRENTON QUADRANGLE
VIRGINIA
7.5-MINUTE SERIES (TOPOGRAPHIC)



Produced by the United States Geological Survey in cooperation with Virginia Department of Transportation and Mines, Minerals, and Energy
Topography compiled 1966. Planimetry derived from imagery taken 1994 and other sources. Survey control current as of 1966
North American Datum of 1983 (NAD 83). Projection and 1 000-meter grid: Universal Transverse Mercator, zone 18
2 500-meter ticks: Virginia Coordinate System of 1983 (north zone)
North American Datum of 1927 (NAD 27) is shown by dashed corner ticks. The values of the shift between NAD 83 and NAD 27 for 7.5-minute intersections are obtainable from National Geodetic Survey NADCON software
There may be private inholdings within the boundaries of the National or State reservations shown on this map
Landmark buildings verified 1966



ROAD CLASSIFICATION

Primary highway hard surface	Light-duty road, hard or improved surface
Secondary highway hard surface	Unimproved road
Interstate Route	U.S. Route
	State Route

1	2	3	1 Orlean
4	5	4 Jefferson	2 Marshall
6	7	5 Carters	3 Thoroughfare Gap
		6 Brandy Station	4 Jefferson
		7 Remington	5 Carters
		8 Midland	6 Brandy Station

ADJOINING 7.5' QUADRANGLE NAMES

WARRENTON, VA
1994
NIMA 5461 III NE-SERIES V834

RECEIVED
OCT 31 1999
USGS M&D
HISTORICAL MAP ARCHIVES

