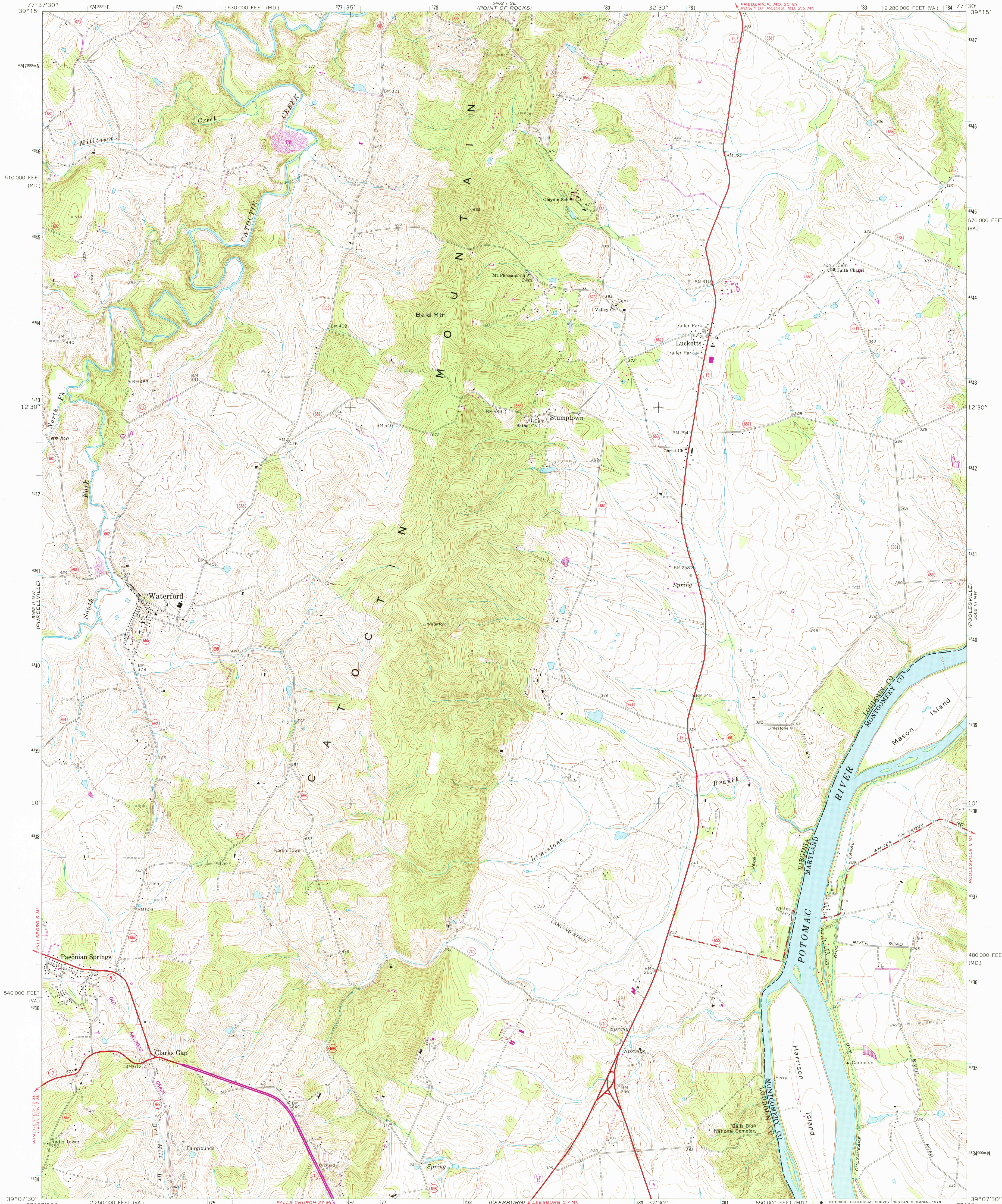


UNITED STATES  
DEPARTMENT OF THE INTERIOR  
GEOLOGICAL SURVEY

COMMONWEALTH OF VIRGINIA  
DIVISION OF MINERAL RESOURCES  
JAMES L. CALVER, STATE GEOLOGIST

WATERFORD QUADRANGLE  
VIRGINIA-MARYLAND  
7.5 MINUTE SERIES (TOPOGRAPHIC)



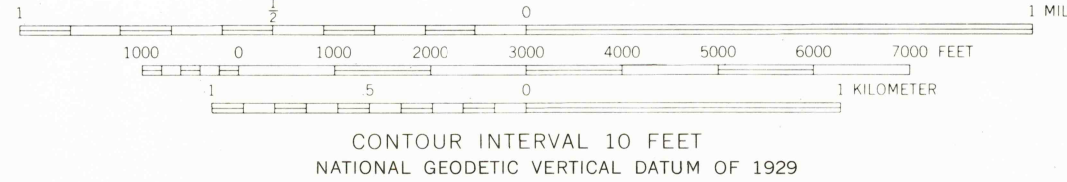
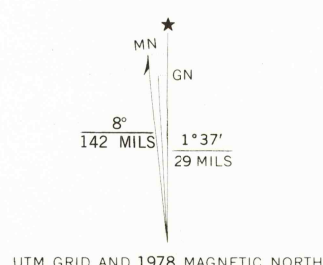
Mapped, edited, and published by the Geological Survey  
Control by USGS and USC&GS

Topography from photogrammetric methods from aerial  
photographs taken 1965 and 1969. Field checked 1970  
Supersedes Army Map Service map dated 1952

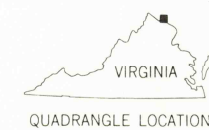
Polycyclic projection. 1927 North American datum  
10,000-foot grids based on Virginia coordinate system,  
north zone, and Maryland coordinate system  
1000-meter Universal Transverse Mercator grid ticks,  
zone 18, shown in blue

Fine red dashed lines indicate selected fence and field lines where  
generally visible on aerial photographs. This information is unchecked

Revisions shown in purple compiled in cooperation with Commonwealth  
of Virginia agencies from aerial photographs taken 1977 and other  
source data. This information not field checked. Map edited 1978



THIS MAP COMPLIES WITH NATIONAL MAP ACCURACY STANDARDS  
FOR SALE BY U.S. GEOLOGICAL SURVEY, RESTON, VIRGINIA 22092  
AND VIRGINIA DIVISION OF MINERAL RESOURCES, CHARLOTTESVILLE, VIRGINIA 22903  
A FOLDER DESCRIBING TOPOGRAPHIC MAPS AND SYMBOLS IS AVAILABLE ON REQUEST



ROAD CLASSIFICATION	
Primary highway, all weather, hard surface	Light-duty road, all weather, improved surface
Secondary highway, all weather, hard surface	Unimproved road, fair or dry weather
U.S. Route	State Route

USGS  
Historical File  
Topographic Division

WATERFORD, VA.-MD.  
N3907.5-W7730/7.5  
1970  
PHOTOREVISED 1978  
AMS 5462 II NE-SERIES V834

3690  
JAN 10 1979