

5462 II SW
5462 II SW
(HARRIS FERRY)

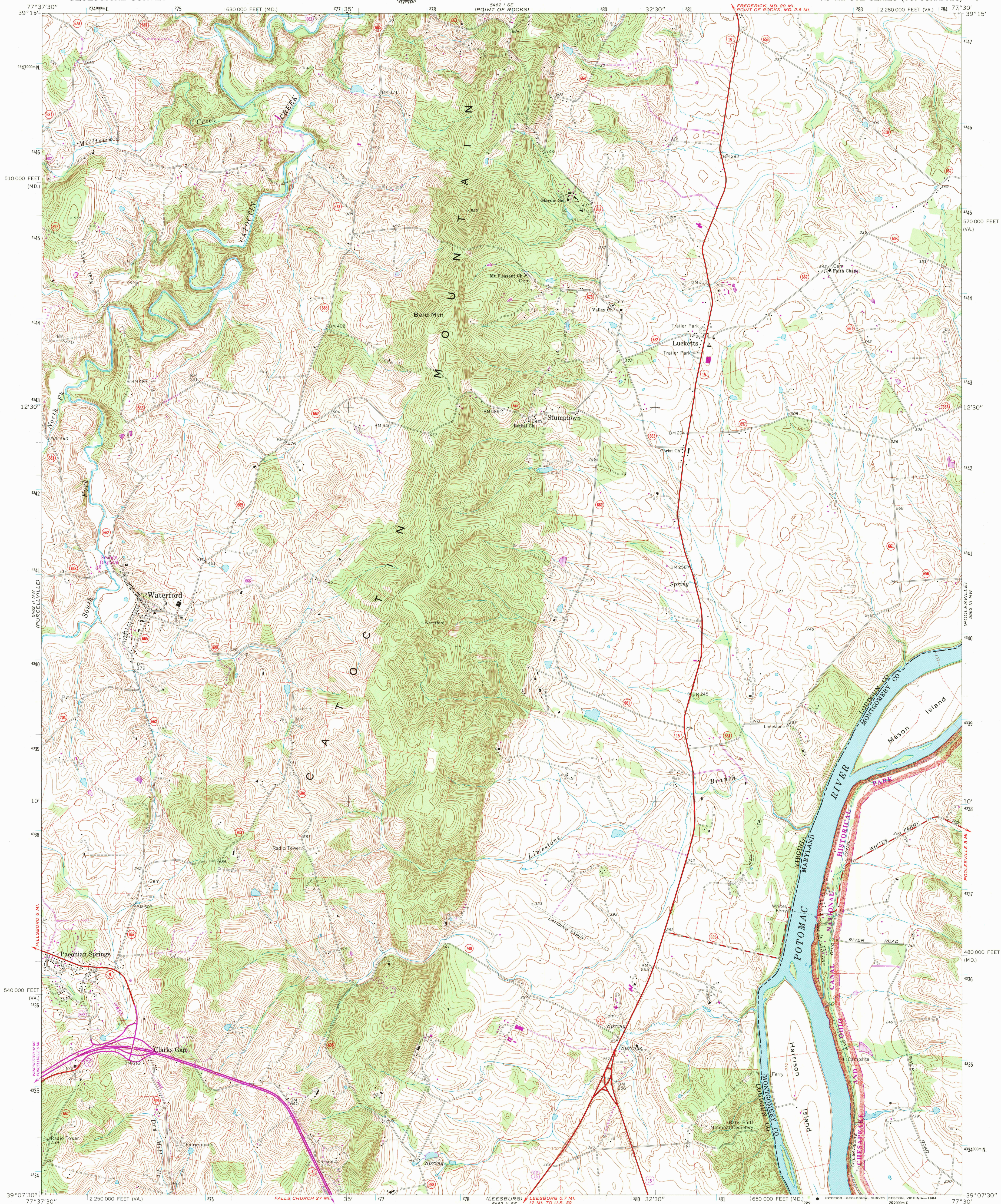
UNITED STATES
DEPARTMENT OF THE INTERIOR
GEOLOGICAL SURVEY



COMMONWEALTH OF VIRGINIA
DIVISION OF MINERAL RESOURCES

WATERFORD QUADRANGLE
VIRGINIA-MARYLAND
7.5 MINUTE SERIES (TOPOGRAPHIC)

5462 IV SW
5462 IV SW
(BUCKEYSTOWN)

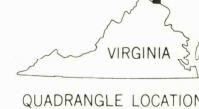


Mapped, edited, and published by the Geological Survey
Control by USGS and NOS/NOAA
Topography by photogrammetric methods from aerial photographs
taken 1965 and 1969. Field checked 1970
Supersedes Army Map Service map dated 1952
Polyconic projection. 10,000-foot grid ticks based on Virginia
coordinate system, north zone, and Maryland coordinate system
1000-meter Universal Transverse Mercator grid ticks,
zone 18, shown in blue
1927 North American Datum
To place on the predicted North American Datum 1983
move the projection lines 8 meters south and
25 meters west as shown by dashed corner ticks
Fine red dashed lines indicate selected fence and field lines where
generally visible on aerial photographs. This information is unchecked
There may be private inholdings within the boundaries of
the National or State reservations shown on this map

UTM GRID AND 1984 MAGNETIC NORTH
DECLINATION AT CENTER OF SHEET

SCALE 1:24,000
CONTOUR INTERVAL 10 FEET
NATIONAL GEODETIC VERTICAL DATUM OF 1929

THIS MAP COMPLIES WITH NATIONAL MAP ACCURACY STANDARDS
FOR SALE BY U. S. GEOLOGICAL SURVEY, RESTON, VIRGINIA 22092
AND VIRGINIA DIVISION OF MINERAL RESOURCES, CHARLOTTESVILLE, VIRGINIA 22903
A FOLDER DESCRIBING TOPOGRAPHIC MAPS AND SYMBOLS IS AVAILABLE ON REQUEST



Revisions shown in purple and woodland compiled in cooperation with
Commonwealth of Virginia agencies from aerial photographs
taken 1981 and other sources. This information not field checked
Map edited 1984

ROAD CLASSIFICATION
Primary highway, all weather, hard surface
Secondary highway, all weather, hard surface
Light-duty road, all weather, improved surface
Unimproved road, fair or dry weather
U. S. Route
State Route

WATERFORD, VA. - MD.
39077-B5-TF-024

1970
PHOTOREVISED 1984
DMA 5462 II NE-SERIES V834

RETURN TO:
USGS AND HISTORICAL MAP ARCHIVES