

(Hansonville)

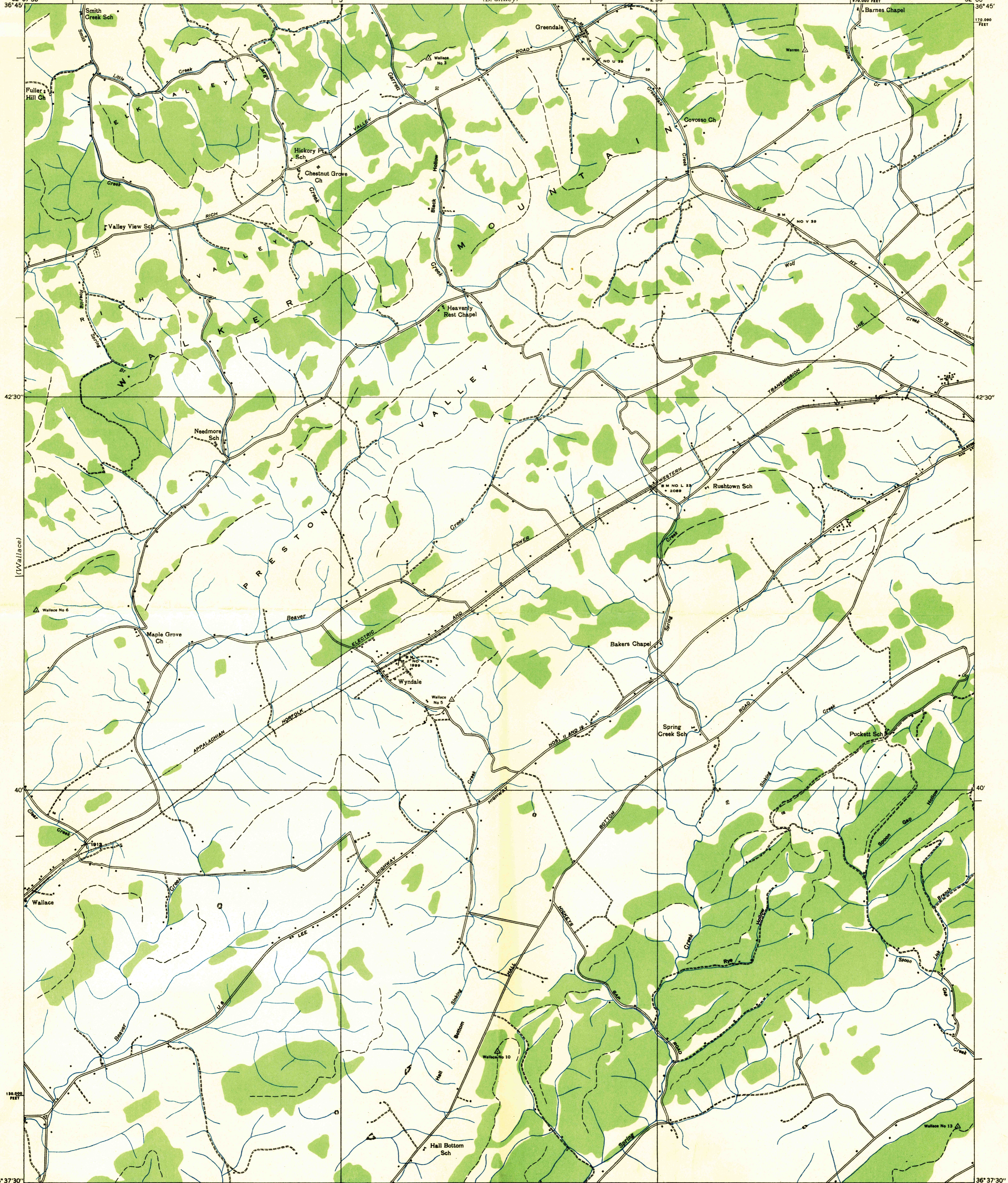
DEPARTMENT OF THE INTERIOR  
U. S. GEOLOGICAL SURVEY

TENNESSEE VALLEY AUTHORITY  
ARTHUR E. MORGAN, CHAIRMAN AND CHIEF ENGINEER  
CARL A. BOCK, ASSISTANT CHIEF ENGINEER

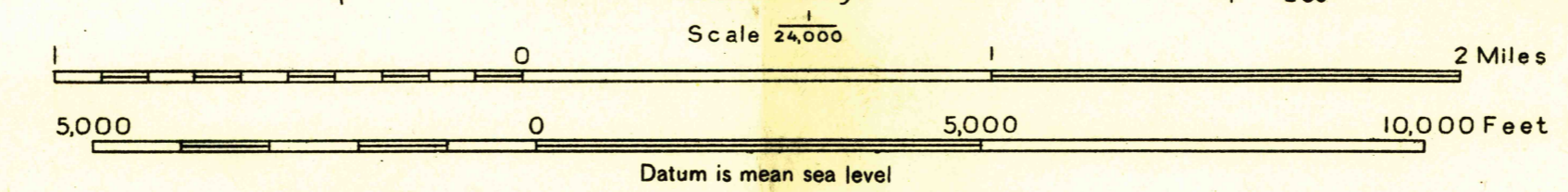
Advance sheet.  
Subject to correction.

VIRGINIA  
(WASHINGTON COUNTY)  
WYNDALE QUADRANGLE  
206-III NE

(Hayters Gap)



Albert Pike, Division Engineer  
Compiled by U. S. Geological Survey from aerial photographs  
Control by U. S. Geological Survey and U. S. Coast and Geodetic Survey  
Field examination in 1934



Polyconic projection, 1927 North American datum  
10,000 foot grid based on Virginia  
rectangular coordinate system

Ridge line  
Trail  
Sinks

APPROXIMATE MEAN  
MAGNETIC NORTH  
DECLINATION, 1984

WYNDALE, VA.  
206-III NE

(7 1/2 Bristol)

(Shady Valley)