

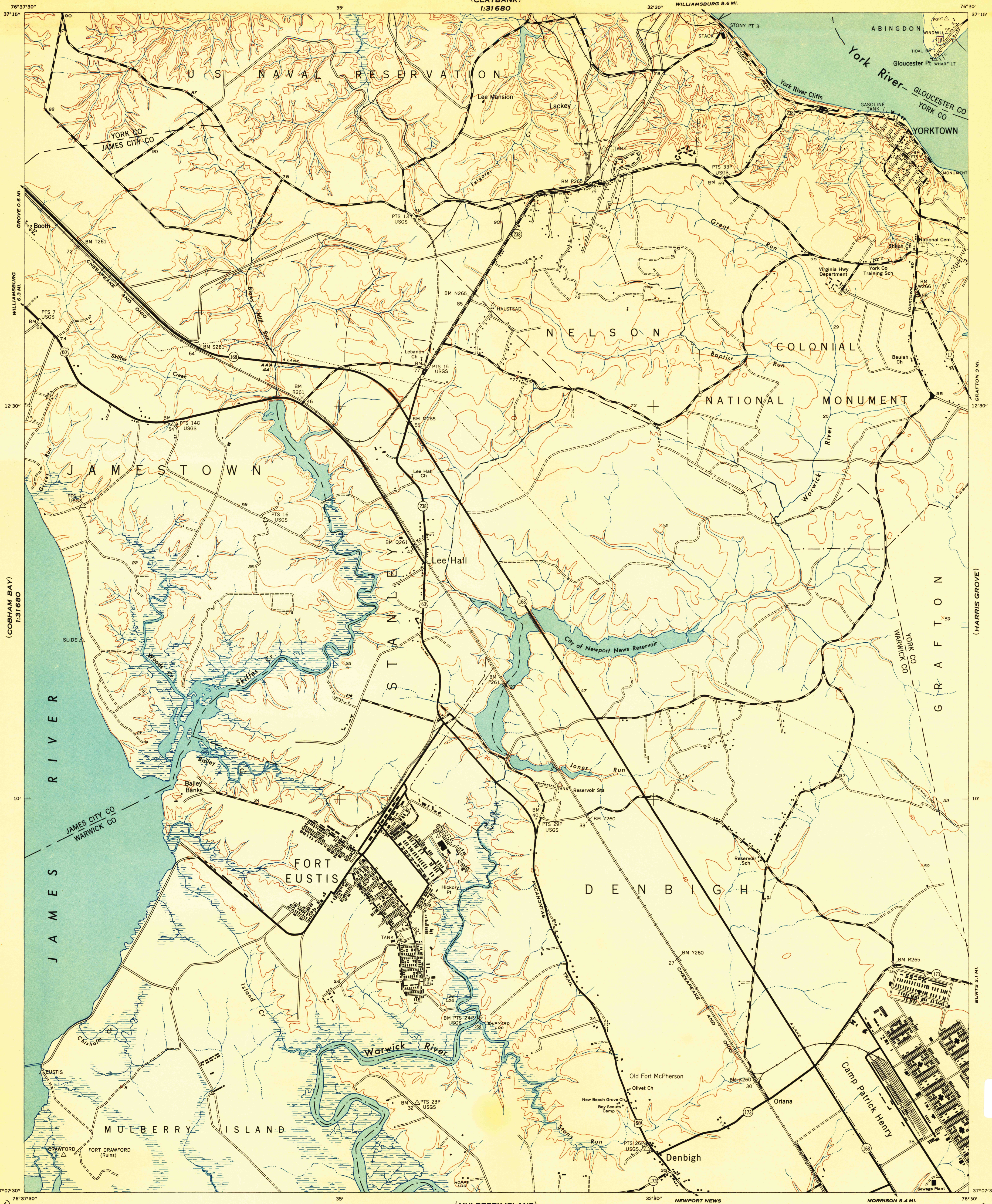
VIRGINIA

WAR DEPARTMENT
CORPS OF ENGINEERS, U. S. ARMY

YORKTOWN QUADRANGLE
7½-MINUTE SERIES

(CLAYBANK)
1:31680

(ACHILLES)
1:31680



(BACONS CASTLE)
1:31680

(MORRISON)

Map by the U. S. Coast and Geodetic Survey under the direction of the Chief of Engineers, U. S. Army, 1943.
Control by U.S.G.S. and U.S.C. & G.S.
Planimetry by U. S. C. & G. S. from 1942 air photographs.
Planetable topography and field edit by U. S. C. & G. S., 1944.
Polyconic projection, North American datum of 1927.
Recoverable horizontal control stations of less than third order accuracy are shown by circles.

ROAD CLASSIFICATION 1944

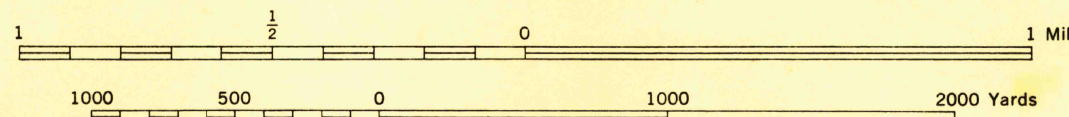
Dependable hard-surface, heavy-duty road.	Loose-surface graded, dry-weather road.	U. S. route 74
Secondary, hard-surface, all-weather road.	Dirt road.	State route 26

More than two lanes indicated by note along road with tick at point of change. 3 LANE 4 LANE

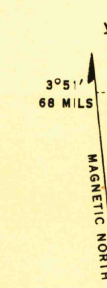
THIS MAP COMPLIES WITH THE NATIONAL STANDARD MAP ACCURACY REQUIREMENTS

(MULBERRY ISLAND)

SCALE 1:24,000



CONTOUR INTERVAL 20 FEET
DATUM IS MEAN SEA LEVEL



WOODLAND CLASSIFICATION

Dense woodland	Dense brush
Scattered brush and trees	Orchard
Marsh or swamp	Low ground, intermittently flooded

APPROXIMATE MEAN DECLINATION 1943
NO ANNUAL MAGNETIC CHANGE

YORKTOWN, VA.
N3707.5-W7630.7.5

EDITION OF 1944

