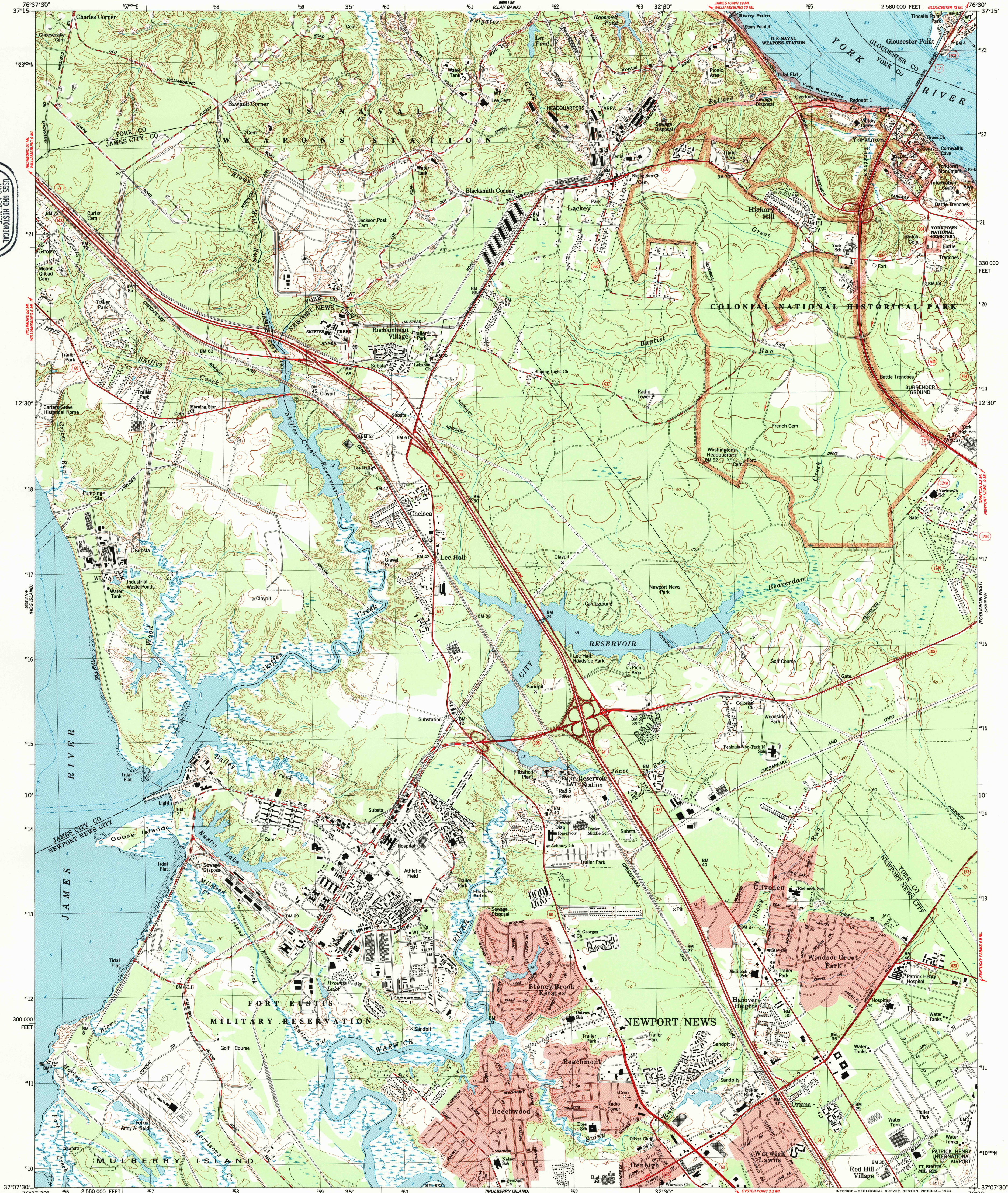
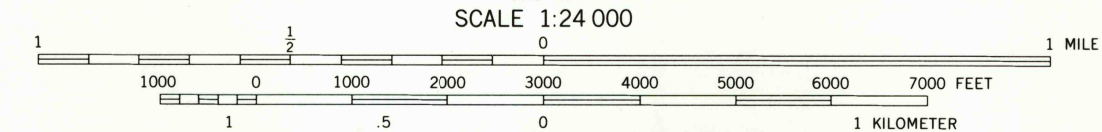
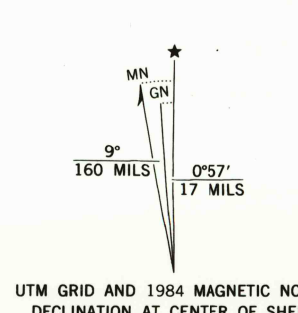


USGS MAP HISTORICAL
APR 17 1996
REC'D FILE COPY



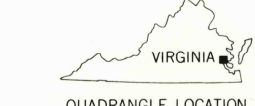
Mapped, edited, and published by the Geological Survey
in cooperation with Commonwealth of Virginia agencies
Control by USGS and NOS/NOAA
Topography by photogrammetric methods from aerial photographs
taken 1963. Field checked 1965. Revised from aerial photographs
taken 1978. Field checked 1982. Map edited 1984
Supersedes Army Map Service map dated 1957
Selected hydrographic data compiled from NOS charts 12241 (1979)
and 12248 (1982). This information is not intended for
navigational purposes
Polyconic projection. 10,000-foot grid ticks based on Virginia
coordinate system, south zone
1000-meter Universal Transverse Mercator grid, zone 18
1927 North American Datum
To place on the predicted North American Datum 1983
move the projection lines 1.1 meters south and
23 meters west as shown by dashed corner ticks
Red tint indicates areas in which only landmark buildings are shown
There may be private inholdings within the boundaries of
the National or State reservations shown on this map



CONTOUR INTERVAL 10 FEET
DOTTED LINES REPRESENT 5-FOOT CONTOURS
NATIONAL GEODETIC VERTICAL DATUM OF 1929
DEPTH CURVES AND SOUNDINGS IN FEET—DATUM IS MEAN LOW WATER
THE RELATIONSHIP BETWEEN THE TWO DATUMS IS VARIABLE
SHORELINE SHOWN REPRESENTS THE APPROXIMATE LINE OF MEAN HIGH WATER
THE MEAN RANGE OF TIDE IS APPROXIMATELY 2.4 FEET

THIS MAP COMPLIES WITH NATIONAL MAP ACCURACY STANDARDS
FOR SALE BY U.S. GEOLOGICAL SURVEY, DENVER, COLORADO 80225
OR RESTON, VIRGINIA 22092
A FOLDER DESCRIBING TOPOGRAPHIC MAPS AND SYMBOLS IS AVAILABLE ON REQUEST

ROAD CLASSIFICATION
Primary highway, hard surface
Secondary highway, hard surface
Unimproved road
Interstate Route
U.S. Route
State Route
Light-duty road, hard or improved surface
Unimproved road



YORKTOWN, VA.
37076-85-1024
1984

DMA 5658 II NE—SERIES V834

