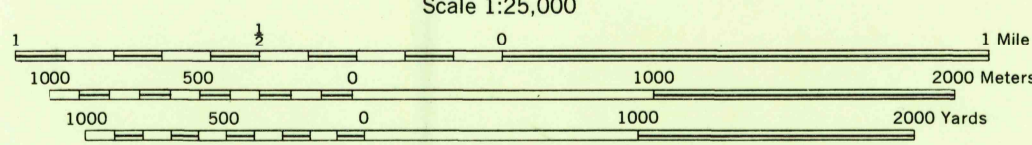


V834 Edition 4-AMS (First Printing, 1-56)

Prepared by the Army Map Service (AMNS), Corps of Engineers, U. S. Army, Washington, D. C. Compiled in 1954 by photogrammetric methods. Aerial photography March 1952. Horizontal and vertical control by USCG&S, USGS, and CE. Photography field annotated 1952. This map complies with the national standard map accuracy requirements.



CONTOUR INTERVAL 10 FEET
VERTICAL DATUM: SEA LEVEL DATUM OF 1929
TRANSVERSE MERCATOR PROJECTION
HORIZONTAL DATUM: 1927 NORTH AMERICAN DATUM

BLACK NUMBERED LINES INDICATE THE 1,000 METER UNIVERSAL TRANSVERSE MERCATOR GRID. ZONE IS THE LAST THREE DIGITS OF THE GRID NUMBERS ARE OMITTED.

USERS NOTING ERRORS OR OMISSIONS ON THIS MAP AND DESIRING TO MAKE REVISIONS AND FORWARD DIRECTLY TO COMMANDING OFFICER, ARMY MAP SERVICE, WASHINGTON, D. C. MAPS SO FORWARDED WILL BE RETURNED OR REPLACED IF DESIRED.

GRID ZONE DESIGNATION	TO GIVE A STANDARD REFERENCE ON THIS SHEET TO NEAREST 100 METERS
18S	
300	
400	
TS	
TR	

SAMPLE POINT: MT ZION CHURCH

- Locate first VERTICAL grid line to LEFT of point and read LARGEST figure labeling the line either in the top or bottom margin, or on the line itself.
- Locate first HORIZONTAL grid line BELOW point and read LARGEST figure labeling the line either in the left or right margin, or on the line itself.
- Estimate tenths from grid line to point.

SAMPLE REFERENCE:

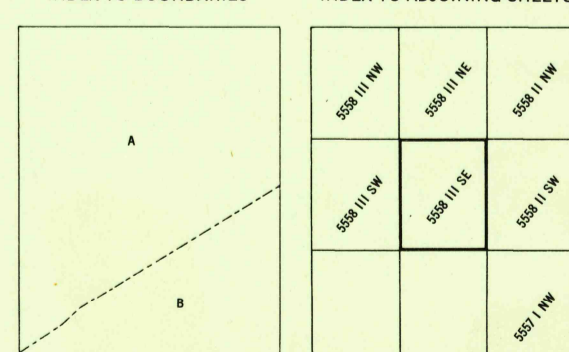
If reporting beyond 100,000 meters or if sheet bears an overlapping grid, prefix 100,000 Meter Square identification, as:

If reporting beyond 10° in any direction, prefix Grid Zone Designation, as:

LEGEND	
ROAD DATA 1952	
Hard surface, heavy duty road, four or more lanes wide	4 LANE LINES
Hard surface, heavy duty road, two lanes wide; Three lanes wide	2 LANE LINES
Hard surface, medium duty road, four or more lanes wide	4 LANE LINES
Hard surface, medium duty road, two lanes wide; Three lanes wide	2 LANE LINES
Unimproved dirt road, street	-----
Trail	-----
Route markers: Federal; State	① ②
Barns, sheds, greenhouses, stadiums, etc.	BM x 792
Bench mark, monument	BM x 431
Bench mark, non-monumented	BM x 431
Spot elevations in feet: Checked; Unchecked	* 168 * 168
Light, lighthouse; Windmill; wind pump; Water mill	x 168
Woods or brushwood	■
Vineyard; Orchard	■
Intermittent lake	■
Intermittent stream; Dam	■
Marsh or swamp	■
Rapids; Falls	■
Large rapids; Large falls	■

PRINTED BY ARMY MAP SERVICE, CORPS OF ENGINEERS, 1-56, 600245

INDEX TO BOUNDARIES



A. Prince George County
B. Sussex County

Sheet 5558 III SE falls within NJ 18-7, V834, 1:250,000

HISTORICAL FILES

(DO NOT REMOVE)

LEES MILL POND, VIRGINIA

FILE COPY
NOT TO BE REMOVED FROM FILES