

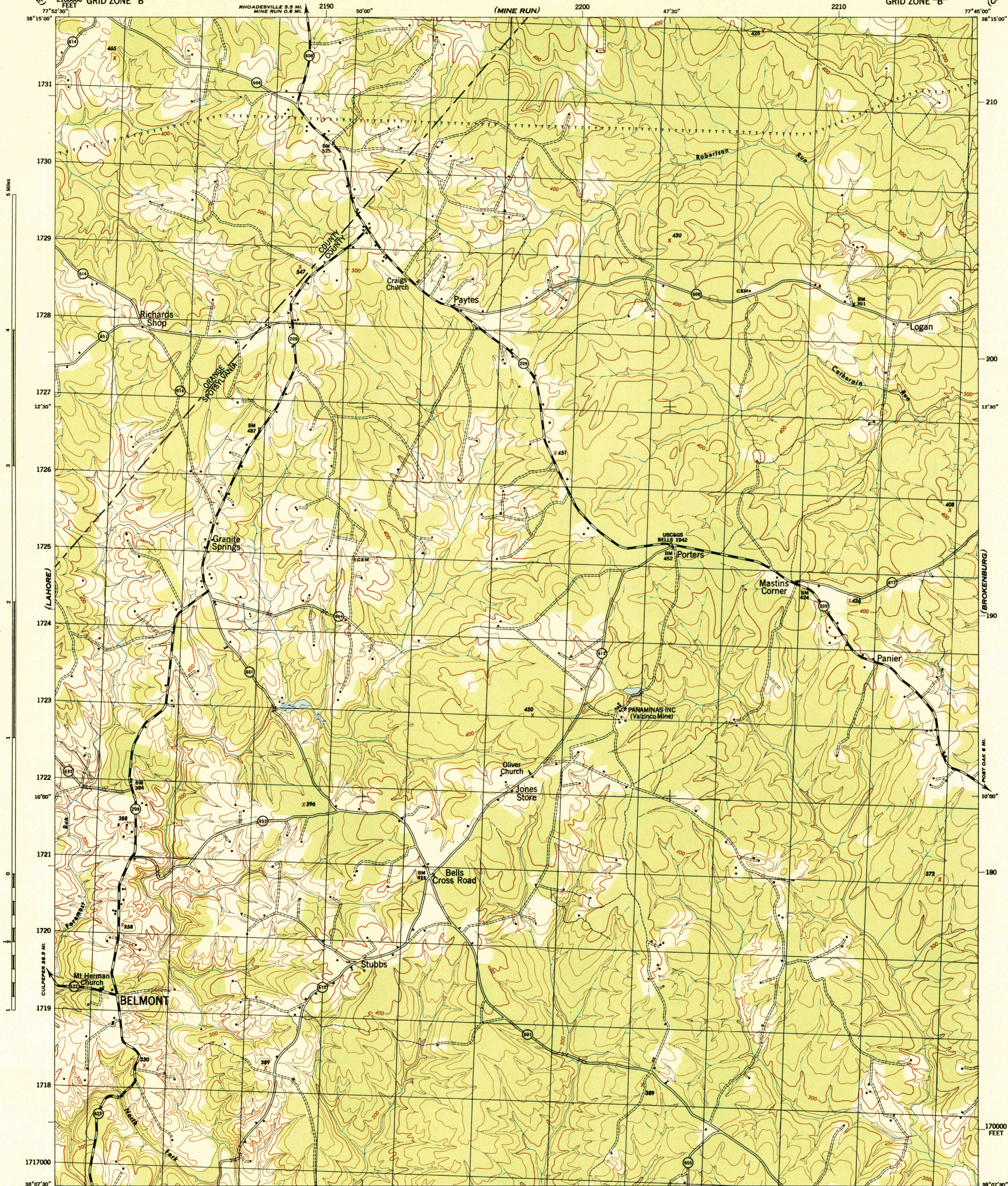
(UNIONVILLE)

VIRGINIA  
BELMONT QUADRANGLE  
2180000 FEET  
GRID ZONE "B"

WAR DEPARTMENT  
CORPS OF ENGINEERS, U. S. ARMY

VIRGINIA  
BELMONT QUADRANGLE  
GRID ZONE "B"

(CHANCELLORSVILLE)



(MINERAL)

Prepared by U. S. Department of Agriculture, Soil Conservation Service, under the direction of the Chief of Engineers, U. S. Army, 1942. Horizontal and vertical control by U. S. Coast and Geodetic Survey, U. S. Geological Survey, and S. C. S., 1942. Topography by S. C. S., 1942. Wide-angle photography for S. C. S., 1942. Virginia system (North Zone) of plane coordinates indicated by 3-dash marginal ticks. Polyconic projection, North American datum, 1927.

**ROAD CLASSIFICATION**

Dependable hard-surface, heavy-duty road	Loose-surface graded, 60' weather road	U. S. Route (717)
Secondary hard-surface, all-weather road	Unimproved road	State Route (209)
More than two lanes indicated by note along road with tick at point of change	3 LANE 4 LANE	

Scale 1:31680

1000 500 0 1000 2000 Yards

CONTOUR INTERVAL 20 FEET  
DATUM IS MEAN SEA LEVEL

ONE THOUSAND YARD GRID COMPUTED FROM GRID SYSTEM FOR PROGRESSIVE MAPS IN THE U. S. ZONE B, U. S. C. & G. S. SPECIAL PUBLICATION NO. 89. THE LAST THREE DIGITS OF THE GRID NUMBERS ARE OMITTED.

NOTE: OFFICERS USING THIS MAP WILL WANT HEREON CORRECTORS AND ADDITIONS WHICH COME TO THEIR ATTENTION AND MAIL DIRECT TO "THE CHIEF OF ENGINEERS, WASHINGTON, D. C."

APPROXIMATE MEAN DECLINATION 1942  
ANNUAL MAGNETIC CHANGE 30" DECREASE

BELMONT, VA.  
N3807.5-W77457.5

USGS  
Historical File  
Topographic Division

(PARTLOW)