

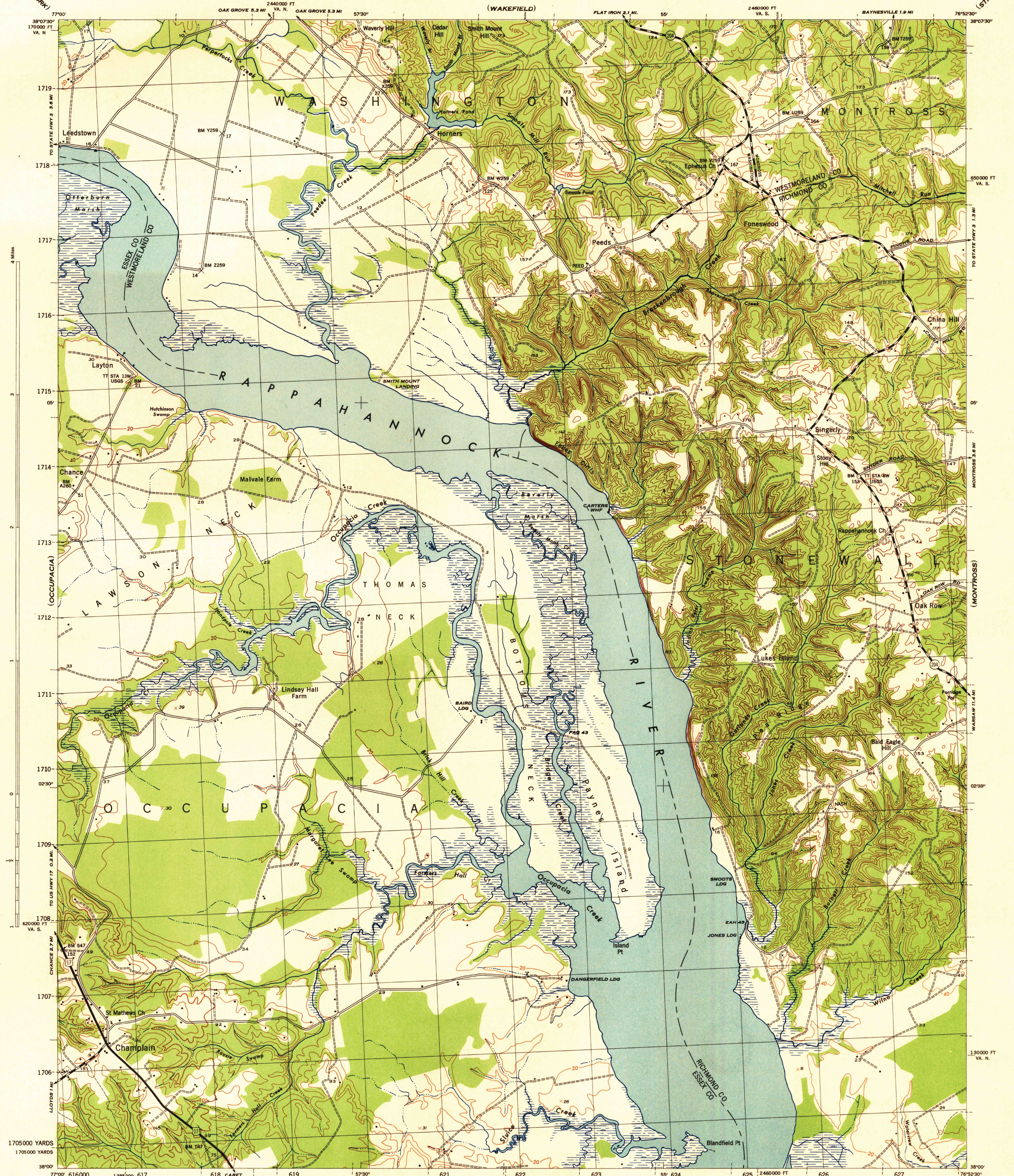
(ROLLINS FORD)

VIRGINIA
SCALE 1:31680

WAR DEPARTMENT
CORPS OF ENGINEERS, U. S. ARMY

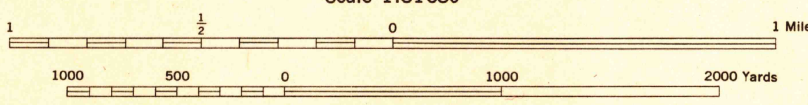
CHAMPLAIN QUADRANGLE
7½-MINUTE SERIES

(STRATFORD)



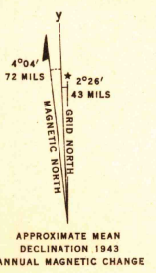
(CAUTHORVILLE)

War Department mapping project.
Under direction of the Chief of Engineers.
Control by the U. S. Coast and Geodetic Survey.
Planimetry compiled from all photographs by U. S. Coast and Geodetic Survey.
Planimetry topography and field edit by U. S. Coast and Geodetic Survey, 1943.
Polyconic projection, North American datum of 1927.
This map complies with the national standard map accuracy requirements.



CONTOUR INTERVAL 20 FEET
DATUM IS MEAN SEA LEVEL

ONE THOUSAND YARD GRID COMPUTED FROM "GRID SYSTEM FOR PROGRESSIVE MAPS IN THE U. S." ZONE A, U. S. C. & G. S. SPECIAL PUBLICATION NO. 59
THE "1" GRID IS INDICATED BY DASHED TICKS
THE LAST THREE DIGITS OF THE GRID NUMBERS ARE OMITTED
THE STATE GRID IS INDICATED AT 10,000 FOOT INTERVALS
NOTE: OFFICERS USING THIS MAP WILL MARK PERSON CORRECTIONS AND ADDITIONS WHICH COME TO THEIR ATTENTION AND MAIL DIRECT TO "THE CHIEF OF ENGINEERS, WASHINGTON, D. C."



REPRODUCED BY THE U. S. COAST AND GEODETIC SURVEY (W & H) 1943
ANS NO. 102751
Recoverable horizontal control stations of less than third order accuracy are shown by circles.

ROAD CLASSIFICATION 1943
Dependable hard-surface, heavy-duty road. U. S. route 74
Loose surface graded, dry-weather road.
Secondary, hard-surface, all-weather road. Dirt road. State route 28
More than two lanes indicated by note along road with tick at point of change. 3 LANE 4 LANE

CHAMPLAIN, VA.
N3900-W7652.5/7.5

USCGO
Historical File
Topographic Division

RETURN TO:
USCGO HISTORICAL MAP ARCHIVES

(TAPPANNOCK)