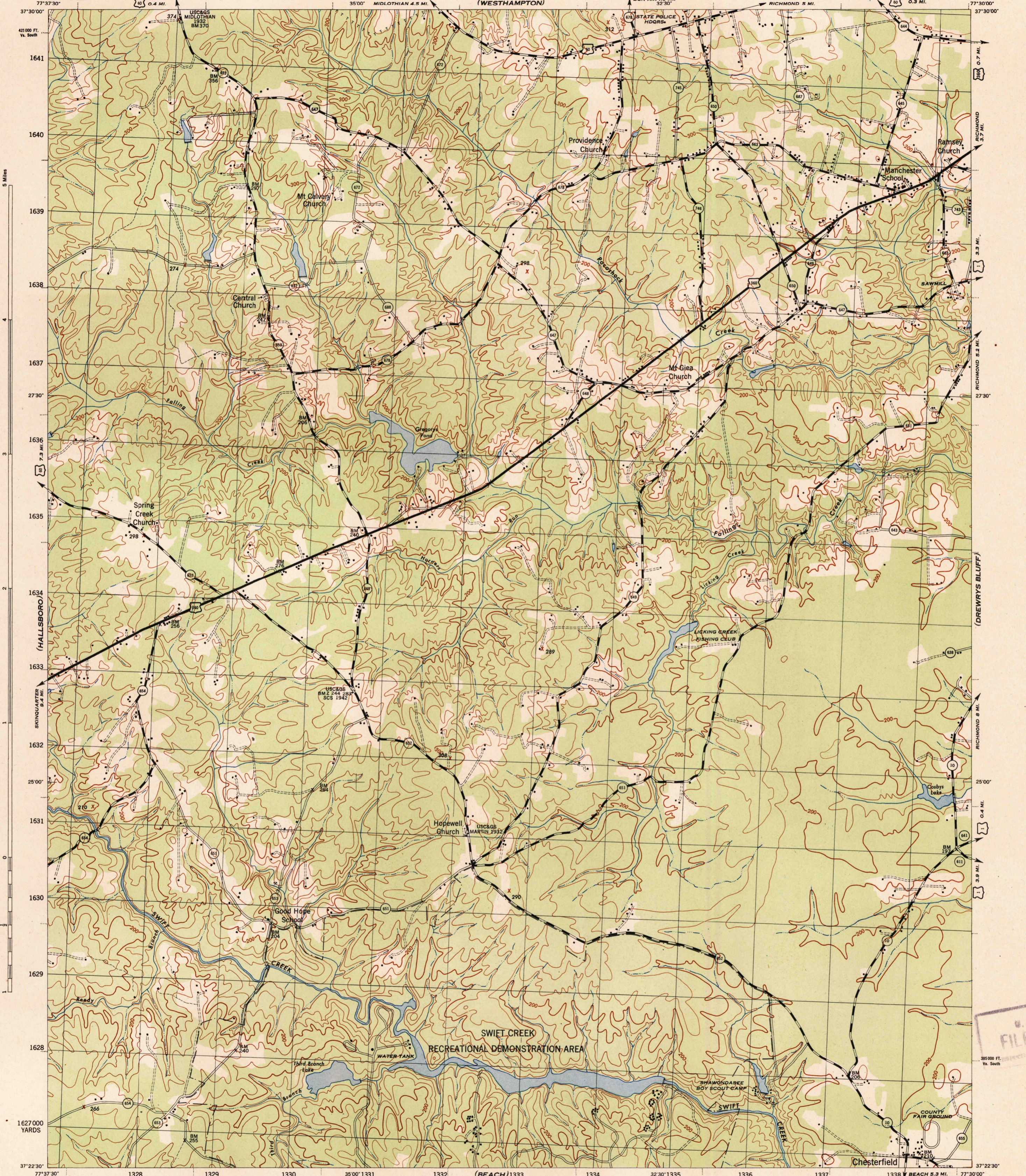


VIRGINIA 1:31,680
CHESTERFIELD COUNTY

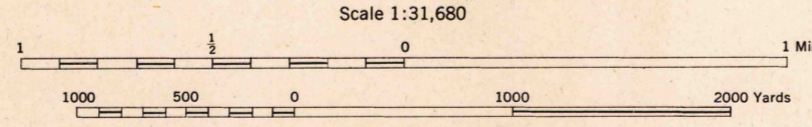
WAR DEPARTMENT
CORPS OF ENGINEERS, U. S. ARMY

CHESTERFIELD QUADRANGLE
7.5 MINUTE SERIES



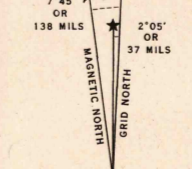
Prepared by U. S. Department of Agriculture, Soil Conservation Service,
under the direction of the Chief of Engineers, U. S. Army, 1943.
Horizontal and vertical control by U. S. Coast and Geodetic Survey, U. S. Geological Survey, and S. C. S., 1943.
Topography by S. C. S., 1943. Wide-angle photography for S. C. S., 1942.
Polyconic projection, North American datum, 1927.
This map complies with the National standard map accuracy requirements.

ROAD CLASSIFICATION 1943
Dependable hard-surface, heavy-duty road ————— U. S. Route (360)
Loose-surface graded, dry-weather road ————
Secondary, hard-surface, all-weather road ———— State Route (638)
Unimproved road - - - - -
More than two lanes indicated by note along road with tick at point of change **3 LANE 1/2 LANE**



Scale 1:31,680
CONTOUR INTERVAL 20 FEET
DATUM IS MEAN SEA LEVEL

ONE THOUSAND YARD GRID COMPUTED FROM "GRID SYSTEM FOR PROGRESSIVE MAPS
IN THE U. S. ZONE B, U. S. C. & G. S. SPECIAL PUBLICATION NO. 99
THE LAST THREE DIGITS OF THE GRID NUMBERS ARE OMITTED
VIRGINIA STATE GRID, SOUTH ZONE, IS INDICATED BY DOTTED TICKS OUTSIDE THE NEAT LINE AT 5000 FOOT INTERVALS
NOTE: OFFICERS USING THIS MAP WILL MARK HEREON CORRECTIONS AND ADDITIONS WHICH COME
TO THEIR ATTENTION AND MAIL DIRECT TO THE CHIEF OF ENGINEERS, WASHINGTON, D. C."



APPROXIMATE MEAN
DECLINATION 1943
ANNUAL MAGNETIC CHANGE 30'
DECREASE

USGS
Historical File
Topographic Division

CHESTERFIELD, VA.
N3722.5-W7730/7.5

U. S. G. S.
FILE COPY

(BERMUDA HUNDRED)
1:62,360