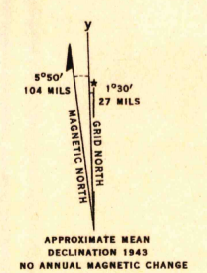
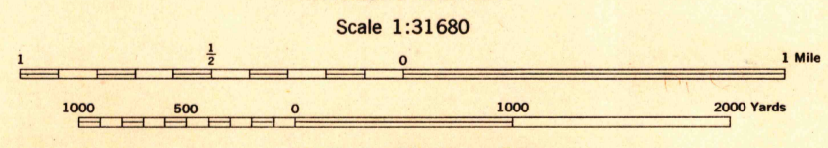


(POCOMOKE CITY)
620000 FT. VA. S.
2870000 FT. VA. S.
4 Miles
NEW CHURCH 1.8 MI.
(HALLWOOD)
DARK HALL 3.2 MI.
TEMPERNEVILLE 3.4 MI.
WISHARTVILLE 3.4 MI.
(WAPPSVILLE)

(BOXIRON)
38°00'
57°30'
55°
37°52'30"



War Department mapping project.
Under direction of the Chief of Engineers.
Control by the U. S. Coast and Geodetic Survey.
Planimetry compiled from air photographs by U. S. Coast and Geodetic Survey.
Planetable topography and field edit by U. S. Coast and Geodetic Survey, 1943.
Polyconic projection, North American datum of 1927.
This map complies with the national standard map accuracy requirements.



REPRODUCED BY THE U. S. COAST AND GEODETIC SURVEY, (W & H) 1943
ANS NO. 120737

Recoverable horizontal control stations of less than third order accuracy are shown by circles.

ROAD CLASSIFICATION 1943

Dependable hard-surface, heavy-duty road.	Loose-surface graded, dry-weather road.	U. S. route (74)
Secondary, hard-surface, all-weather road.	Dirt road.	State route (23)

More than two lanes indicated by note along road with tick at point of change. 3 LANE | 4 LANE

ONE THOUSAND YARD GRID COMPUTED FROM "GRID SYSTEM FOR PROGRESSIVE MAPS IN THE U. S." ZONE A, U. S. C. & G. S. SPECIAL PUBLICATION NO. 59
THE LAST THREE DIGITS OF THE GRID NUMBERS ARE OMITTED.
THE STATE GRIDS ARE INDICATED AT 10,000 FOOT INTERVALS.
NOTE: OFFICERS USING THIS MAP WILL MARK REVISION CORRECTIONS AND ADDITIONS WHICH COME TO THEIR ATTENTION AND MAIL DIRECT TO "THE CHIEF OF ENGINEERS, WASHINGTON, D. C."

CHINCOTEAGUE WEST, VA.
N3752.5-W7522.5/7.5

USGS
Historical
Topographic Division