

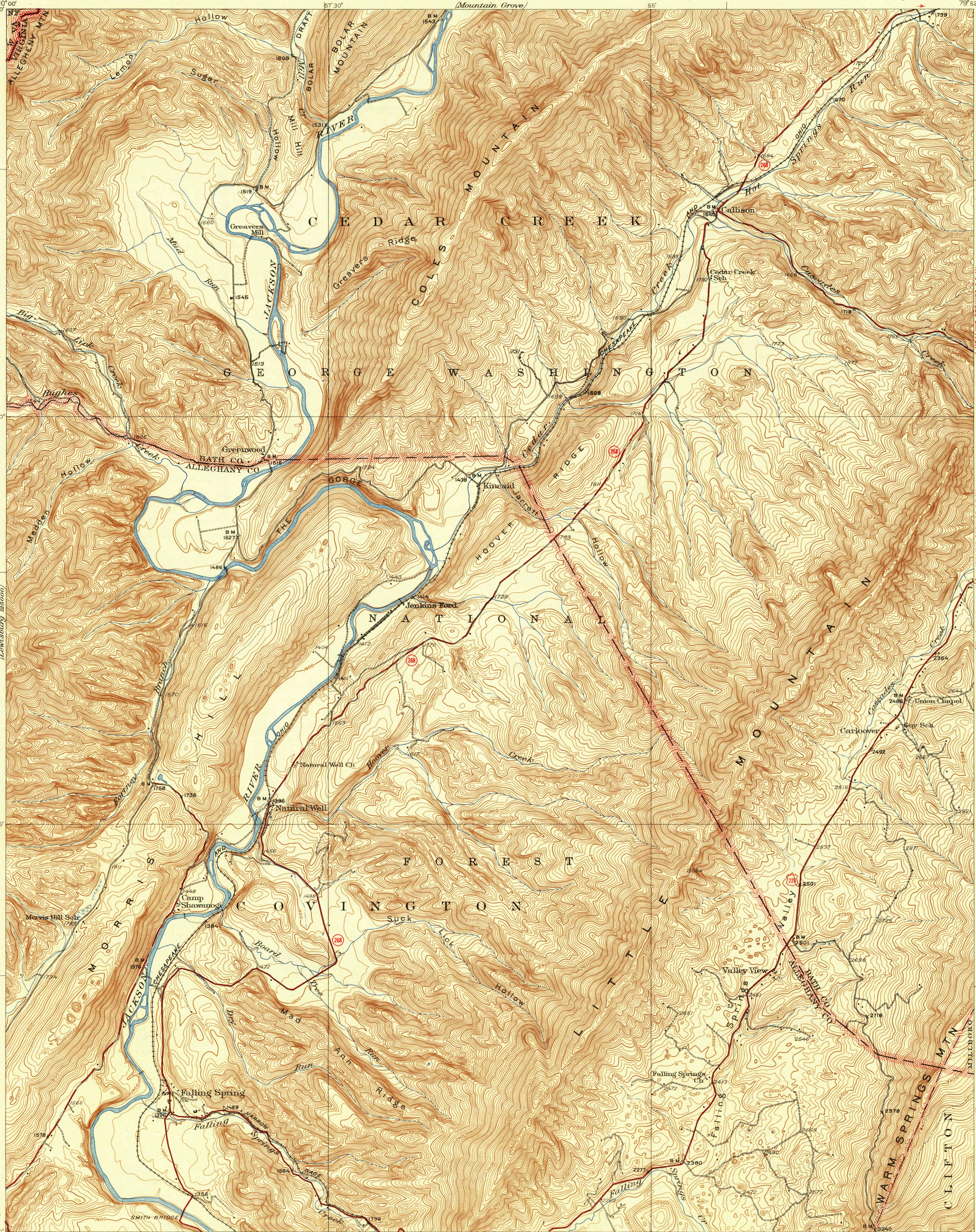
(Meridian)  
22500

UNITED STATES  
DEPARTMENT OF THE INTERIOR  
GEOLOGICAL SURVEY

STATE OF VIRGINIA  
REPRESENTED BY THE  
CONSERVATION COMMISSION  
GEOLOGICAL SURVEY

WARM SPRING (JUNC. U. S. NO. 220) 9 MI.  
JUNC. STATE NO. 39 6.2 MI.  
VIRGINIA-WEST VIRGINIA  
FALLING SPRING QUADRANGLE

(Warm Springs Run)



(Lewisburg 22500)

Topography by R.A. Kiger and S.N. Stoner  
Surveyed in 1928-1929  
JUNC. U. S. NO. 220 4 MI.  
COVINGTON 7.4 MI.

JUNC. U. S. NO. 220 0.5 MI.  
COVINGTON 7 MI.

(Rockbridge 22500) 220  
COVINGTON 7.7 MI.  
ROANOKE 56 MI.

Scale 31680  
1 Mile  
5000 Feet  
1 Kilometer

Polyconic projection. North American datum  
5000 yard grid based upon U. S. zone system, B

U. S. G. S.  
FILE COPY  
Division and Editing

(Lewisburg 22500)

Approximate mean  
declination, 1929

Contour interval 20 feet  
Datum is mean sea level

Historical File  
Topographic Division

ROUTES USUALLY TRAVELED  
HARD IMPERVIOUS SURFACES  
OTHER SURFACE IMPROVEMENTS  
U. S. ROUTE 1944  
STATE ROUTE

FALLING SPRING, VA-W. VA. AUG 24 1944  
Edition of 1932  
reprinted 1944  
N 37525-W 79525/15

(Rockbridge 22500)