

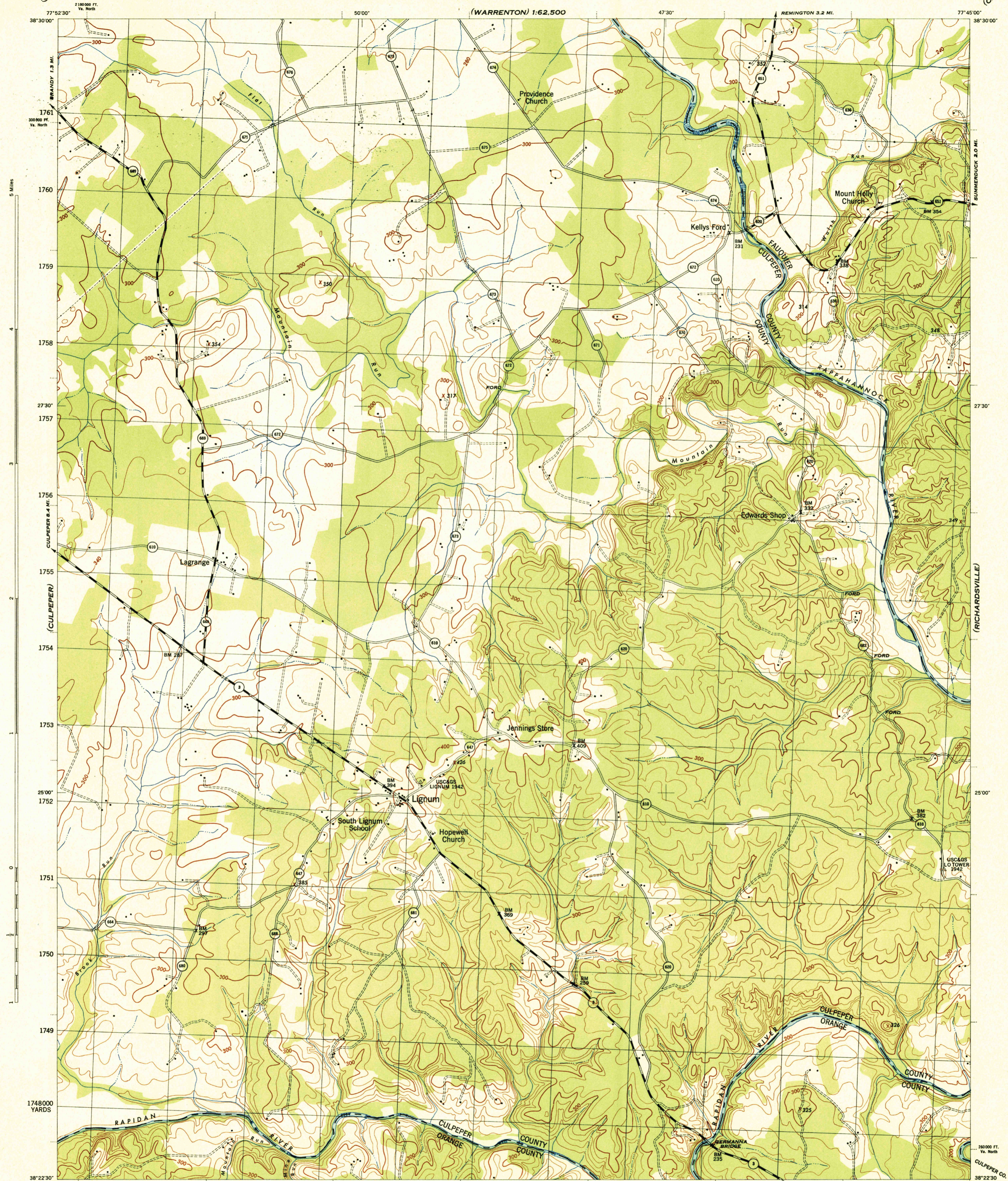
(WARRENTON) 1:62,500

VIRGINIA 1:31,680

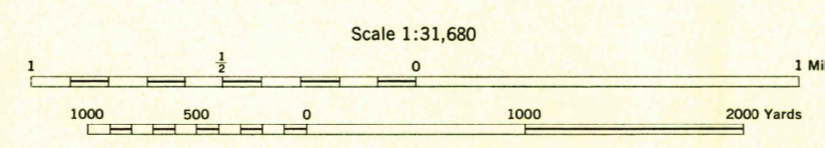
WAR DEPARTMENT
CORPS OF ENGINEERS, U. S. ARMY

GERMANNA BRIDGE QUADRANGLE
7.5 MINUTE SERIES

(CATLETT) 1:62,500



Prepared by U. S. Department of Agriculture, Soil Conservation Service, under the direction of the Chief of Engineers, U. S. Army, 1943. Horizontal and vertical control by U. S. Coast and Geodetic Survey, U. S. Geological Survey, and S. C. S., 1943. Topography by S. C. S., 1943. Wide-angle photography for S. C. S., 1942. Polyconic projection, North American datum, 1927. This map complies with the National standard map accuracy requirements.



ROAD CLASSIFICATION 1943
 ———— Loose-surface graded, dry-weather road
 ———— U. S. Route 15
 ———— Secondary, hard surface, all-weather road
 ———— Unimproved road
 ———— State Route 3
 ———— 3 LANE, 4 LANE
 More than two lanes indicated by note along road with tick at point of change

CONTOUR INTERVAL 20 FEET
 DATUM IS MEAN SEA LEVEL
 ONE THOUSAND YARD GRID COMPUTED FROM "GRID SYSTEM FOR PROGRESSIVE MAPS IN THE U. S." ZONE B, U. S. C. & G. S. SPECIAL PUBLICATION NO. 59. THE LAST THREE DIGITS OF THE GRID NUMBERS ARE OMITTED.
 VIRGINIA STATE GRID, NORTH ZONE, IS INDICATED BY DOTTED TICKS OUTSIDE THE NEAT LINE AT 5000 FOOT INTERVALS.
 NOTE: OFFICERS USING THIS MAP WILL MARK REVISION CORRECTIONS AND ADDITIONS WHICH COME TO THEIR ATTENTION AND MAIL DIRECT TO "THE CHIEF OF ENGINEERS, WASHINGTON, D. C."

U. S. ARMY
FILE COPY
 Inspection and Logging

(UNIONVILLE)

(CHANCELLORSVILLE)

USGS
 Historical File
 Topographic Division

GERMANNA BRIDGE, VA.
 N3822.5-W7745/7.5