

VIRGINIA  
GUINEA QUADRANGLE

WAR DEPARTMENT  
CORPS OF ENGINEERS, U. S. ARMY

VIRGINIA  
GUINEA QUADRANGLE

GRID ZONE "B"  
2290000 FEET

(STAFFORD) 1:62500

GRID ZONE "B"  
2320

(STAFFORD)  
1:62500

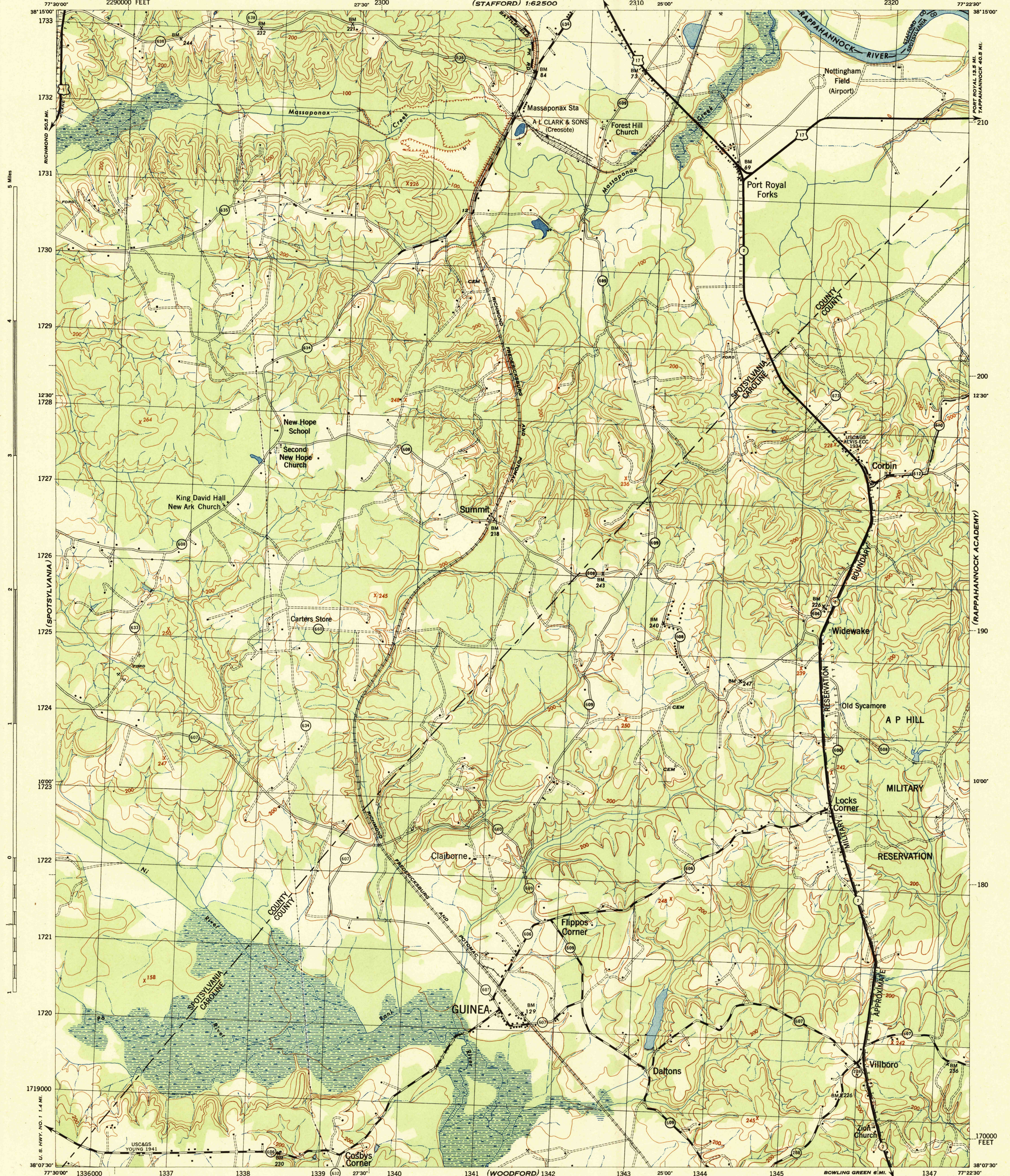
Advance edition  
Subject to correction

(SALEM CHURCH)

(PORT ROYAL 13.8 MI.  
TAPPANNOCK 45.8 MI.)

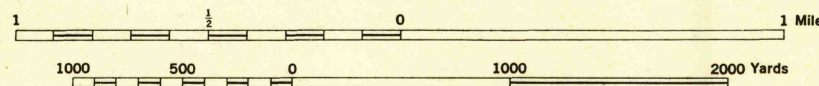
(RAPPANNOCK ACADEMY)

(BOWLING GREEN)



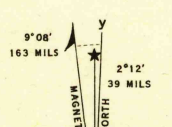
Prepared by U. S. Department of Agriculture, Soil Conservation Service,  
under the direction of the Chief of Engineers, U. S. Army, 1942.  
Horizontal and vertical control by U. S. Coast and Geodetic Survey, U. S. Geological Survey, and S. C. S., 1942.  
Topography by S. C. S., 1942. Wide-angle photography for S. C. S., 1942.  
Virginia system (North Zone) of plane coordinates indicated by 3-dash marginal ticks.  
Polyconic projection, North American datum, 1927.

Scale 1:31680



CONTOUR INTERVAL 20 FEET  
DATUM IS MEAN SEA LEVEL

ONE THOUSAND YARD GRID COMPUTED FROM GRID SYSTEM FOR PROGRESSIVE MAPS  
IN THE U. S. ZONE B, U. S. C. & G. S. SPECIAL PUBLICATION NO. 59  
THE LAST THREE DIGITS OF THE GRID NUMBERS ARE OMITTED  
NOTE: OFFICERS USING THIS MAP WILL MARK HEREON CORRECTIONS AND ADDITIONS WHICH COME  
TO THEIR ATTENTION AND WILL DIRECT TO THE CHIEF OF ENGINEERS, WASHINGTON, D. C.



USGS  
Historical File  
Topographic Division

**ROAD CLASSIFICATION**

Dependable hard-surface, dry-weather road	Loose-surface graded, dry-weather road	U. S. Route
Secondary, hard-surface, all-weather road	Unimproved road	State Route
More than two lanes indicated by note along road with tick at point of change		3 LANE 4 LANE

GUINEA, VA.  
N3807.5-W7722.5/7.5

USGS  
FILE COPY  
Incorporation and Edition