

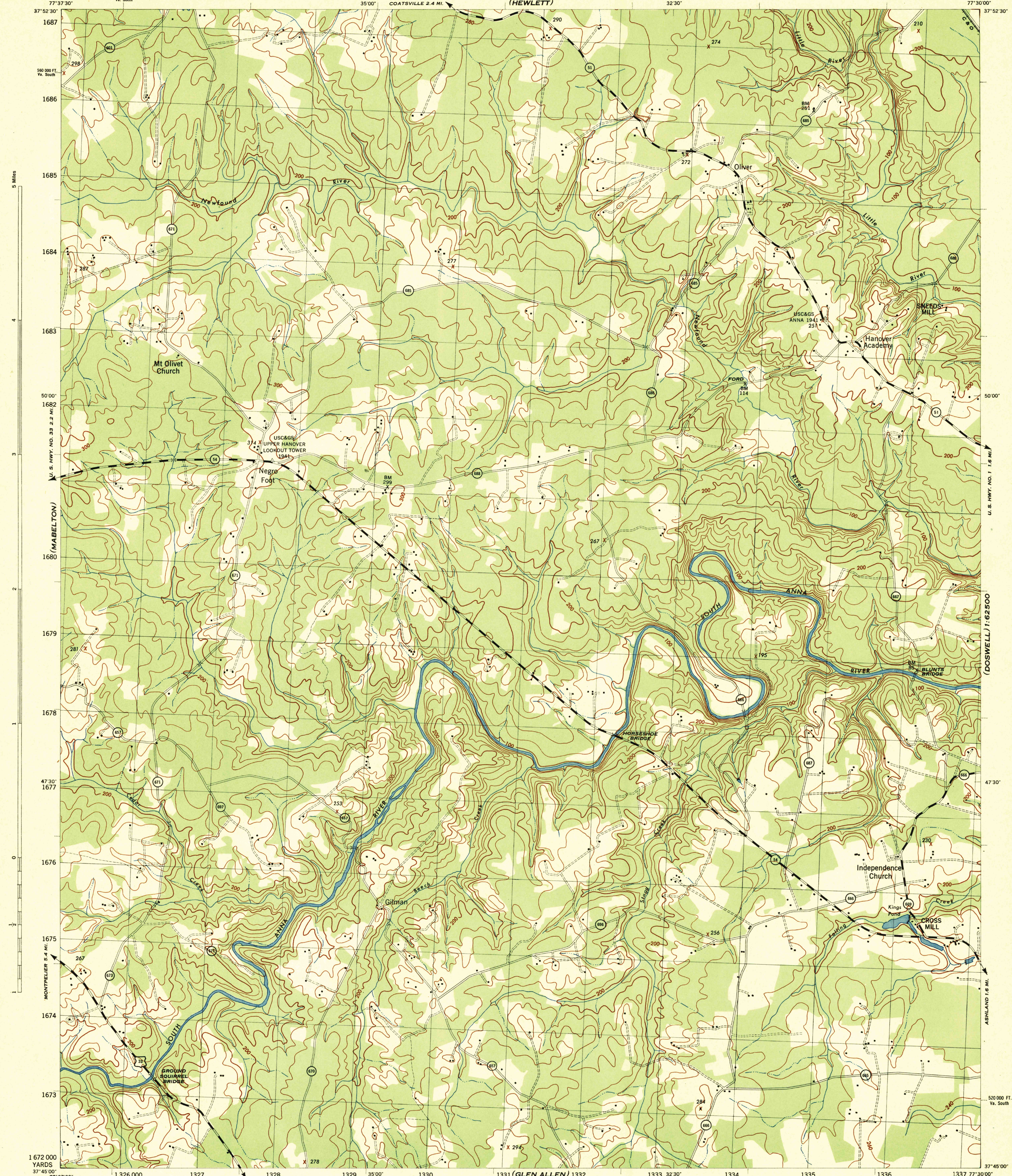
(BEAVERDAM)

VIRGINIA 1:31,680  
HANOVER COUNTY

WAR DEPARTMENT  
CORPS OF ENGINEERS, U. S. ARMY

HANOVER ACADEMY QUADRANGLE  
7.5 MINUTE SERIES

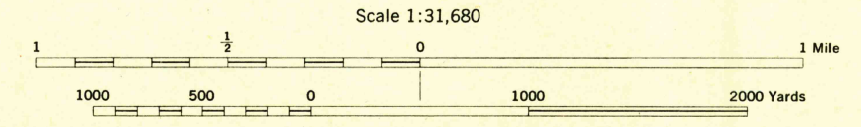
(DOSWELL)  
1:62,500



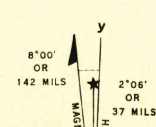
(JOHNSON'S SPRINGS)

Prepared by U. S. Department of Agriculture, Soil Conservation Service,  
under the direction of the Chief of Engineers, U. S. Army, 1943.  
Horizontal and vertical control by U. S. Coast and Geodetic Survey, U. S. Geological Survey, and S. C. S., 1942.  
Topography by S. C. S., 1943. Wide-angle photography for S. C. S., 1942.  
Polyconic projection, North American datum, 1927.  
This map complies with the National standard map accuracy requirements.

ROAD CLASSIFICATION 1943  
Dependable hard-surface, heavy-duty road. Loose-surface graded, dry-weather road. U. S. Route 39  
Secondary, hard-surface, all-weather road. Unimproved road. State Route 54  
More than two lanes indicated by note along road with tick at point of change. 3 LANE 4 LANE



Scale 1:31,680  
CONTOUR INTERVAL 20 FEET  
DATUM IS MEAN SEA LEVEL  
ONE THOUSAND YARD GRID COMPUTED FROM "GRID SYSTEM FOR PROGRESSIVE MAPS  
IN THE U. S. ZONE B. U. S. C. & G. S. SPECIAL PUBLICATION NO. 59  
THE LAST THREE DIGITS OF THE GRID NUMBERS ARE OMITTED  
VIRGINIA STATE GRID, SOUTH ZONE, IS INDICATED BY DOTTED TICKS OUTSIDE THE NEAT LINE AT 5000 FOOT INTERVALS  
NOTE: OFFICERS USING THIS MAP WILL MARK HEREON CORRECTIONS AND ADDITIONS WHICH COME  
TO THEIR ATTENTION AND MAIL DIRECT TO THE CHIEF OF ENGINEERS, WASHINGTON, D. C.



HISTORICAL FILES

(DO NOT REMOVE)

HANOVER ACADEMY, VA.  
N3745-W7730/7.5

RETURN TO:  
USGS AND HISTORICAL MAP ARCHIVES

(YELLOW TAVERN)