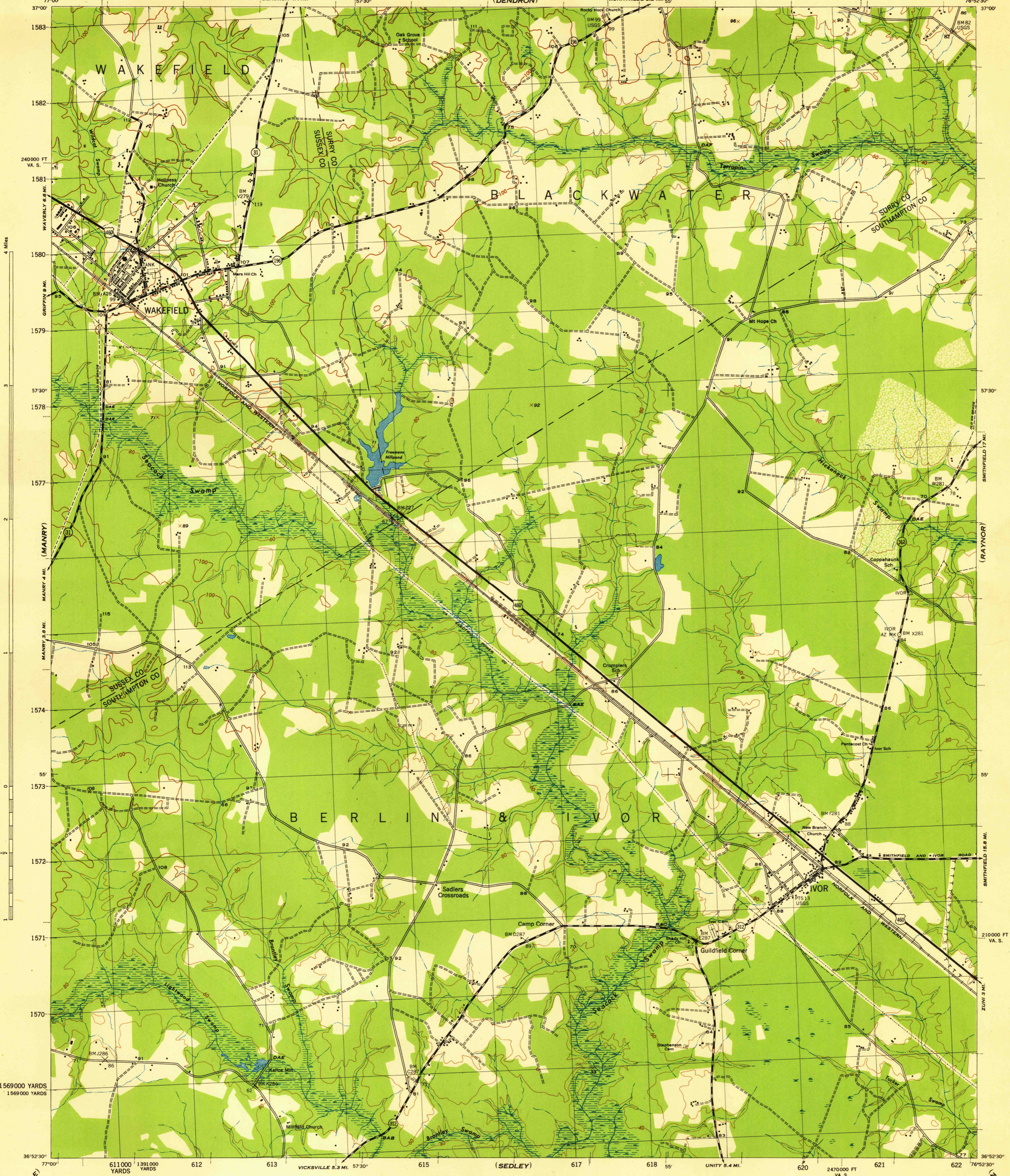


(WAVERLY)

(RUNNYMEDE)



(WICKSVILLE)

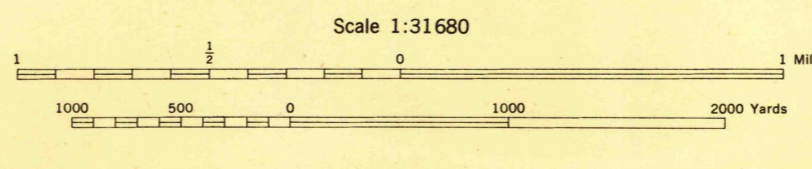
(ZUNI)

Maped by the U. S. Coast and Geodetic Survey under the direction of the Chief of Engineers, U. S. Army, 1943. Control by U.S.G.S. and U.S.C. & G.S. Planimetry by U.S.C. & G.S. from 1937 and 1942 air photographs. Planimetric topography and field edit by U.S.C. & G.S., 1944. Polyconic projection, North American datum of 1927. Recoverable horizontal control stations of less than third order accuracy are shown by circles.

**ROAD AND BRIDGE CLASSIFICATION 1944**

Dependable hard-surface, heavy-duty road. Loose-surface graded, dry-weather road. U. S. route State route Secondary, hard-surface, all-weather road. Dirt road. More than two lanes indicated by note along road with tick at point of change. **LANE 1 LANE**

THIS MAP COMPLIES WITH THE NATIONAL STANDARD MAP ACCURACY REQUIREMENTS



REPRODUCED BY THE U. S. COAST AND GEODETIC SURVEY, AMS NO. 121520

APPROXIMATE MEAN DECLINATION 1943 NO ANNUAL MAGNETIC CHANGE

**WOODLAND CLASSIFICATION**

Dense woodland	Dense Brush
Scattered brush and trees	Orchard
Marsh or swamp	Low ground, intermittently flooded

**HISTORICAL FILES**  
(DO NOT REMOVE)

IVOR, VA.  
N3652.5-W7652.5/7.5  
EDITION OF 1945

RETURN TO:  
USGS AND HISTORICAL MAP ARCHIVES