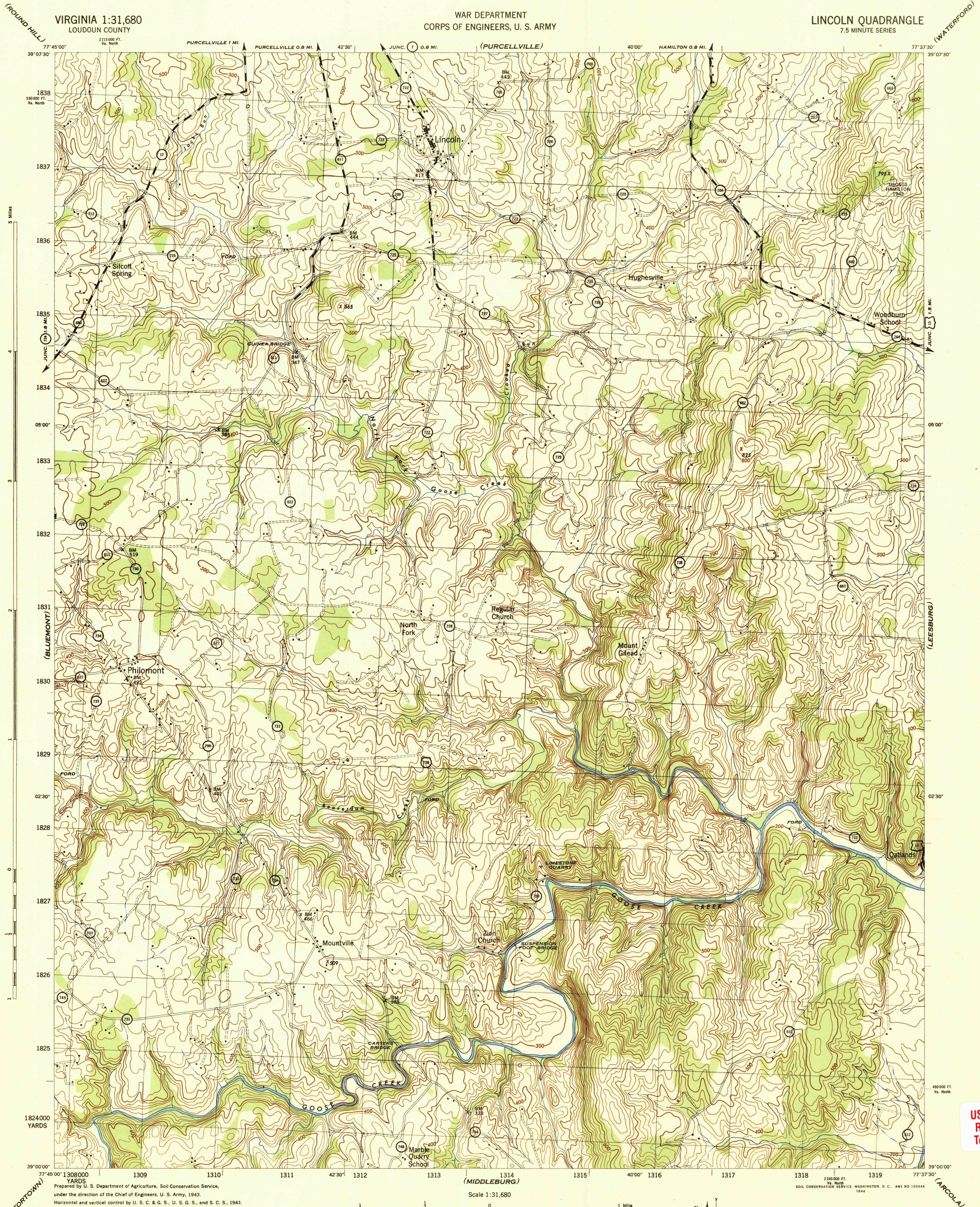


VIRGINIA 1:31,680
LOUDOUN COUNTY

WAR DEPARTMENT
CORPS OF ENGINEERS, U. S. ARMY

LINCOLN QUADRANGLE
7.5 MINUTE SERIES



Prepared by U. S. Department of Agriculture, Soil Conservation Service,
under the direction of the Chief of Engineers, U. S. Army, 1943.
Horizontal and vertical control by U. S. C. & G. S., U. S. G. S., and S. C. S., 1942.
Topography by S. C. S., 1943. Wide-angle photography for S. C. S., 1942.
Polyconic projection, North American datum, 1927.
This map complies with the National standard map accuracy requirements.

ROAD CLASSIFICATION 1943
Dependable hard-surface, heavy-duty road ——— U. S. Route 15
Loose-surface, graded, dry weather road ——— U. S. Route 11
Secondary, hard-surface, all-weather road ——— State Route 11
Dirt road ———
More than two lanes indicated by note along road with tick at point of change ——— 3 LANE 4 LANE

Scale 1:31,680
CONTOUR INTERVAL 20 FEET
DATUM IS MEAN SEA LEVEL
ONE THOUSAND YARD GRID COMPUTED FROM "GRID SYSTEM FOR PROGRESSIVE MAPS
IN THE U. S. S. C. & G. S. SPECIAL PUBLICATION NO. 59
THE LAST THREE DIGITS OF THE GRID NUMBERS ARE OMITTED
VIRGINIA STATE GRID, NORTH ZONE, IS INDICATED BY DOTTED TICKS OUTSIDE THE NEAT LINE AT 8000 FOOT INTERVALS
NOTE: OFFICERS USING THIS MAP WILL MAKE NECESSARY CORRECTIONS AND ADDITIONS WHICH COME
TO THEIR ATTENTION AND MAIL DIRECT TO THE CHIEF OF ENGINEERS, WASHINGTON, D. C.

APPROXIMATE MEAN
DECLINATION 1943
ANNUAL MAGNETIC CHANGE 30'
DECREASE

USGS
Historical File
Topographic Division

LINCOLN VA.
N3900-W7737.5/7.5

U. S. G. S.
FILE COPY
Inspection and Editing.

USGS LIBRARY - RESTON
3 1818 00512301 1

USGS Library
Reston, VA.
Topo Archive